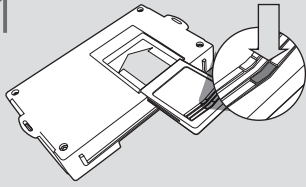


CARTRIDGE INSTALLATION

1



Slide cartridge into unit. Notice button under LED.

2

Ready for Module Programming Procedure.

MODULE PROGRAMMING PROCEDURE

1



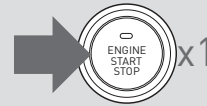
Push start button twice [2x] to ON position.

2



Wait, LED will turn solid BLUE for 2 seconds.

3



Push start button once [1x] to OFF position.

4

Module Programming Procedure completed.

PUSH TO START VEHICLE TAKE OVER PROCEDURE - TO THE VEHICLE OWNER

NOTE

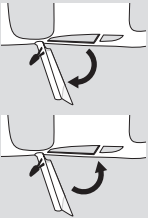
- I This procedure is to be followed during remote starter runtime prior to entering vehicle.
- II All vehicle doors must be closed.

1



Press UNLOCK on after-market remote or OEM fob.

2



Open vehicle door.

Enter vehicle WITH THE OEM FOB.

Close vehicle door.

3



OR

Wait for the LED indicator of the push button to be in the ON position.

OR

Wait for the ORANGE LED indicator of the push button to turn on.

4



Press and release BRAKE pedal.

5



It is safe to select gear ONLY AFTER LED indicator is in ON position.

6

Push to Start vehicle take over procedure completed.



Failure to follow procedure may result in vehicle displaying CHECK ENGINE or TIRE PRESSURE error messages.

