

Make	Model	Year	Install	IGN	Lights	BCM	POC	I/O Changes
DL-NI3 Infiniti	QX60 Intelli-Key PTS AT	2014-20	Type 1	YES	Park / Auto POC 1 Hazard1/2	BIC	See note	Green White/Blue None/ACC

**Install Type 1** requires **BLADE-AL(DL)-NI3** firmware, flash module and update the controller firmware before installing.

**CAN:** The NSP3 harness does not require any additional connections or special configuration of the harness for CAN data connections, the NI3 CAN connections are hardwired between the **black 20-pin BLADE** and **black 40-pin BCM** connectors.

**Lights:** Visual status confirmations and diagnostic information are provided via hazard lights when using the NSP3 harness. The controller **POC1** output must be configured for one of the following settings (depending on switch type):

- \* Hazard light [ 30 ] (*momentary hazard switch*)
- \* Hazard light 2 [ 23 ] (*latching hazard switch*)

**POC Configuration:**

**CMX:** POC2 - 2nd START [ 2 ]  
POC3 - 2nd IGN [ 3 ]

**CM9:** POC3 - (-) START  
POC4 - (-) IGNITION

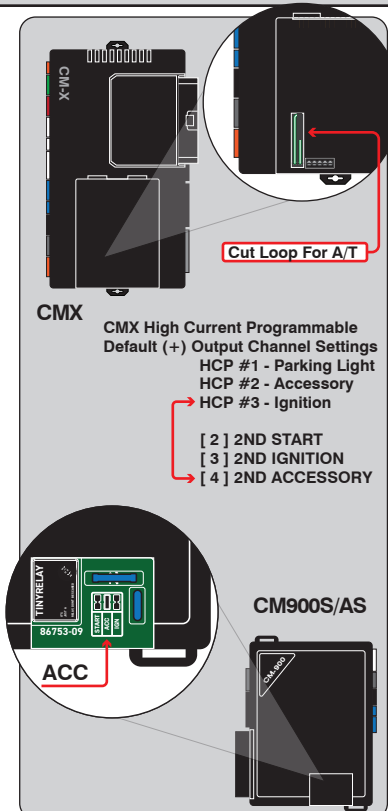
**I/O Changes:** Type 1 requires configuring the CN1 blue wire for ACC output, controller specific settings are listed on the next page.

### Vehicle Damage Warning:

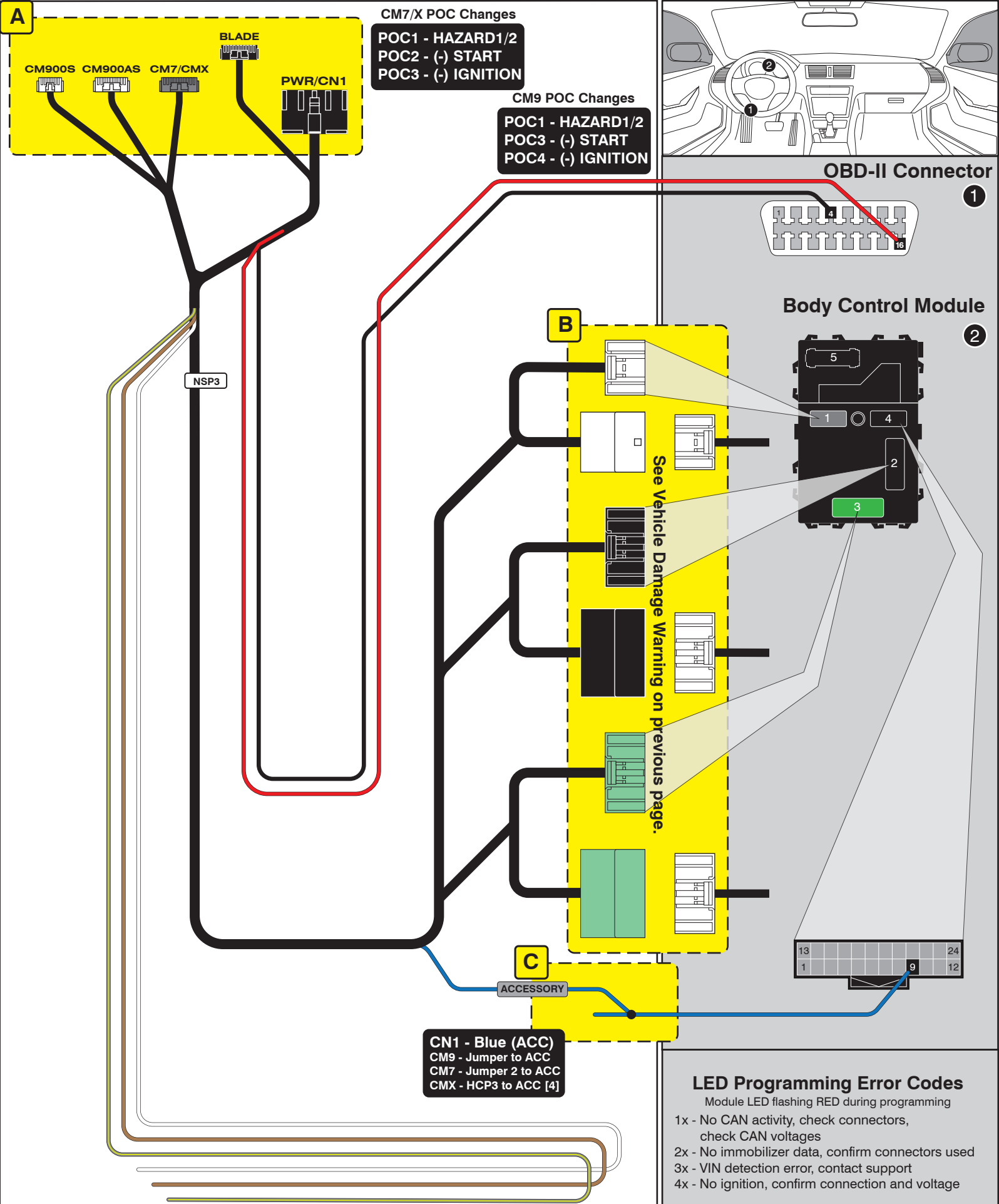
*Caution should be taken to avoid mixing up the BCM connectors, vehicle damage will result if the connectors are positioned improperly. It is advised that you make the BCM connections one at a time, confirming that each T-harness connection is at the correct BCM position before proceeding to the next connection, attempting to program, or attempting to remote start.*

## FTI-NSP3: Installation and Configuration Notes

- A** REQUIRED CONNECTIONS - SECURE UNUSED I/O CONNECTORS
- B** REQUIRED CONNECTIONS - SEE WARNING ABOVE
- C** REQUIRED CONNECTION

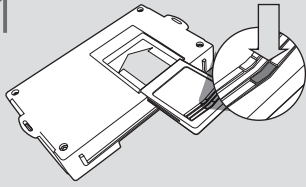


FEATURE COVERAGE																			
IMMOBILIZER DATA	PRIORITY UNLOCK	DOOR LOCK	DOOR UNLOCK	ARM OEM ALARM	DISARM OEM ALARM	TRUNK/HATCH RELEASE	POWER LIFTGATE		HOOD STATUS	DOOR STATUS	TRUNK STATUS		BRAKE STATUS	E-BRAKE STATUS	TACH OUTPUT		SECURE TAKEOVER		HAZARD LIGHTS



## CARTRIDGE INSTALLATION

1



Slide cartridge into unit. Notice button under LED.

2

Ready for Module Programming Procedure.

## MODULE PROGRAMMING PROCEDURE

1



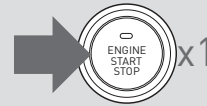
Push start button twice [2x] to ON position.

2



Wait, LED will turn solid BLUE for 2 seconds.

3



Push start button once [1x] to OFF position.

4

Module Programming Procedure completed.

## PUSH TO START VEHICLE TAKE OVER PROCEDURE - TO THE VEHICLE OWNER

### NOTE

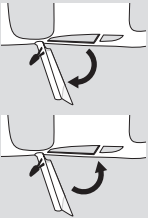
- I This procedure is to be followed during remote starter runtime prior to entering vehicle.
- II All vehicle doors must be closed.

1



Press UNLOCK on after-market remote or OEM fob.

2



Open vehicle door.

Enter vehicle WITH THE OEM FOB.

Close vehicle door.

3



OR

Wait for the LED indicator of the push button to be in the ON position.

OR

Wait for the ORANGE LED indicator of the push button to turn on.

4



Press and release BRAKE pedal.

5



It is safe to select gear ONLY AFTER LED indicator is in ON position.

6

Push to Start vehicle take over procedure completed.



Failure to follow procedure may result in vehicle displaying CHECK ENGINE or TIRE PRESSURE error messages.



