

# FTI-STK1: Vehicle Coverage and Preparation Notes

Make	Model	Year	Install	CAN	IMMO	BCM	Clutch	I/O Changes
DL-SUB9 Subaru	Legacy STD KEY AT (USA)	2020-24	Type 3	20-Pin	Type A	DSD	N/A	Green White/Blue N/A

**Covered vehicle** use **BLADE-AL-SUB9** firmware and the following required accessories, Weblink Hub & ACC RFID1. Flash module, and update the controller firmware. **Please follow the directions for RFID programming before attempting to program the BLADE module to the vehicle.**

**CAN:** Type 3 CAN connections are made using the 20-Pin BCM adapter and require connecting the white 2-pin connectors at marker [D] of the illustration.

**Immobilizer:** Type A IMMO requires connecting the white male and female 2-pin connectors at marker [C] of the illustration.

**Lights:** Parking lights are pre-wired in the FTI-STK1 harness. Replace the green/white wire of the CM I/O connector with the pre-terminated green/white wire of the harness.

**ACC-RFID1 (REQUIRED):** SUB9 firmware does not provide immobilizer data, an ACC-RFID1 is therefore required for remote start

**2nd START:** The FTI-STK1 harness is pre-wired with a red/black 2nd START output (not required in TYPE 1), cut and insulate the provided wire to prevent short circuits when not used.

**I/O Changes: None required**

**Advisory 1: Program ACC-RFID1 before attempting to program the BLADE module to the vehicle.**

**Advisory 2: Secure all 2-pin connections, both used and unused, to the main harness body.**

## FTI-STK1: Installation and Configuration Notes

- A** REQUIRED ACCESSORY
- B** ADAPTER REQUIRED
- C** REQUIRED CONFIGURATION (TYPE A IMMO)
- D** NO CONNECTION
- E** NO CONNECTION



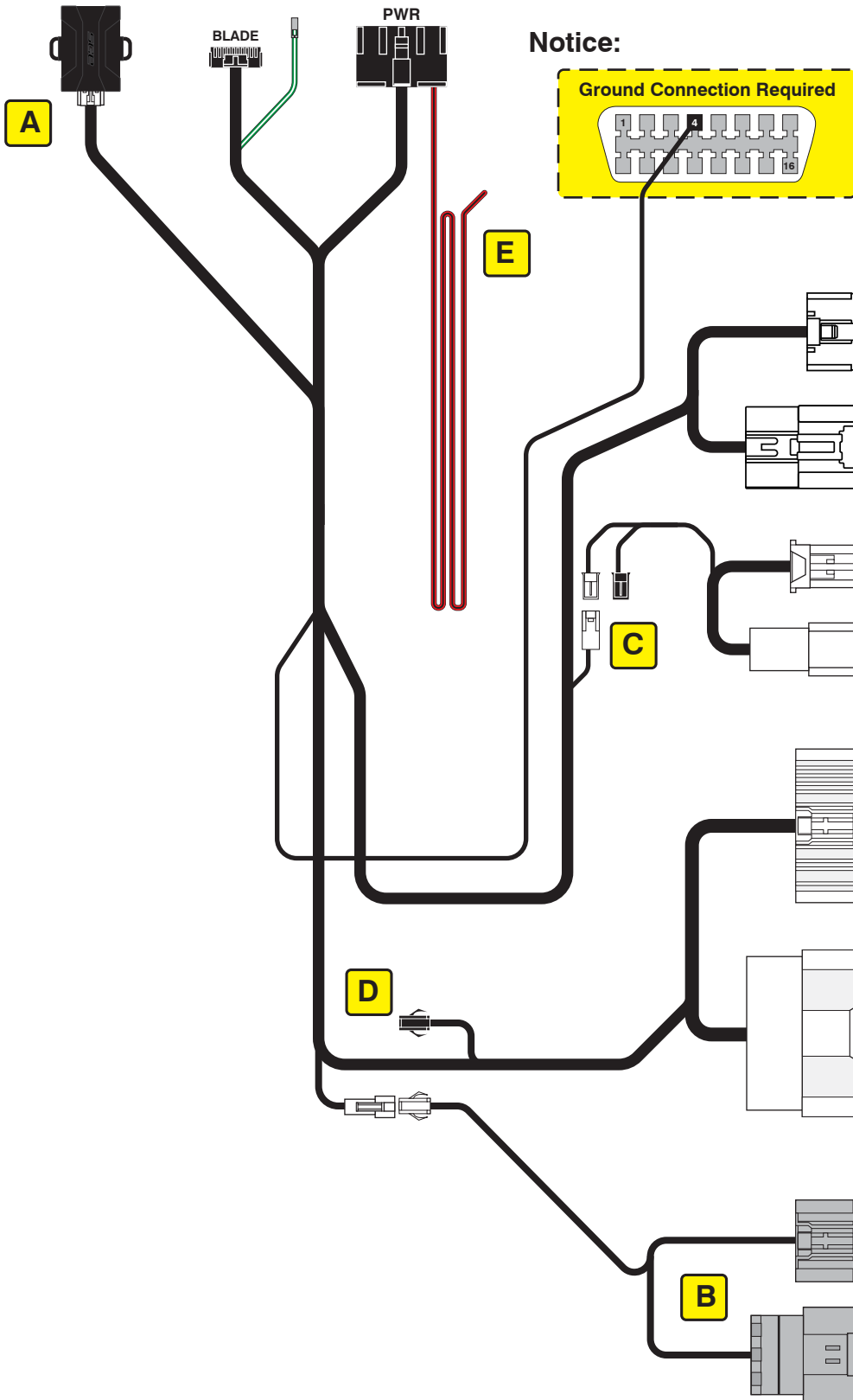
FEATURE COVERAGE														
IMMOBILIZER DATA	ARM OEM ALARM	DISARM OEM ALARM	DOOR LOCK	DOOR UNLOCK	PRIORITY UNLOCK	TRUNK/HATCH RELEASE	TACH OUTPUT	DOOR STATUS	TRUNK STATUS	BRAKE STATUS	E-BRAKE STATUS	A/M ALRM CONTROL FROM OEM REMOTE	A/M RS CONTROL FROM OEM REMOTE	AUTOLIGHT CTRL
○	○	○	○	○	○	○	○	○	○	○	○	○	○	○

•FT-DAS Required for manual transmission.  
•BOTH Red & Red/White MUST be connected with high current application.

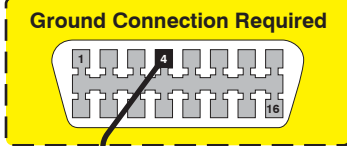
**Jumper Setting**

**CM7000/7200** **Cut loop for A/T**

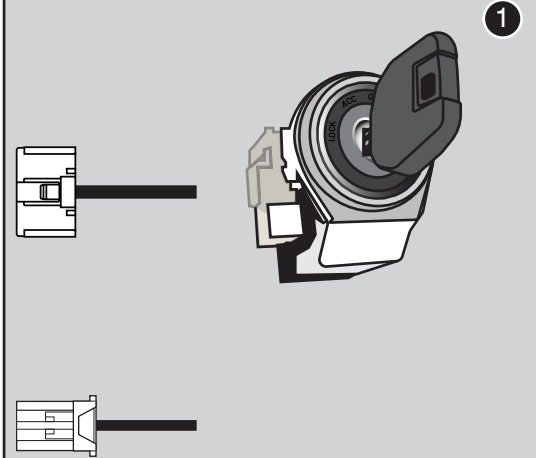
**CM900AS/900S Jumper**



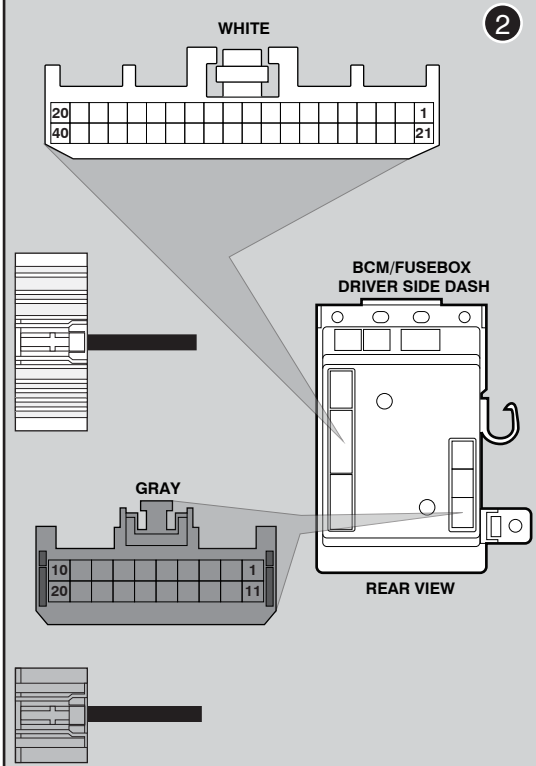
Notice:



**Ignition Switch Assembly**



**BCM/Fuse Box**

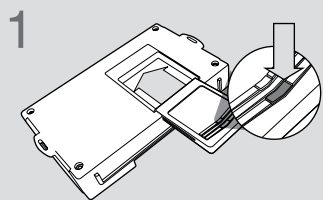


**LED Programming Error Codes**

Module LED flashing RED during programming

- 1x RED = Unable to communicate with RFID or immobilizer data.
- 2x RED = No CAN activity. Check the CAN wire connections.
- 3x RED = No ignition detected. Check the ignition wire connection and CAN.
- 4x RED = Required ignition output diode not detected.

## CARTRIDGE INSTALLATION



1 Slide cartridge into unit. Notice button under LED.

2

Ready for Module Programming Procedure.

## MODULE PROGRAMMING PROCEDURE



1 For this installation, the Weblink HUB is required.

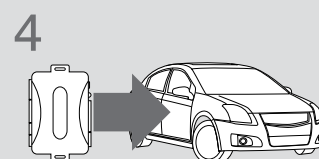


2 Remove OEM key 1 from keychain.

**!** Place all other keyfobs at least 1 foot away from the Weblink HUB. Failure to comply may result in damage to other keyfobs or interfere with the keyfob reading process.



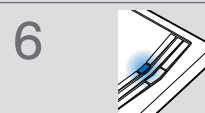
3 Flash the module using the Weblink HUB. Follow the on screen instructions to complete the keyfob reading process.



4 **WARNING:**  
Do not press the module programming button.  
Connect power first.  
Connect module to vehicle.



5 Using OEM key 1, turn key to ON position.



6 Wait, LED will turn solid BLUE for 2 seconds .



7 Turn key to OFF position.

8 Module Programming Procedure completed.