

FIRSTECH, LLC.
SUPPORT • 1(888) 820-3690, EXT. 203

Covered vehicle use **BLADE-AL-SUB9** firmware and the following required accessories, Weblink Hub & ACC RFID1. Flash module, and update the controller firmware. ***Please follow the directions for RFID programming before attempting to program the BLADE module to the vehicle.***

I/O Changes: None required

Advisory 2: Secure all 2-pin connections, both used and unused, to the main harness body.

- A** REQUIRED ACCESSORY
- B** ADAPTER NOT REQUIRED
- C** REQUIRED CONFIGURATION (TYPE B IMMO)
- D** REQUIRED CONNECTION
- E** NO CONNECTION

[illegible]

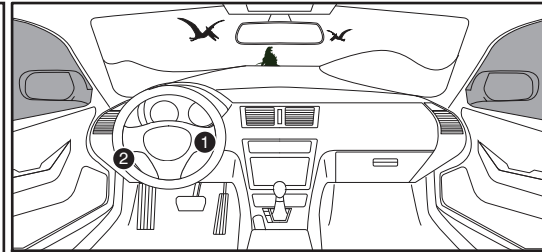
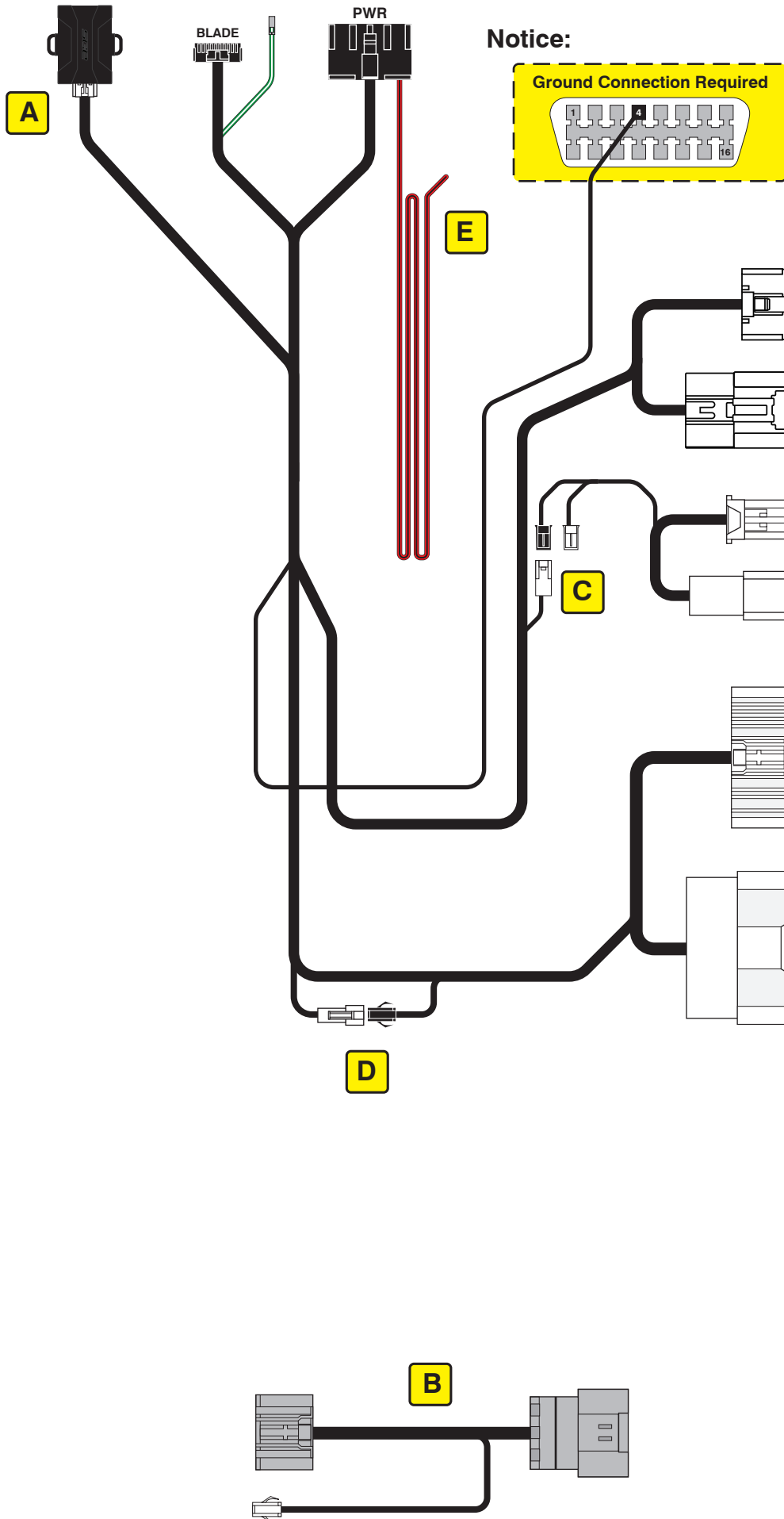
Jumper Setting

	Parking Light	Accessory	Ignition (Default)	(+)Door Trigger In (Default)	(-)Door Trigger In (Default)	Trunk	Starter	Ignition	Accessory (Default)
Blue Dot	[X]	[X]	[X]	[X]	[X]	[X]	[X]	[X]	[X]
Green Ring	[X]	[X]	[X]	[X]	[X]	[X]	[X]	[X]	[X]

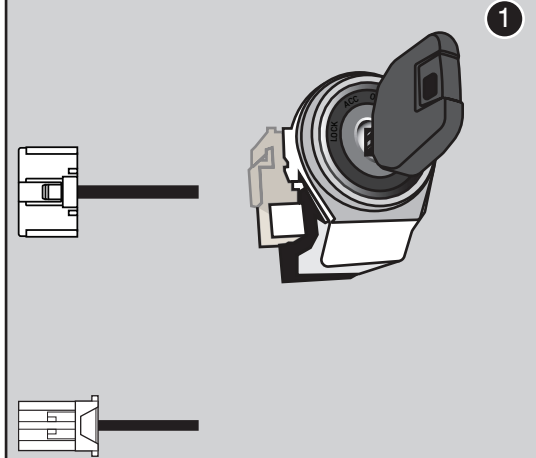
CM7000/7200

CMX

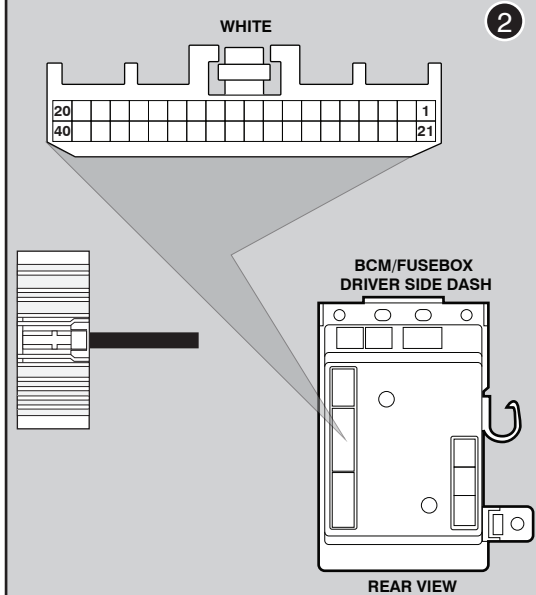
CM900AS/900S Jumper



Ignition Switch Assembly



BCM/Fuse Box

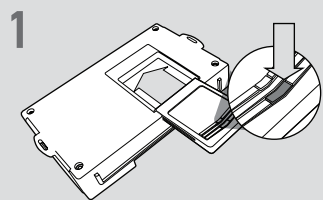


LED Programming Error Codes

Module LED flashing RED during programming

- 1x RED = Unable to communicate with RFID or immobilizer data.
- 2x RED = No CAN activity. Check the CAN wire connections.
- 3x RED = No ignition detected. Check the ignition wire connection and CAN.
- 4x RED = Required ignition output diode not detected.

CARTRIDGE INSTALLATION



1 Slide cartridge into unit. Notice button under LED.

2

Ready for Module Programming Procedure.

MODULE PROGRAMMING PROCEDURE



1 For this installation, the Weblink HUB is required.



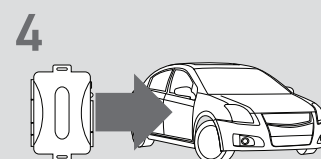
2 Remove OEM key 1 from keychain.



Place all other keyfobs at least 1 foot away from the Weblink HUB. Failure to comply may result in damage to other keyfobs or interfere with the keyfob reading process.



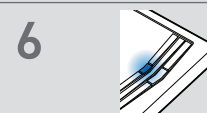
3 Flash the module using the Weblink HUB. Follow the on screen instructions to complete the keyfob reading process.



4 **WARNING:**
Do not press the module programming button.
Connect power first.
Connect module to vehicle.



5 Using OEM key 1, turn key to ON position.



6 Wait, LED will turn solid BLUE for 2 seconds .



7 Turn key to OFF position.

8

Module Programming Procedure completed.