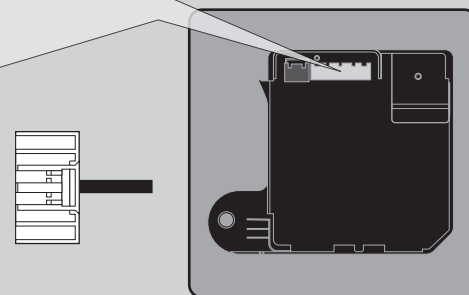
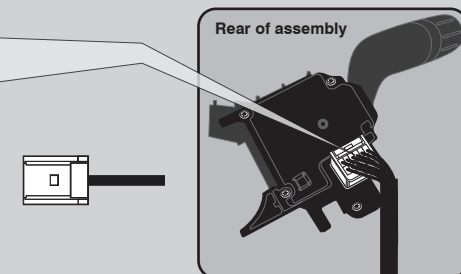


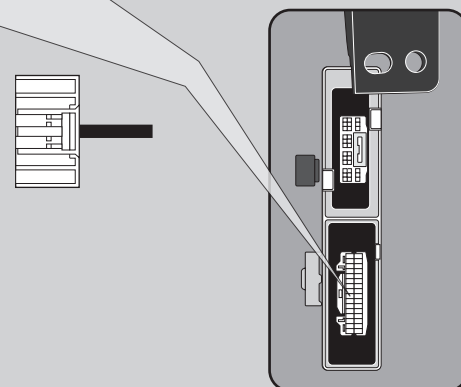
Body Control Module
(Driver Kick Panel) **1**



Headlight Switch Assembly
(Steering Column) **2**



LF Control Module
(Passenger Kick Panel) **3**

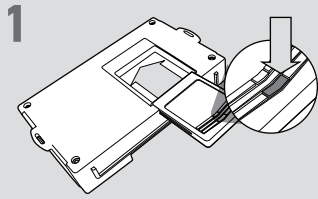


Códigos de error de programación de LED

El LED del módulo parpadea en ROJO durante la programación

- 1x Sin actividad CAN. Compruebe las conexiones de los cables CAN.
- 2x El encendido nunca se enciende. Compruebe la conexión de encendido.
- 3x No se detectó VIN. Compruebe las conexiones de los cables CAN.
- 4x No se detectó comando de desbloqueo. Presione desbloquear en el llavero OEM.
- 5x La llave no se sostiene para presionar el botón del lector de respaldo o no se pueden validar los datos del inmovilizador. Asegúrese de usar la misma llave que Klon para encender el encendido, verifique la conexión de datos immo.
- 6x Datos de Klon no válidos. Restablezca y vuelva a aprender el módulo desde el paso 1; si el problema persiste, comuníquese con el soporte técnico.

CARTRIDGE INSTALLATION



1 Slide cartridge into unit. Notice button under LED.

2

Ready for Module Programming Procedure.

MODULE PROGRAMMING PROCEDURE - PUSH TO START



1 For this installation, the Weblink HUB is required.

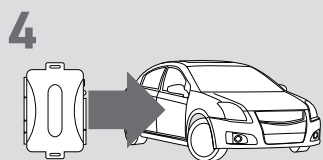


2 Remove OEM keyfob 1 from keychain.

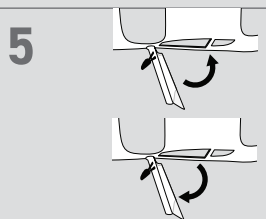
! Place all other keyfobs at least 1 foot away from the Weblink HUB. Failure to comply may result in damage to other keyfobs or interfere with the keyfob reading process.



3 Flash the module using the Weblink HUB. Follow the on screen instructions to complete the keyfob reading process.



4 **WARNING:**
Do not press the module programming button.
Connect power first.
Connect module to vehicle.

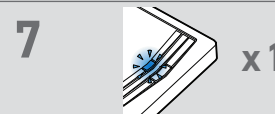


5 Close driver door.

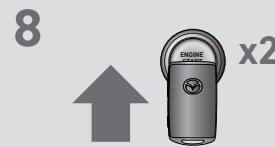
Re-open driver door to wake up data bus.



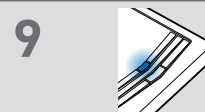
6 Press Unlock on keyfob 1.



7 Wait, LED will flash BLUE once [1x].



8 **DO NOT PRESS BRAKE PEDAL**
Do not press brake pedal. Using keyfob 1, push the tip of the keyfob against the start button twice [2x] to turn ignition ON.



9 Wait, LED will turn solid BLUE for 2 seconds .



10 **DO NOT PRESS BRAKE PEDAL**
Push start button once [1x] to OFF position.

! If the vehicle is equipped with a power liftgate: Open and close the power liftgate with the OEM keyfob.

11

Module Programming Procedure completed.