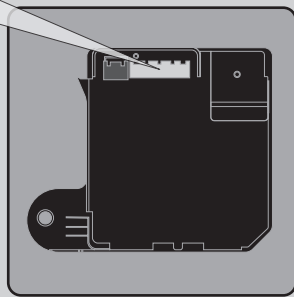
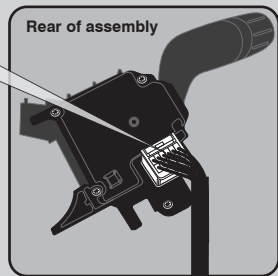


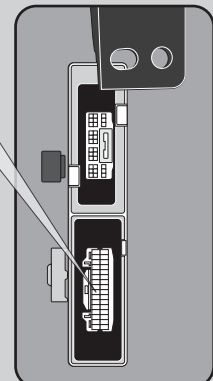
**Body Control Module**  
(Driver Kick Panel) **1**



**Headlight Switch Assembly**  
(Steering Column) **2**



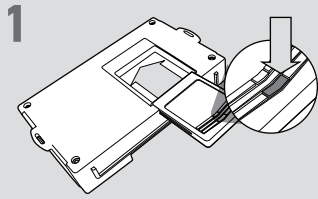
**LF Control Module**  
(Passenger Kick Panel) **3**



**LED Programming Error Codes**

- Module LED flashing RED during programming
- 1x No CAN activity. Check the CAN wire connections.
  - 2x Ignition never turns ON. Check the ignition connection.
  - 3x No VIN detected. Check the CAN wire connections.
  - 4x No unlock command detected. Press unlock on OEM fob.
  - 5x Key not held up to push button backup reader or unable to validate immobilizer data. Make sure to use the same key as Klon to turn ignition ON, check immo data connection.
  - 6x Invalid klon data. Reset and relearn module from step 1, if problem persist contact tech support.

## CARTRIDGE INSTALLATION



1 Slide cartridge into unit. Notice button under LED.

2

Ready for Module Programming Procedure.

## MODULE PROGRAMMING PROCEDURE - PUSH TO START



1 For this installation, the Weblink HUB is required.

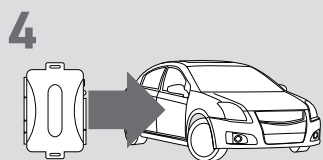


2 Remove OEM keyfob 1 from keychain.

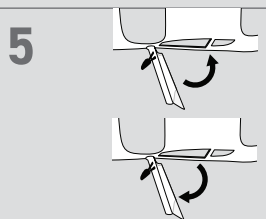
**!** Place all other keyfobs at least 1 foot away from the Weblink HUB. Failure to comply may result in damage to other keyfobs or interfere with the keyfob reading process.



3 Flash the module using the Weblink HUB. Follow the on screen instructions to complete the keyfob reading process.



4 **WARNING:**  
Do not press the module programming button.  
Connect power first.  
Connect module to vehicle.

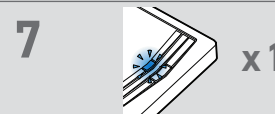


5 Close driver door.

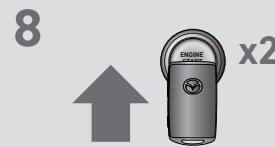
Re-open driver door to wake up data bus.



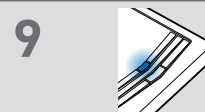
6 Press Unlock on keyfob 1.



7 Wait, LED will flash BLUE once [1x].



8 **DO NOT PRESS BRAKE PEDAL**  
Do not press brake pedal. Using keyfob 1, push the tip of the keyfob against the start button twice [2x] to turn ignition ON.



9 Wait, LED will turn solid BLUE for 2 seconds .



10 **DO NOT PRESS BRAKE PEDAL**  
Push start button once [1x] to OFF position.

**!** If the vehicle is equipped with a power liftgate: Open and close the power liftgate with the OEM keyfob.

11

Module Programming Procedure completed.