

OBD-II Connector

1

Ignition switch

2

BCM

3

**LED Programming Error Codes**

Module LED flashing RED during programming

- 1x - CAN error, check wiring
- 2x - VIN error, check CAN wiring
- 3x - Wrong firmware, confirm firmware flashed
- 4x - VIN error, vehicle not identified, contact support
- 5x - Immobilizer learn error, check RX/TX wiring
- 6x - KLON error, check RX/TX wiring, confirm pin positions
- 7x - KLON error, process failed, reset module and start over
- 8x - Encryption error, confirm key encryption, 80 bit detected
- 9x - Key in cylinder, remove and proceed

## CARTRIDGE INSTALLATION



1 Slide cartridge into unit. Notice button under LED.

2

Ready for Module Programming Procedure.

## MODULE PROGRAMMING PROCEDURE - WITH ONE OEM KEY & KLON



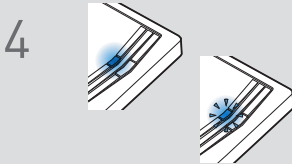
1 Insert key into ignition.



2 Turn key to ON position.



3 LED will turn solid RED.



4 If LED turns solid BLUE, proceed with step 13.

If LED flashes BLUE, proceed with step 5.



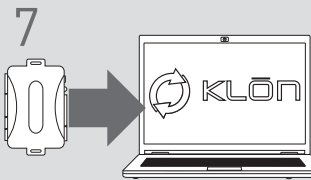
If the LED begins to flash RED/BLUE, the key has an 80-bit encryption that is not covered by KLON.



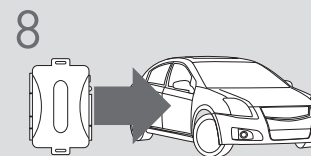
5 Turn key to OFF position.



6 **WARNING:**  
Disconnect power last.  
Disconnect module from vehicle.



7 Connect module to computer and proceed with extended programming.



8 **WARNING:** Do not press module programming button.  
Connect power first.  
Connect module to vehicle.



9 Insert key into ignition.



10 Turn key to ON position.



11 Wait, LED will turn solid BLUE for 2 seconds.



12 Turn key to OFF position.

13

Module Programming Procedure completed.

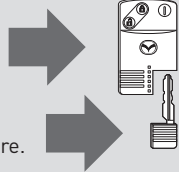
## MODULE PROGRAMMING PROCEDURE - WITH TWO OEM KEYS

### NOTE

I To complete this procedure, both OEM keys are required.

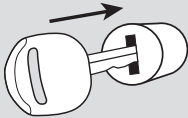


II Keep both OEM remotes at least 10 feet away from the vehicle.

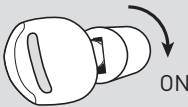


Use both valet keys for the module programming procedure.

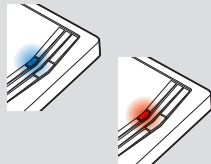
1 Insert key 1 into ignition.



2 Turn key 1 to ON position.



3 If LED turns solid BLUE, proceed with step 18.

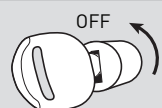


If LED turns solid RED, proceed with step 4.

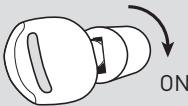
4 Wait, LED will flash BLUE. (This may take up to 10 seconds.)



5 Turn key 1 to OFF position.

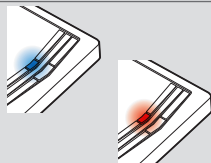


6 Turn key 1 to ON position.



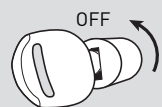
**!** If the LED begins to flash RED, verify the RX and TX connections between the module and the vehicle.

7 If LED turns solid BLUE for 2 seconds, proceed with step 18.

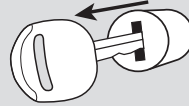


If LED turns solid RED, proceed with step 8 within 5 seconds, after LED turns OFF.

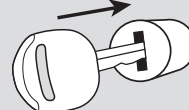
8 Turn key 1 to OFF position.



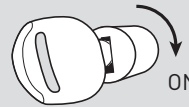
9 Remove key 1.



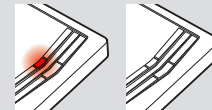
10 Insert key 2 into ignition.



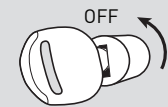
11 Turn key 2 to ON position.



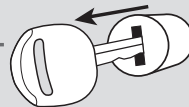
12 Wait, LED will turn solid RED then will turn OFF.



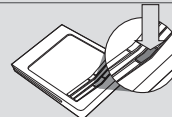
13 Turn key 2 to OFF position.



14 Remove key 2.



15 Press and release programming button.

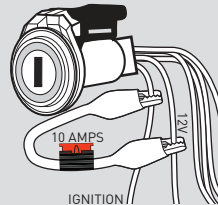


16 Remote start vehicle.



OR

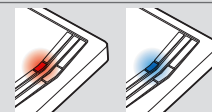
Jump the ignition to 12volts.



IGNITION

**!** If the LED begins to flash RED, you are using a cloned key or used the same key twice.

17 Wait, LED will turn solid RED then will turn solid BLUE.



18 Module Programming Procedure completed.