

Make	Model	Year	Adapter/ RDA	CAN	Lights	TPMS	Trunk	I/O Changes
DL-TL9 Toyota	Highlander 80 bit H Key with Start Stop System	2019	Type C RDA 2	BCM	Park / Auto 1/B	NOTE	SW/4	Green White/Blue START 2

Type 2 installation requires **BLADE-AL(DL)-TL9**, flash module and update controller firmware before beginning the installation.

Ignition Adapter: Each installation in this firmware group requires the use of a specific adapter, use only the adapter listed above and illustrated on the next page, using any other adapter will result in malfunction and possible vehicle damage.

CAN: Vehicle CAN data can be gathered from either the OBD-II connector or the BCM 30-pin connector, proper configuration of the harness CAN selection jumpers is required. Configure as illustrated on the following page.

Parking Lights: Park light and auto-light control are handled using the pre-terminated **green/white** wire bundled with the BLADE connector. Remove the (-) pk light wire from the controller's gray I/O connector and replace it with the one specified, for status and diagnostic reporting.

Door Locks (RDA): Connections vary by vehicle equipment and trim level, refer to wiring diagram for specific connections. Make no alternate connections, and secure all unused wires for safety.

Trunk/Hatch: Trunk/hatch control is optional and requires additional wiring if feature control is desired. Connect as illustrated.

I/O Changes: If indicated above, change the controller output from **Parking Light** to **START**:

- CM7 controllers - move jumper 3 to STARTER position
- CMX controllers - change HCP #1 to 2ND START (setting 2)
- CM900 controllers - set feature option 1-6 to 2.

If you encounter issues successfully disarming the OEM alarm during remote start, set option 1-01 to 2.
IMPORTANT VEHICLE IDENTIFICATION INFORMATION
REGARDING START/STOP SYSTEM, SEE PAGE 3.

FTI-TLK80: Installation and Configuration Notes

- A** REQUIRED CONNECTIONS
- B** REQUIRED ADAPTER
- C** REQUIRED CONFIGURATION
- D** OPTIONAL CONNECTION
- E** OPTIONAL CONNECTION



FEATURE COVERAGE																					
IMMOBILIZER DATA	PARKING LIGHTS	ARM OEM ALARM	DISARM OEM ALARM	DOOR LOCK	DOOR UNLOCK	PWR SLIDING DOOR (LEFT)	PWR SLIDING DOOR (RIGHT)	TRUNK/HATCH RELEASE	POWER SLIDING DOOR (R)	DOOR STATUS	TRUNK STATUS	HOOD STATUS	TACH OUTPUT	BRAKE STATUS	E-BRAKE STATUS	A/M ALARM CTRL FROM OEM REMOTE	A/M RS CONTROL FROM OEM REMOTE	SECURE TAKEOVER	AUTO-LIGHT CONTROL	3X LOCK REMOTE START FROM OEM	DISCO BALL

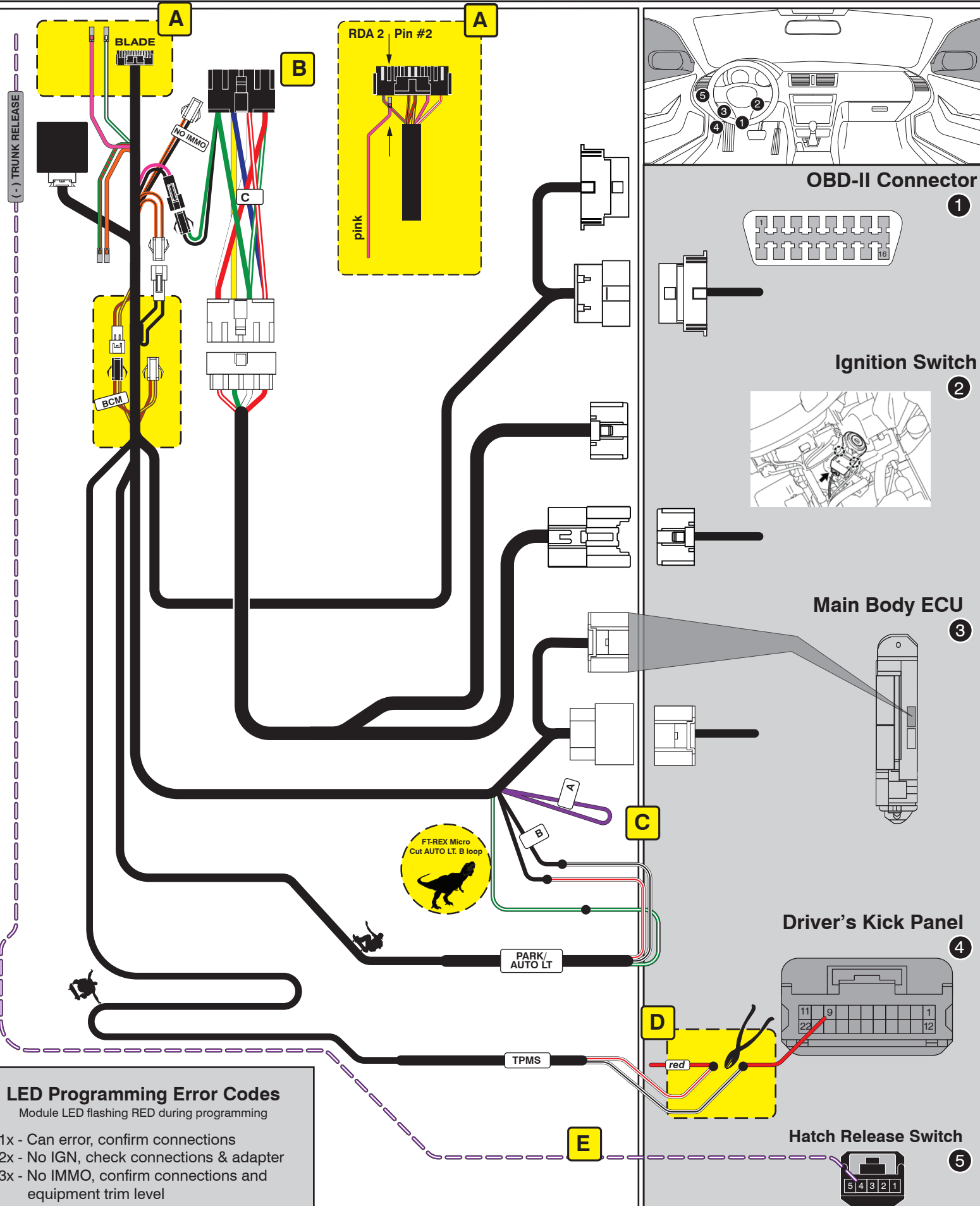
•FT-DAS Required for manual transmission.
•BOTH Red & Red/White MUST be connected with high current application.

Jumper Setting

Parking Light	Accessory	Ignition (Default)	(+)Door Trigger In (Default)	(-)Door Trigger In (Default)
Trunk	Starter	Parking Light (Default)	Starter	Ignition
			Accessory (Default)	

CM7000/7200 Cut loop for A/T

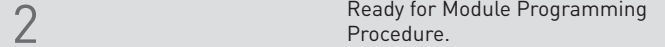
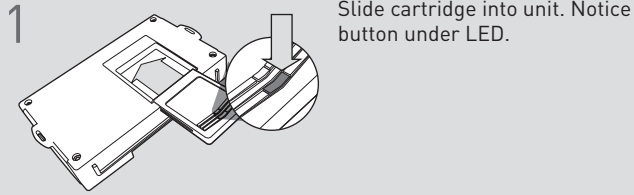
CM900AS/900S Jumper



LED Programming Error Codes
Module LED flashing RED during programming

- 1x - Can error, confirm connections
- 2x - No IGN, check connections & adapter
- 3x - No IMMO, confirm connections and equipment trim level
- 4x - VIN error, contact engineering

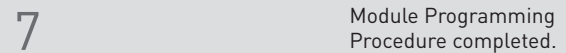
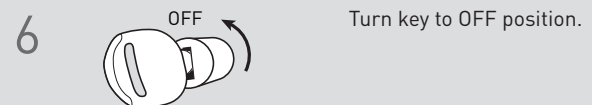
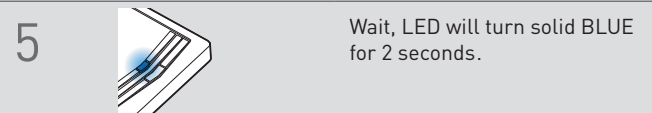
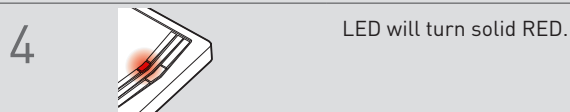
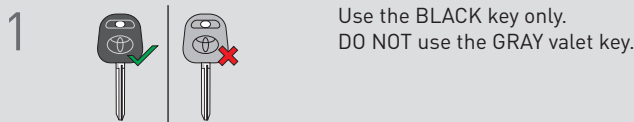
CARTRIDGE INSTALLATION



MODULE PROGRAMMING PROCEDURE

NOTE

1 **IMPORTANT:** The hood must be closed.



VEHICLES EQUIPPED WITH THE START/STOP SYSTEM

