

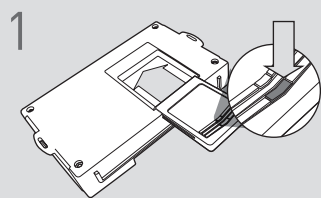
CN1 - Green/White - START
- CM7 - Jumper #3 to STARTER
- CMX - HCP#1 to 2ND START [2]
- CM9 - Feature option 1-06-2

Códigos de error de programación de LED
 El LED del módulo parpadea en ROJO durante la programación

- 1x - Error de CAN, comprobar conexiones
- 2x - Fallo de detección de VIN, verifique las conexiones CAN
- 3x - VIN desconocido
- 4x - Error IMMO, verifique las conexiones
- 5x - Se detectó el arrancador remoto OEM, retírelo del vehículo

LED rojo fijo - Error de TXCT / CODE, verifique el cableado y confirmar el nivel del equipo.

CARTRIDGE INSTALLATION



1 Slide cartridge into unit. Notice button under LED.

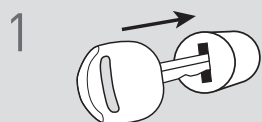
2

Ready for Module Programming Procedure.

TYPE 1 - MODULE PROGRAMMING PROCEDURE

NOTE

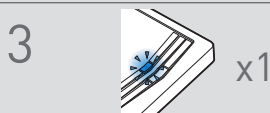
I Between each step, LED will turn solid RED, this is the default standby mode.



1 Insert key into ignition.



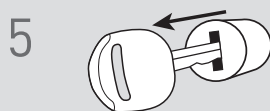
2 Turn key to ON position.



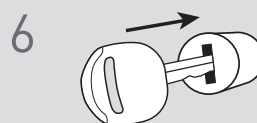
3 LED will flash BLUE once [1x].



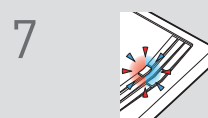
4 Turn key to OFF position.



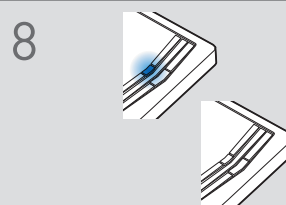
5 Remove key.



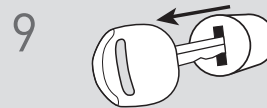
6 Insert key into ignition.



7 LED will flash BLUE and RED.
[If vehicle is not equipped with immobilizer, press module programming button.]



8 Wait, LED will turn solid BLUE then will turn OFF.



9 Remove key.

10

Module Programming Procedure completed.