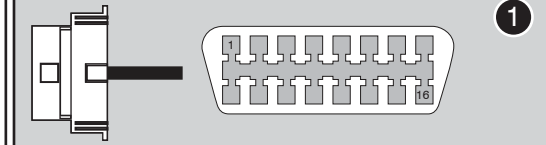


OBD-II Connector



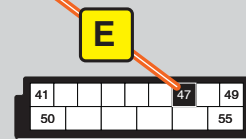
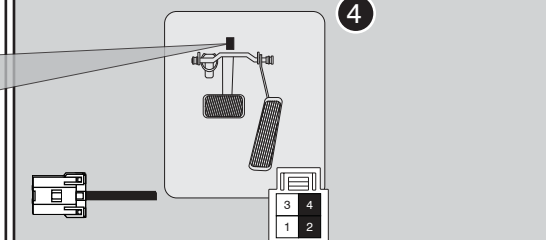
PTS Button



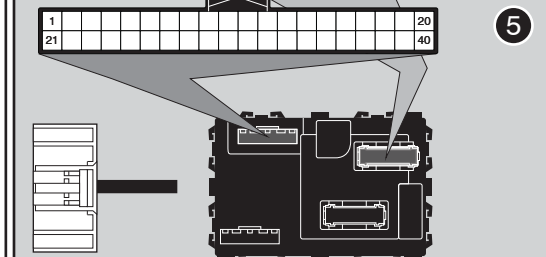
Immobilizer Connector



Brake Light Switch



BCM

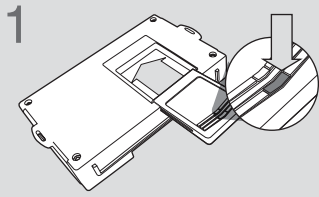


LED Programming Error Codes

Module LED flashing RED during programming

- 1x - CAN error, confirm connections
- 2x - No PTS signal, check connections
- 3x - No IGN, check voltage at OBD-II
- 4x - No brake status, check connections
- 5x - No immobilizer data, only one key
- 6x - No brake, connections
- 7x - No brake, connections
- 8x - No immobilizer data
- 9x - Different key in use
- 10x - No PTS signal
- 11x - No immobilizer data
- 12x - Klon error, redo with doors closed
- 13x - No ignition

CARTRIDGE INSTALLATION



1 Slide cartridge into unit. Notice button under LED.

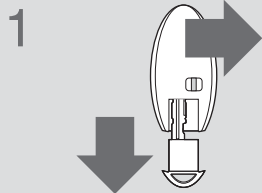
2

Ready for Module Programming Procedure.

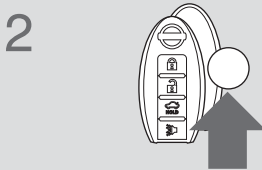
MODULE PROGRAMMING PROCEDURE - WITH KLON - 1 OF 2

NOTE

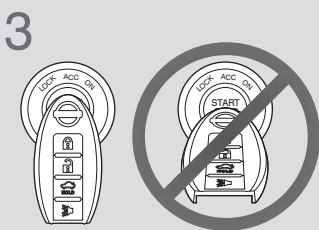
- 1 When programming, only one key fob will be used. The other one must be located at least 10 feet away from the vehicle.



1 Remove valet key from keyfob 1.



2 Remove battery from keyfob 1.



3 Place and hold keyfob 1 on push start button. (No battery)

Keyfob transponder is located behind keyfob logo.

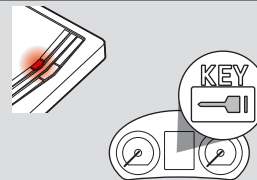


IMPORTANT: Place and hold keyfob 1 on push start button for steps 3 to 10.



Push start button twice [2x] to ON position.

5



LED will turn solid RED. Wait 12 seconds or until the security light flashes. (The security light may not appear.)

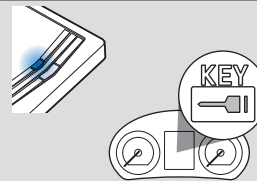
6



AT: Press and release brake pedal once [1x].

MT: Press and release both brake and clutch pedals at the same time, once [1x].

7



LED will turn solid BLUE. Wait 12 seconds or until the security light flashes. (The security light may not appear.)

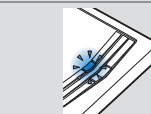
8



AT: Press and release brake pedal once [1x].

MT: Press and release both brake and clutch pedals at the same time, once [1x].

9



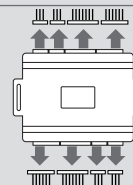
Wait, LED will flash BLUE rapidly.

10



Push start button once [1x] to OFF position.

11



Disconnect all connectors from remote starter except the power connector.

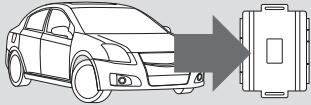


IMPORTANT: READ NEXT PAGE !

MODULE PROGRAMMING PROCEDURE - WITH KLON - 2 OF 2

12 Disconnect the power connector.

13 Remove remote starter from vehicle.



14 Connect remote starter to computer.



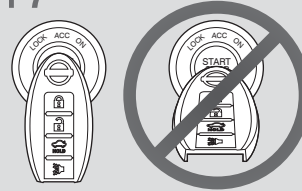
15 Proceed with extended programming.



16 Connect remote starter to vehicle.



17 Place and hold keyfob 1 on push start button. (No battery)



Keyfob transponder is located behind keyfob logo.

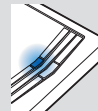
Wait until the security light turns OFF.

! IMPORTANT: Place and hold keyfob 1 on push start button for steps 17 to 20.

18 Push start button twice [2x] to ON position.



19 Wait, LED will turn solid BLUE for 2 seconds.



20 Push start button once [1x] to OFF position.



21 Module Programming Procedure completed.

WARNING: READ BEFORE REMOTE STARTING THE VEHICLE

IMPORTANT

- I All vehicle doors must be closed and locked prior to remote start sequence. Failure to comply will result in remote starter malfunction.

TAKE OVER PROCEDURE - PUSH TO START - TO THE VEHICLE OWNER

NOTE

- I All vehicle doors must be closed and locked prior to remote start sequence.



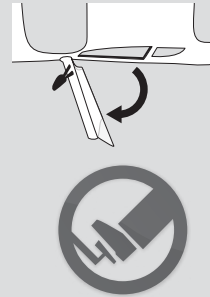
TIME RESTRICTION COMING UP !

1



Unlock vehicle door using OEM or after-market remote, or door request switch.

2



TIME RESTRICTION

Within 45 SECONDS from previous step:

Open vehicle door.
Enter vehicle.
Close vehicle door.

Press and release BRAKE pedal.

3

Take over procedure completed.



Failure to follow procedure will result in vehicle engine shutdown.