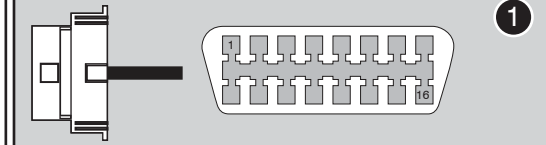


**OBD-II Connector**



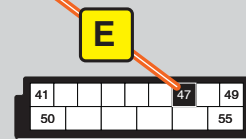
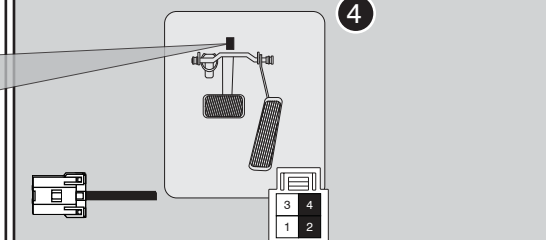
**PTS Button**



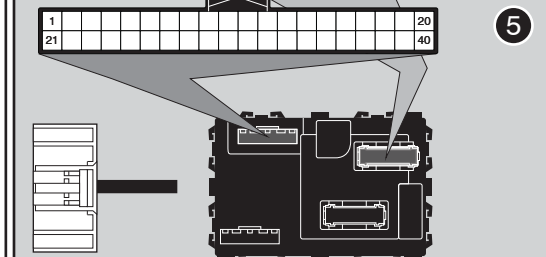
**Immobilizer Connector**



**Brake Light Switch**



**BCM**

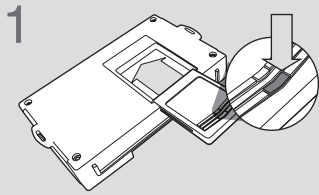


**LED Programming Error Codes**

Module LED flashing RED during programming

- 1x - CAN error, confirm connections
- 2x - No PTS signal, check connections
- 3x - No IGN, check voltage at OBD-II
- 4x - No brake status, check connections
- 5x - No immobilizer data, only one key
- 6x - No brake, connections
- 7x - No brake, connections
- 8x - No immobilizer data
- 9x - Different key in use
- 10x - No PTS signal
- 11x - No immobilizer data
- 12x - Klon error, redo with doors closed
- 13x - No ignition

## CARTRIDGE INSTALLATION



1 Slide cartridge into unit. Notice button under LED.

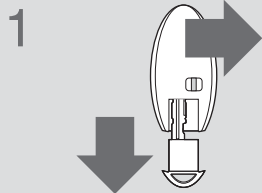
2

Ready for Module Programming Procedure.

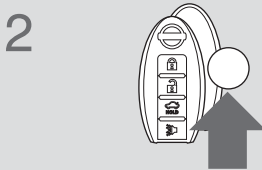
## MODULE PROGRAMMING PROCEDURE - WITH KLON - 1 OF 2

### NOTE

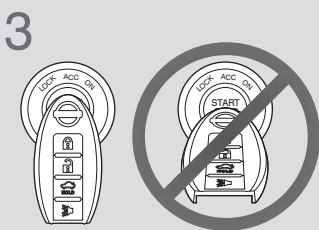
- 1 When programming, only one key fob will be used. The other one must be located at least 10 feet away from the vehicle.



1 Remove valet key from keyfob 1.



2 Remove battery from keyfob 1.



3 Place and hold keyfob 1 on push start button. (No battery)

Keyfob transponder is located behind keyfob logo.

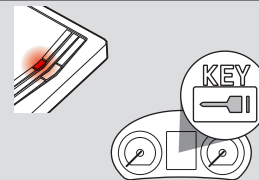


**IMPORTANT:** Place and hold keyfob 1 on push start button for steps 3 to 10.



Push start button twice [2x] to ON position.

5



LED will turn solid RED. Wait 12 seconds or until the security light flashes. (The security light may not appear.)

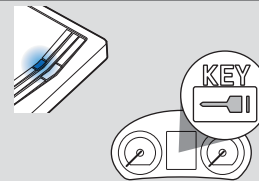
6



AT: Press and release brake pedal once [1x].

MT: Press and release both brake and clutch pedals at the same time, once [1x].

7



LED will turn solid BLUE. Wait 12 seconds or until the security light flashes. (The security light may not appear.)

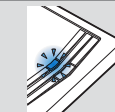
8



AT: Press and release brake pedal once [1x].

MT: Press and release both brake and clutch pedals at the same time, once [1x].

9



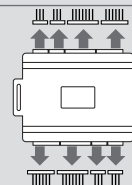
Wait, LED will flash BLUE rapidly.

10



Push start button once [1x] to OFF position.

11



Disconnect all connectors from remote starter except the power connector.

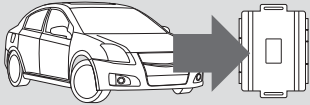


**IMPORTANT: READ NEXT PAGE !**

## MODULE PROGRAMMING PROCEDURE - WITH KLON - 2 OF 2

**12** Disconnect the power connector.

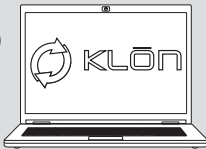
**13** Remove remote starter from vehicle.



**14** Connect remote starter to computer.



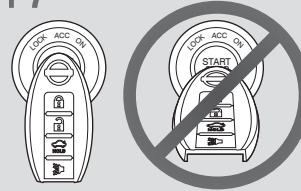
**15** Proceed with extended programming.



**16** Connect remote starter to vehicle.



**17** Place and hold keyfob 1 on push start button. (No battery)



Keyfob transponder is located behind keyfob logo.

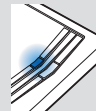
Wait until the security light turns OFF.

**!** IMPORTANT: Place and hold keyfob 1 on push start button for steps 17 to 20.

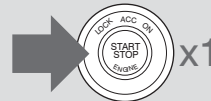
**18** Push start button twice [2x] to ON position.



**19** Wait, LED will turn solid BLUE for 2 seconds.



**20** Push start button once [1x] to OFF position.



**21** Module Programming Procedure completed.

## WARNING: READ BEFORE REMOTE STARTING THE VEHICLE

### IMPORTANT

- I All vehicle doors must be closed and locked prior to remote start sequence. Failure to comply will result in remote starter malfunction.

## TAKE OVER PROCEDURE - PUSH TO START - TO THE VEHICLE OWNER

### NOTE

- I All vehicle doors must be closed and locked prior to remote start sequence.



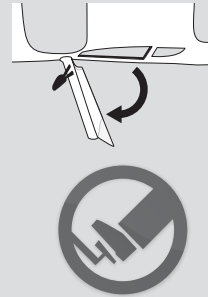
**TIME RESTRICTION COMING UP !**

1



Unlock vehicle door using OEM or after-market remote, or door request switch.

2



### TIME RESTRICTION

Within 45 SECONDS from previous step:

Open vehicle door.  
Enter vehicle.  
Close vehicle door.

Press and release BRAKE pedal.

3

Take over procedure completed.



Failure to follow procedure will result in vehicle engine shutdown.