

# FTI-NSP1: Vehicle Coverage and Preparation Notes

Make	Model	Year	Install	CAN	Lights	BCM	Locks	Clutch
DL-NI5 Infiniti	G35 PTS AT	2009	Type1	CAN A	Optional RED	PKP	Type B	Clutch Assembly

Type 1 installation requires **BLADE-AL(DL)-NI5** firmware, flash module and update the controller before installing.

**NI-LOCK harness configuration:** Lock connections for Intelli-key vehicles are type B, secure unused connectors for safety.

**Optional Hazard Light Control:** Pre-wired in NI-LOCK harness (**green/white**). Vehicles equipped with **MOMENTARY** switch use POC1 set to option #30 [Hazard1], vehicles equipped with **LATCHING** switch use option #23 [Hazard2].

**RAP Shutdown:** Pre-wired in NI-LOCK harness to driver's door pin at BCM, connect **CM POC** configured for RAP to **orange/white** wire in **NI-LOCK** harness.

**PARKING LIGHTS:** Positive parking lights are available at the rear of the fuse junction panel if you prefer parking light over hazard lights, connector E103/106/6, pin #9, colors\* vary by year and model, test circuit behavior to confirm light activity.

**NI-LOCK/NI5 Behavior and wiring options:** NI-LOCK accessory harness is capable of providing connection to **ARM & DISARM (lock A, B, or C), RAP (org/wht), and HAZARD (grn/wht)** connections in a single connector at the BCM.



NI5 firmware is capable of providing control over the factory alarm, automatically disarming the alarm when remote start is engaged, by providing ignition and immobilizer data emulating key presence. The alarm will disarm when needed but will not rearm at the end of a remote start session, so this must also be considered. No additional arm/disarm wiring is required, but upon a normal unlock using aftermarket remotes the instrument cluster will illuminate as a result of ignition activity. If this activity is an issue, mandatory connection of the arm/disarm wires at the BCM is required, as well as using the circuit jumper in note [B] of the installation diagram.

## FTI-NSP1: Installation and Configuration Notes

- A** CONNECTION REQUIRED - SEE BRAKE 1/2 NOTE ON NEXT PAGE
- B** NOT REQUIRED - SEE FIRMWARE NOTE ABOVE
- C** REQUIRED CONNECTION
- D** CONFIGURE AND CONNECT AS ILLUSTRATED
- E** OPTIONAL CONNECTION

•FT-DAS Required for manual transmission.  
•BOTH Red & Red/White MUST be connected with high current application.

**Jumper Setting**

**CM7000/7200** **Cut loop for A/T**

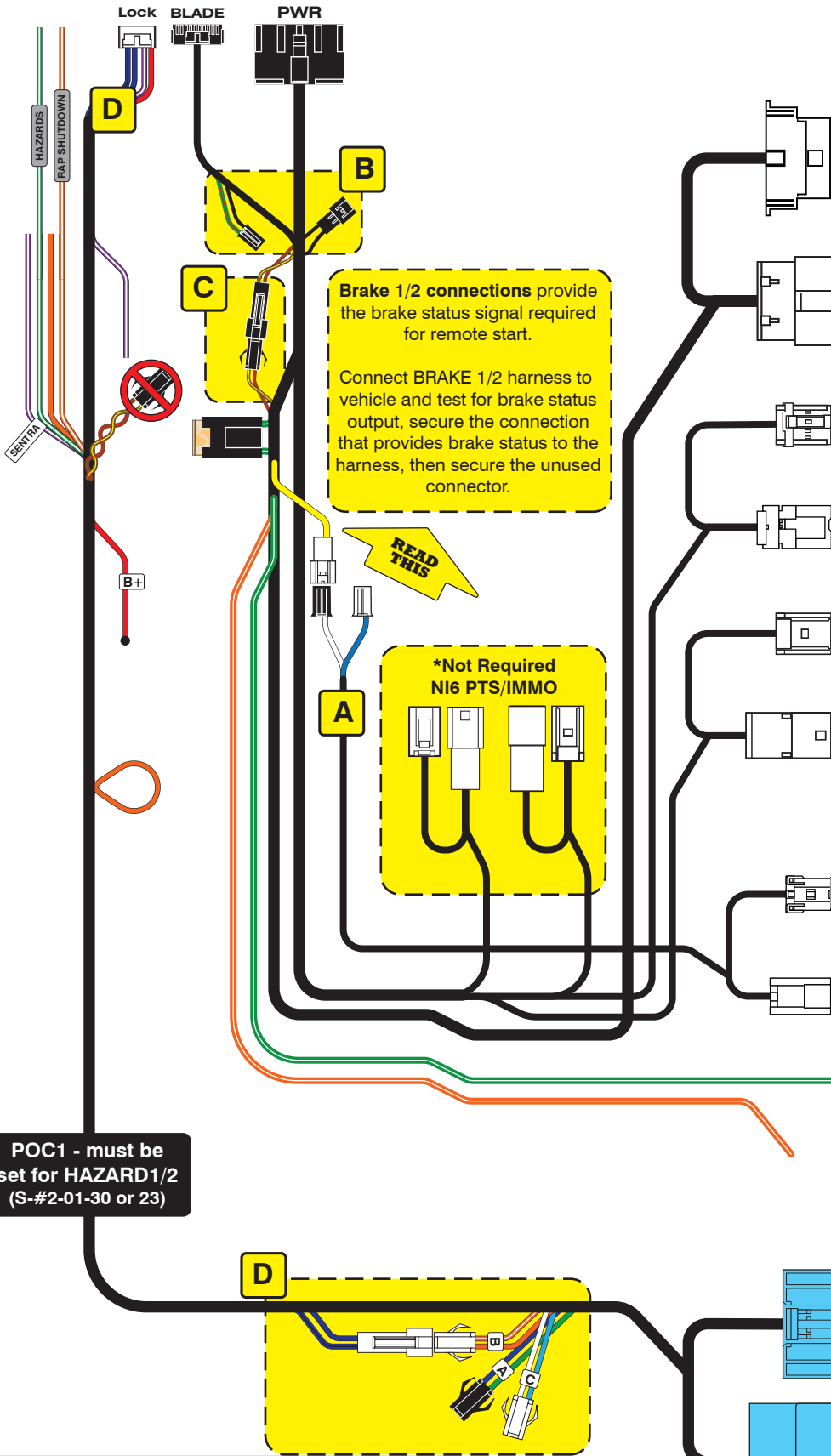
**CM900S/900AS**

**CM900AS/900S Jumper**

START  
ACC  
IGN1



FEATURE COVERAGE														
IMMOBILIZER DATA	SECURE TAKEOVER	DOOR LOCK	DOOR UNLOCK	DISARM OEM ALARM	A/M ALARM CTRL	A/M RS CONTROL	TRUNK/HATCH RELEASE	DOOR STATUS	HOOD STATUS	TRUNK STATUS	BRAKE STATUS	TRACH OUTPUT	E-BRAKE STATUS	



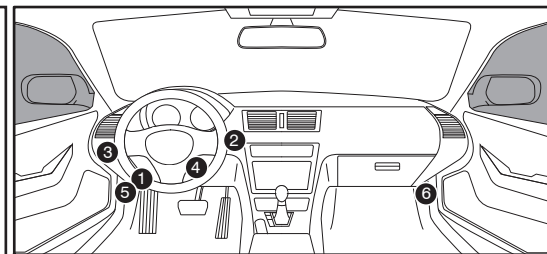
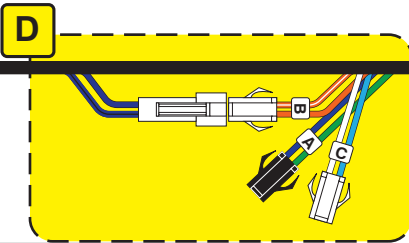
**Brake 1/2 connections** provide the brake status signal required for remote start.

Connect BRAKE 1/2 harness to vehicle and test for brake status output, secure the connection that provides brake status to the harness, then secure the unused connector.

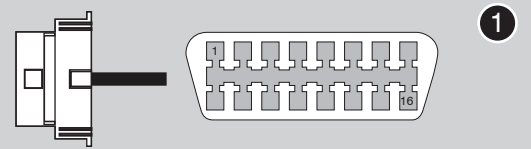
**\*Not Required NI6 PTS/IMMO**

**READ THIS**

**POC1 - must be set for HAZARD1/2 (S-#2-01-30 or 23)**



**OBD-II Connector**



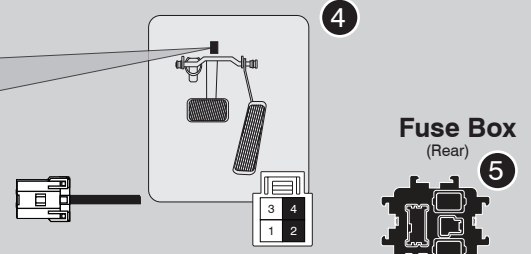
**PTS Button**



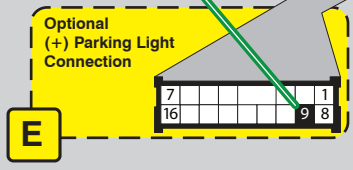
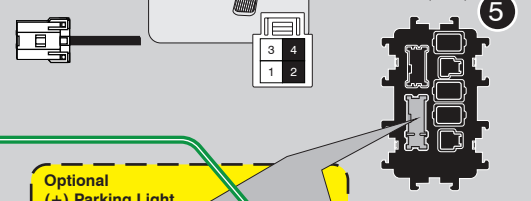
**Keyport Connector**



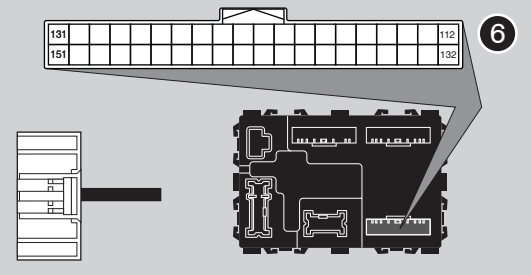
**Brake Light Switch**



**Fuse Box (Rear)**



**BCM**



**LED Programming Error Codes**

Module LED flashing RED during programming

- 1x - CAN error, check OBD-II connector
- 2x - No PTS signal, check connector to PTS button
- 3x - No immobilizer data, check connector to key port
- 4x - No PTS signal, check connector to PTS button
- 5x - No immobilizer data, check connector to key port
- 6x - No ignition, check connector to OBD-II port
- 7x - Key error, confirm using only one key through process
- 8x - VIN error, confirm Weblink vehicle entry

## CARTRIDGE INSTALLATION



1 Slide cartridge into unit. Notice button under LED.

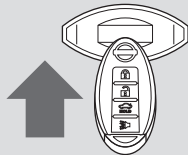
2

Ready for Module Programming Procedure.

## MODULE PROGRAMMING PROCEDURE

### NOTE

- 1 When programming, only one key fob will be used. The other one must be located at least 10 feet away from the vehicle.



Insert keyfob 1 in keyport.

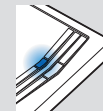


2



DO NOT PRESS BRAKE PEDAL  
Push start button twice [2x] to ON position.

3



Wait, LED will turn solid BLUE for 2 seconds.

4



DO NOT PRESS BRAKE PEDAL  
Push start button once [1x] to OFF position.

5

Module Programming Procedure completed.

## WARNING: READ BEFORE REMOTE STARTING THE VEHICLE

### IMPORTANT

- I All vehicle doors must be closed and locked prior to remote start sequence. Failure to comply will result in remote starter malfunction.

## TAKE OVER PROCEDURE - PUSH TO START - TO THE VEHICLE OWNER

### NOTE

- I All vehicle doors must be closed and locked prior to remote start sequence.



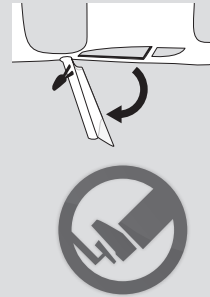
**TIME RESTRICTION COMING UP !**

1



Unlock vehicle door using OEM or after-market remote, or door request switch.

2



### TIME RESTRICTION

Within 45 SECONDS from previous step:

Open vehicle door.  
Enter vehicle.  
Close vehicle door.

Press and release BRAKE pedal.

3

Take over procedure completed.



Failure to follow procedure will result in vehicle engine shutdown.