

Make	Model	Year	Install	CAN	Lights	IGN	Hood	I/O Changes
DL-CH7 Dodge	Journey PTS	2018-20	Type 2	CJB	Park / Auto Type A	BCM	BCM	Green White/Blue

### Firmware:

Los vehículos cubiertos utilizan **BLADE-AL (DL) -CH7**, módulo flash y actualizan el firmware del controlador antes de la instalación.

### CAN:

Los vehículos **tipo 2** utilizan el cable de extensión CAN incluido para obtener datos CAN del bloque de unión CAN verde (lado izquierdo del tablero) o desde el BCM (pin # 25, CANH, marrón, pin # 26, CANL, amarillo).

### Luces:

Las luces de estacionamiento **tipo A** usan el conector de 6 pines, asegure el conector de 10 pines sin usar por seguridad.

### Ignición:

Las disposiciones comunes de encendido se enumeran en el diagrama de la HOJA, el encendido también está disponible en el BCM (conector C5 / E, pin # 27, rosa / blanco).

**\* Los vehículos del año modelo 2019 deben usar la ubicación de encendido ilustrada, para su correcto funcionamiento. Fracaso hacerlo provocará un mal funcionamiento.**

El cable de estado del capó está disponible en el BCM del vehículo, conector C1, pin # 11 (violeta / azul).

## FTI-CDP1 - Notas de instalación y configuración

- A** No se requieren conexiones.
- B** No requerido.
- C** Estado del pin del capó del vehículo (-).
- D** Puente de encendido, NO se requiere CONEXIÓN.
- E** Conexión de encendido.



FEATURE COVERAGE													
<input type="checkbox"/>	<input type="checkbox"/>	<input type="checkbox"/>	<input type="checkbox"/>	<input type="checkbox"/>	<input type="checkbox"/>	<input type="checkbox"/>	<input type="checkbox"/>	<input type="checkbox"/>	<input type="checkbox"/>	<input type="checkbox"/>	<input type="checkbox"/>	<input type="checkbox"/>	<input type="checkbox"/>
IMMOBILIZER DATA	PRIORITY UNLOCK	DOOR LOCK	DOOR UNLOCK	ARM OEM ALARM	DISARM OEM ALARM					DOOR STATUS	TRUNK STATUS	RAP SHUTDOWN	BRAKE STATUS
										E-BRAKE STATUS	TACH OUTPUT	DATA/MUX IGN/ST	SECURE TAKEOVER
													PARKING LIGHTS

**•FT-DAS Required for manual transmission.**  
**•BOTH Red & Red/White MUST be connected with high current application.**

**Jumper Setting**

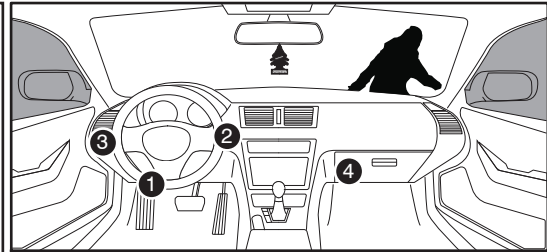
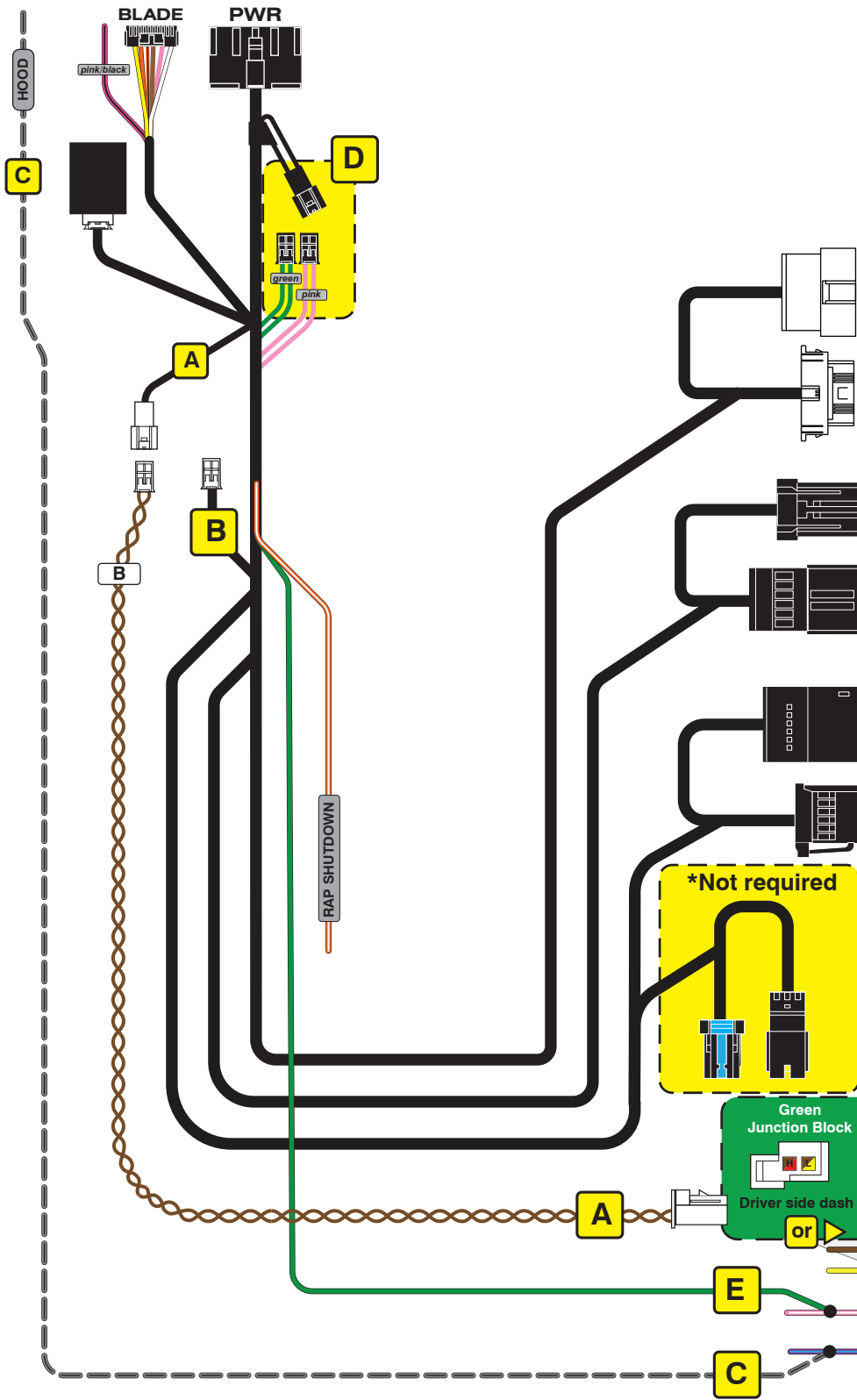
Parking Light	Accessory	Ignition (Default)	Trunk	Starter	Parking Light (Default)	(+)-Door Trigger In (Default)	(-)-Door Trigger In (Default)	Starter Ignition	Accessory (Default)
---------------	-----------	--------------------	-------	---------	-------------------------	-------------------------------	-------------------------------	------------------	---------------------

**CM7000/7200**

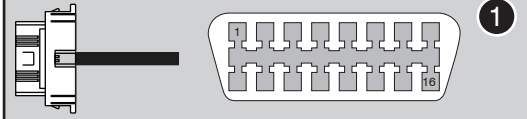
**CM-900S/900AS**

**CM900AS/900S Jumper**

START  
ACC  
IGN1



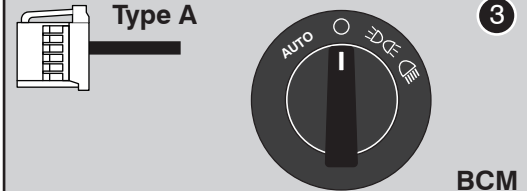
OBD-II connector



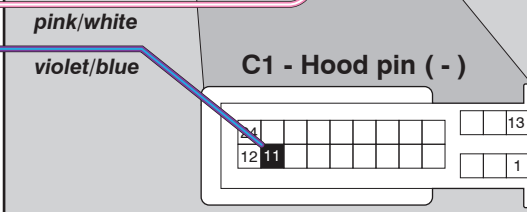
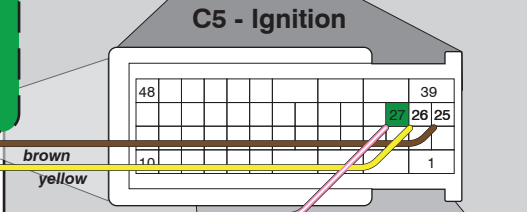
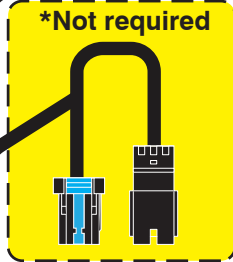
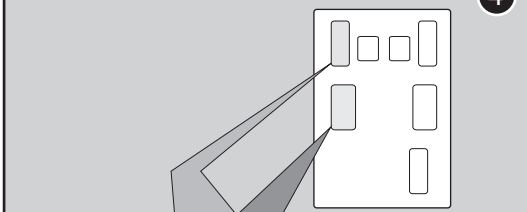
PTS button



Headlight switch



BCM

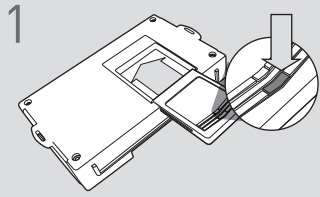


**Códigos de error de programación de LED**

El LED del módulo parpadea en ROJO durante la programación

- 1x - Muestra
- 2x - Muestra
- 3x - Muestra
- 4x - Muestra
- 5x - Muestra
- 6x - Muestra
- 7x - Muestra

## CARTRIDGE INSTALLATION

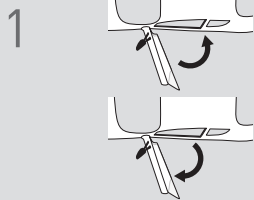


1 Slide cartridge into unit. Notice button under LED.

2

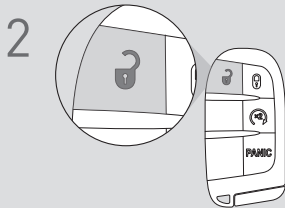
Ready for Module Programming Procedure.

## MODULE PROGRAMMING PROCEDURE - WITH KLON - 1 OF 2



1 Close driver door.

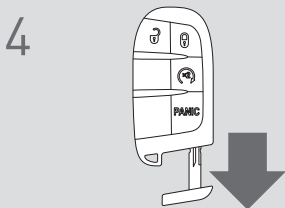
Re-open driver door to wake up data bus.



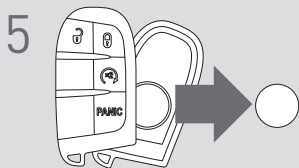
2 Press UNLOCK on keyfob 1.



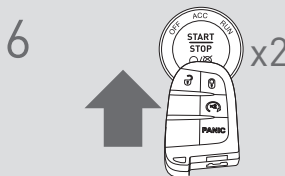
3 Wait, LED will flash BLUE once [1x].



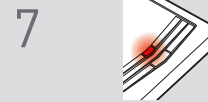
4 Remove valet key from keyfob 1.



5 Remove batteries from keyfob 1.



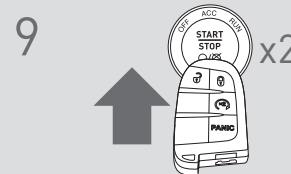
6 Push start button twice [2x] with keyfob 1 to ON position. (No battery)



7 Wait, LED will turn solid RED.



8 Push start button once [1x] to OFF position.



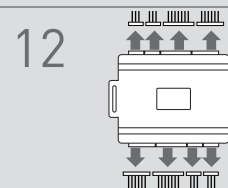
9 Push start button twice [2x] with keyfob 1 to ON position. (No battery)



10 Wait, if LED flashes BLUE rapidly, proceed to step 11. If LED turns solid RED, repeat steps 8 to 10.



11 Push start button once [1x] to OFF position.



12 Disconnect all connectors from remote starter except the power connector.

13

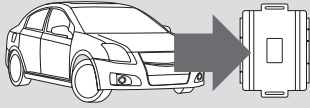
Disconnect the power connector.



**IMPORTANT: READ NEXT PAGE !**

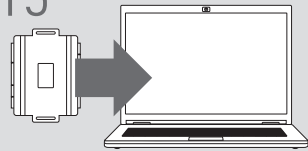
## MODULE PROGRAMMING PROCEDURE - WITH KLON - 2 OF 2

14



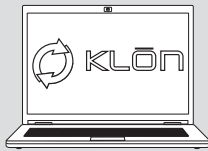
Remove remote starter from vehicle.

15



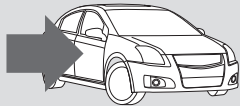
Connect remote starter to computer.

16



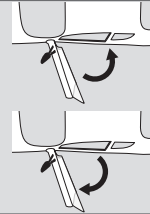
Proceed with extended programming.

17



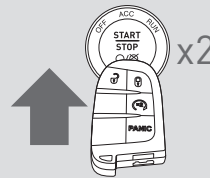
Connect remote starter to vehicle.

18



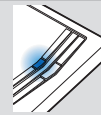
Close driver door.

19



Push start button twice [2x] with keyfob 1 to ON position. (No battery)

20



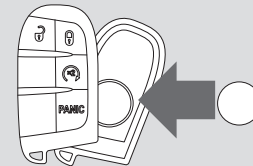
Wait, LED will turn solid BLUE for 2 seconds.

21



Push start button once [1x] to OFF position. Module Programming Procedure completed.

22



Insert battery in keyfob 1.

## WARNING: READ BEFORE REMOTE STARTING THE VEHICLE

### IMPORTANT

- I All OEM keyfobs must be at least 10 feet away from the vehicle. All vehicle doors must be closed and locked prior to remote start sequence. Failure to comply will result in remote starter malfunction.

## TAKE OVER PROCEDURE - TO THE VEHICLE OWNER

### NOTE

- I All vehicle doors must be closed and locked prior to remote start sequence.



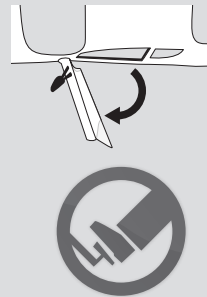
TIME RESTRICTION COMING UP !

1



Press UNLOCK on after-market remote.

2



**TIME RESTRICTION**  
Within 45 SECONDS from previous step:

Open vehicle door.  
Enter vehicle.  
Close vehicle door.

Press and release BRAKE pedal.

3

Take over procedure completed.



Failure to follow procedure within time restriction will result in vehicle engine shutdown.