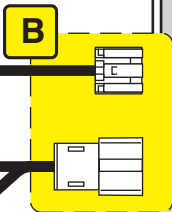
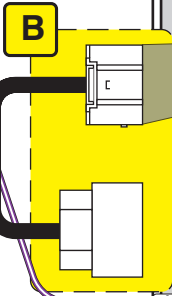


TLP4

D



Steering Lock Connector



Main Body ECU

violet/white

C

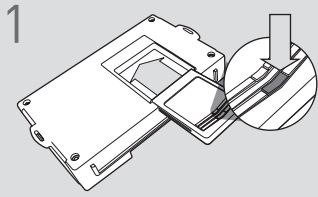


Códigos de error de programación de LED

- El LED del módulo parpadea en ROJO durante la programación
- 1x - No se detecta CAN, verifique las conexiones
 - 2x - VIN no leído, verifique las conexiones
 - 3x - VIN desconocido, plataforma de fuerza
 - 4x - Sin IMMO
 - 5x - Arrancador remoto OEM detectado, quitar
 - 6x - Plataforma clave detectada, verifique las conexiones
 - 7x - No se detecta RX, verifique las conexiones
 - 8x - No se detecta TX, verifique las conexiones

RECUPERACIÓN NO COMPATIBLE: EL VEHÍCULO SE APAGARÁ AL ABRIR LA PUERTA DEL CONDUCTOR.

CARTRIDGE INSTALLATION



1 Slide cartridge into unit. Notice button under LED.

2

Ready for Module Programming Procedure.

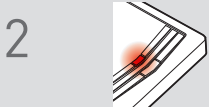
MODULE PROGRAMMING PROCEDURE

NOTE

Between each step, LED will turn solid RED, this is the default standby mode.



1 Push start button twice [2x] to ON position.



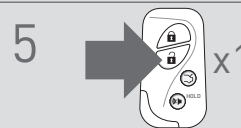
2 LED will turn solid RED.



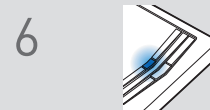
3 Within 5 seconds, LED will flash BLUE rapidly.



4 Push start button once [1x] to OFF position.



5 Press unlock button once [1x] on OEM keyfob.



6 Wait, LED will turn solid BLUE for 2 seconds.

7

Module Programming Procedure completed.

TAKEOVER NOT AVAILABLE