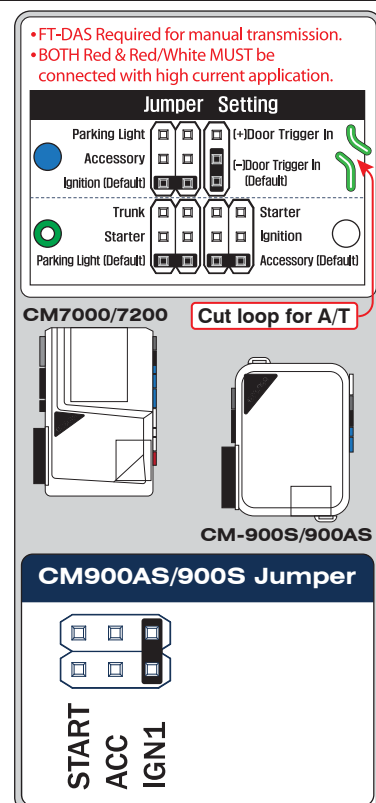
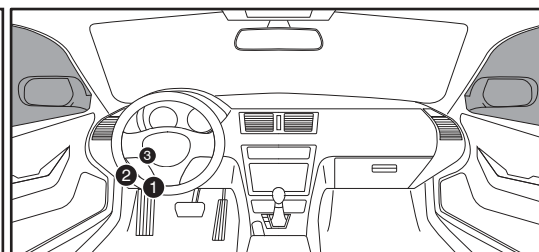
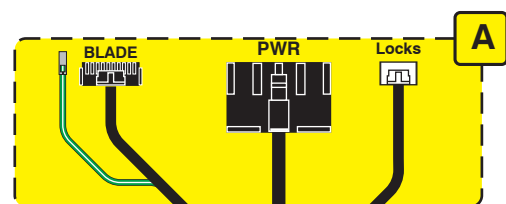
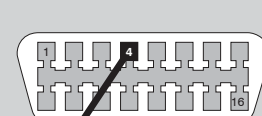
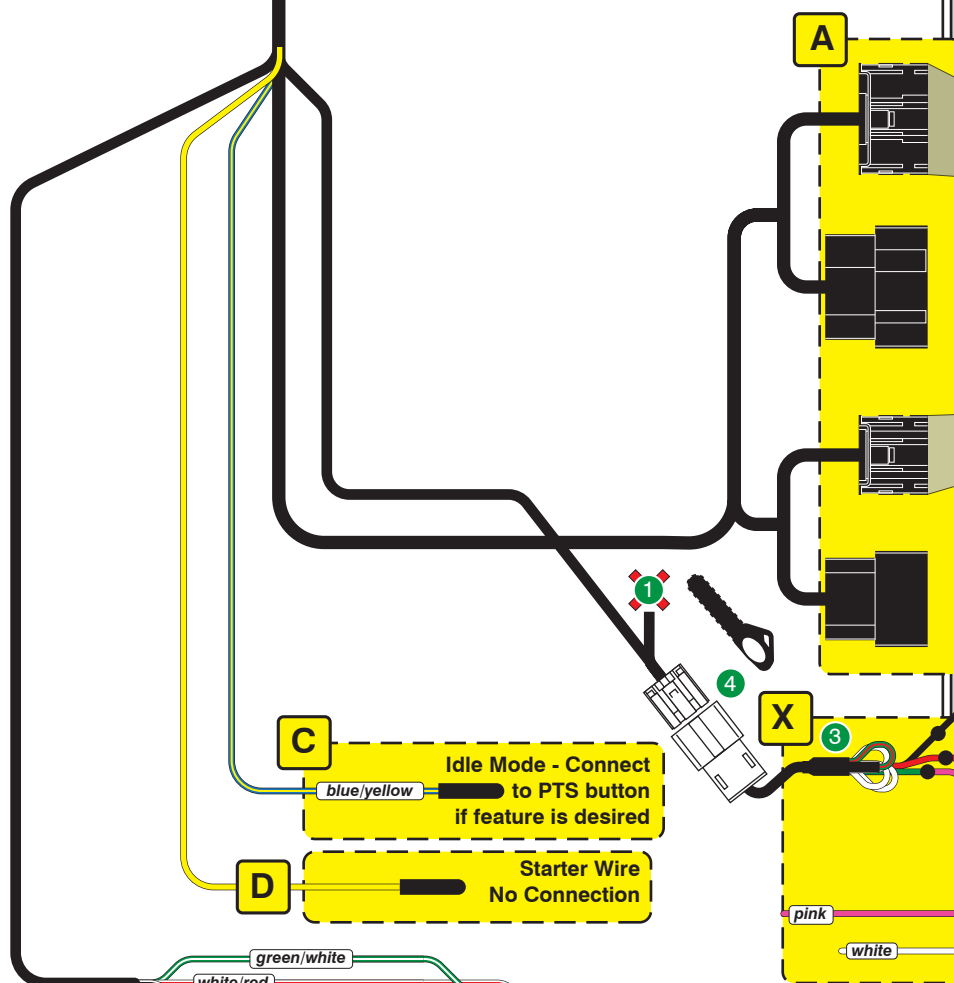


FIRSTECH, LLC.
SUPPORT - 1(888) 820-3690, EXT. 203



**OBD-II Connector****Main Body ECU**

C Idle Mode - Connect to PTS button if feature is desired

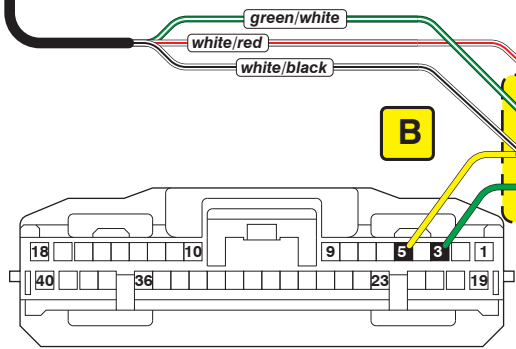
blue/yellow

D Starter Wire No Connection

B Autolight Shutdown Parking lights

colors vary

colors vary

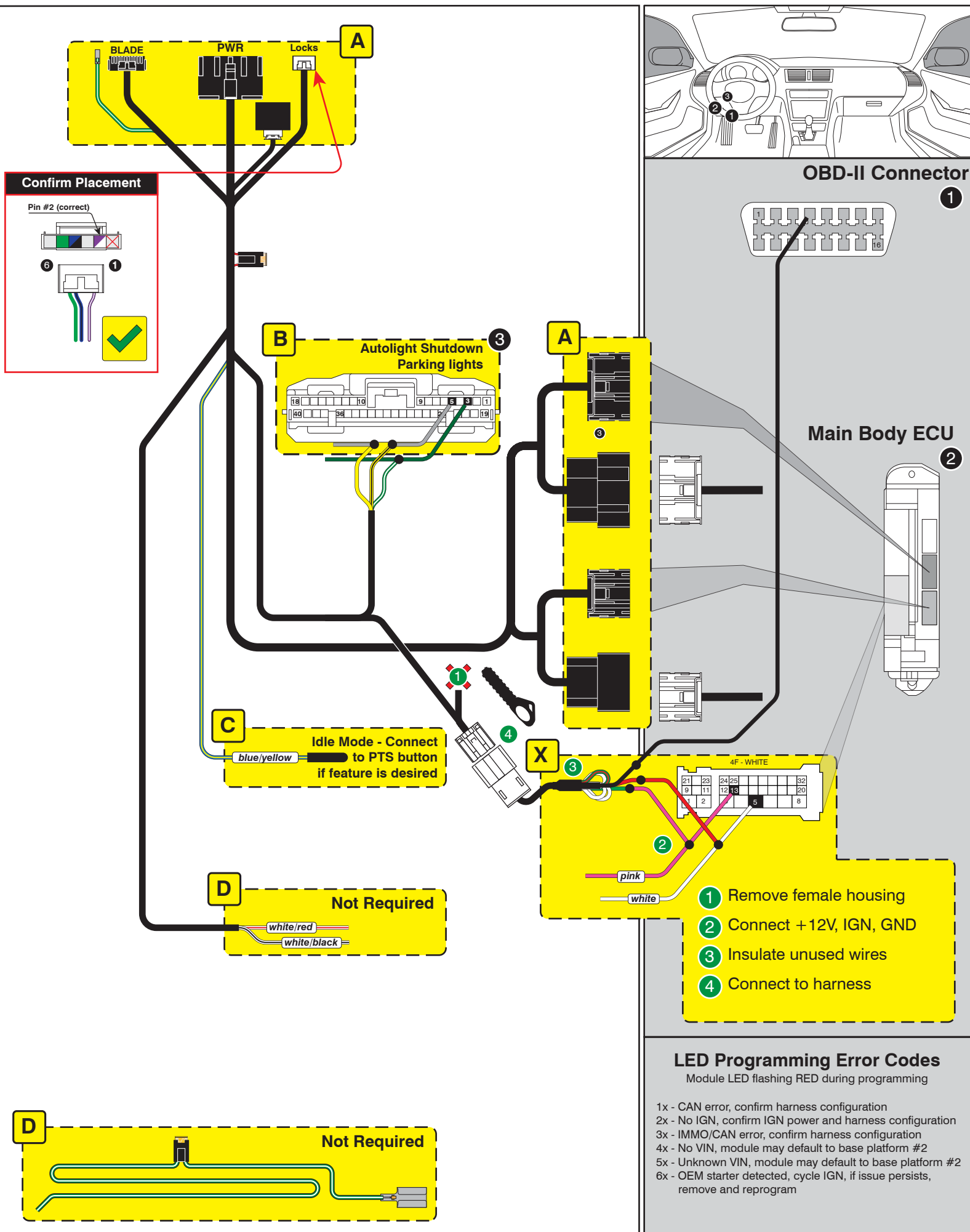


- 1 Remove female housing
- 2 Connect +12V, IGN, GND
- 3 Insulate unused wires
- 4 Connect to harness

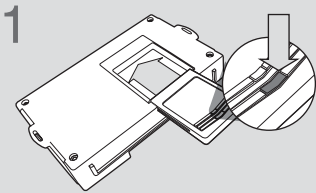
LED Programming Error Codes

Module LED flashing RED during programming

- 1x - CAN error, confirm harness configuration
- 2x - No IGN, confirm IGN power and harness configuration
- 3x - IMMO/CAN error, confirm harness configuration
- 4x - No VIN, module may default to base platform #2
- 5x - Unknown VIN, module may default to base platform #2
- 6x - OEM starter detected, cycle IGN, if issue persists, remove and reprogram



CARTRIDGE INSTALLATION



Slide cartridge into unit. Notice button under LED.

2

Ready for Module Programming Procedure.

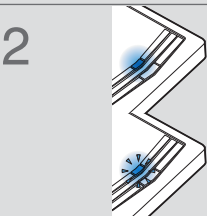
MODULE PROGRAMMING PROCEDURE

NOTE

I IMPORTANT: The hood must be closed.



Push start button twice [2x] to ON position.

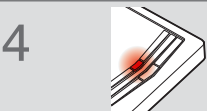


Wait, if LED turns solid BLUE for 2 seconds, proceed to step 7.

If LED flashes BLUE rapidly, proceed to step 3.



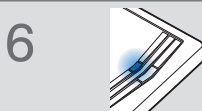
Push start button once [1x] to OFF position.



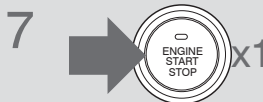
Wait, LED will turn solid RED. (This may take up to 5 minutes.)



Push start button twice [2x] to ON position.



Wait, LED will turn solid BLUE for 2 seconds



Push start button once [1x] to OFF position.

8

Module Programming Procedure completed.