

**FIRSTECH, LLC.**  
SUPPORT • 1(888) 820-3690, EXT. 203

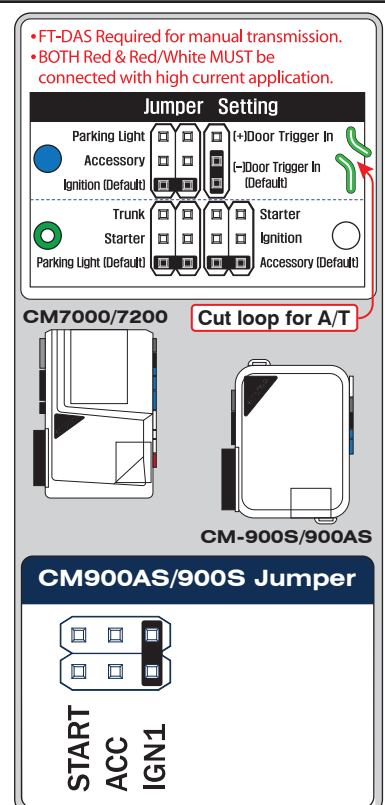
*Idle Mode is not a supported feature of the FTI-TLP2 Harness: The Idle Mode feature which allows the user to exit a running has been excluded from the FTI-TLP2 harness wiring. If this feature is desired, please refer to the full BLADE installation diagram for the applicable wiring and make the required connection to the vehicle PTS button.*

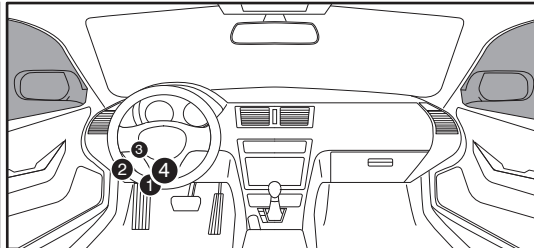
**TAKEOVER NOT SUPPORTED: THE VEHICLE WILL SHUT DOWN  
UPON OPENING DRIVER'S DOOR**

<b>X</b>	<b>MODIFICATION REQUIRED</b>
<b>A</b>	<b>CONNECTIONS REQUIRED</b>
<b>B</b>	<b>CONNECTIONS REQUIRED</b>
<b>C</b>	<b>OPTIONAL CONNECTION</b>
<b>D</b>	<b>CONNECTION REQUIRED</b>



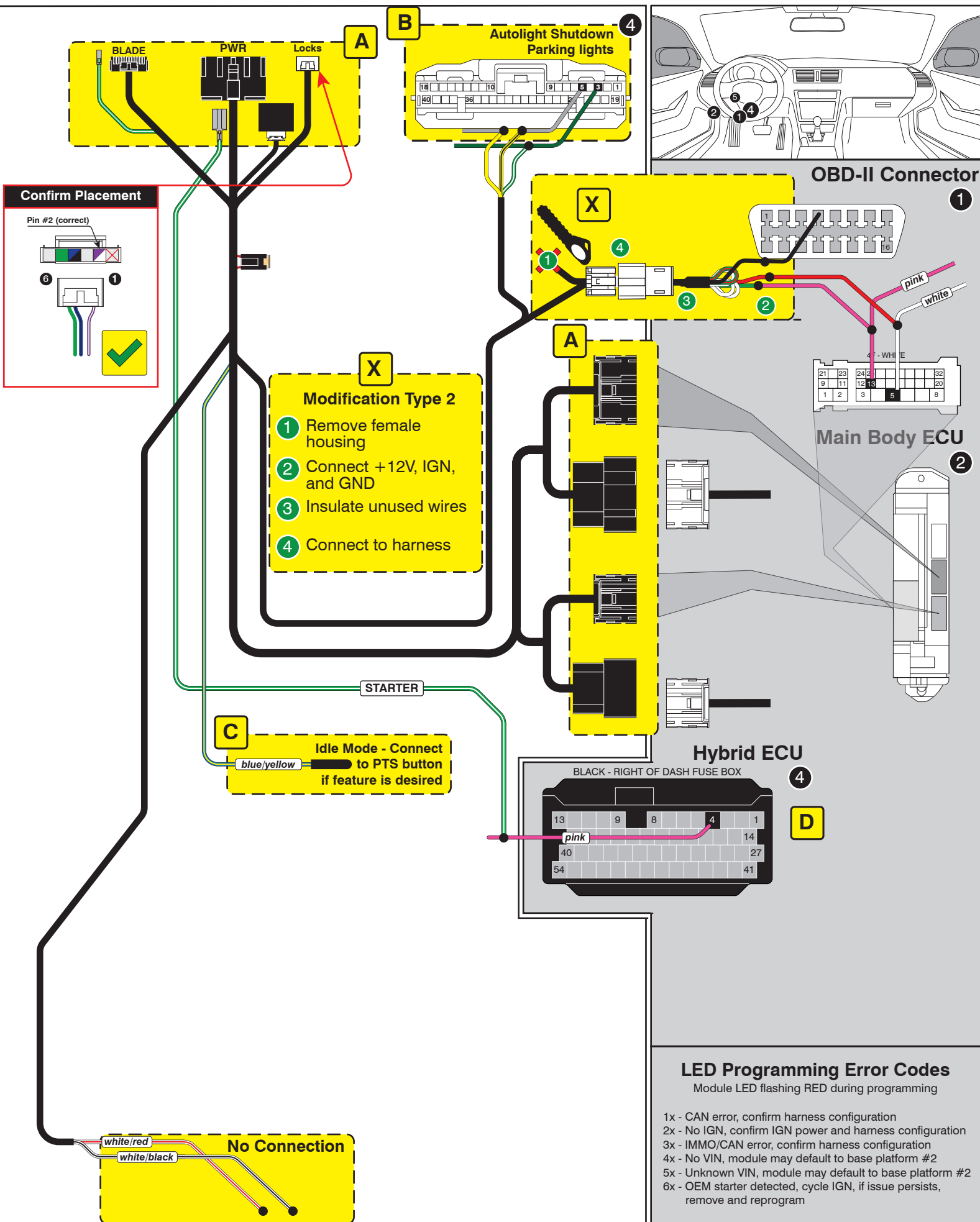
FEATURE COVERAGE	
IMMOBILIZER DATA	○
BOX LOCK REM START	○
TPMS CONTROL	○
ARM OEM ALARM	○
DISARM OEM ALARM	○
A/M ALARM CTRL FROM OEM REMOTE	○
A/M RS CONTROL FROM OEM REMOTE	○
PRIORITY UNLOCK	○
DOOR LOCK	○
DOOR UNLOCK	○
TRUNK/HATCH RELEASE	
DOOR STATUS OUT	○
TRUNK STATUS OUT	○
TACHOMETER OUT	
BRAKE STATUS OUT	○
E-BRAKE STATUS	○
PARKING LIGHTS	○
AUTOLIGHT CONTROL	○



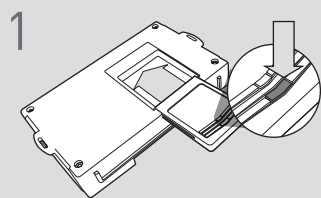


Module LED flashing RED during programming

- 1x - CAN error, confirm harness configuration
- 2x - No IGN, confirm IGN power and harness configuration
- 3x - IMMO/CAN error, confirm harness configuration
- 4x - No VIN, module may default to base platform #2
- 5x - Unknown VIN, module may default to base platform #2
- 6x - OEM starter detected, cycle IGN, if issue persists, remove and reprogram



## CARTRIDGE INSTALLATION



Slide cartridge into unit. Notice button under LED.

2

Ready for Module Programming Procedure.

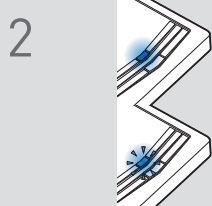
## MODULE PROGRAMMING PROCEDURE

### NOTE

I IMPORTANT: The hood must be closed.



Push start button twice [2x] to ON position.

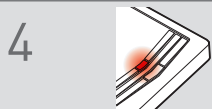


Wait, if LED turns solid BLUE for 2 seconds, proceed to step 7.

If LED flashes BLUE rapidly, proceed to step 3.



Push start button once [1x] to OFF position.



Wait, LED will turn solid RED. (This may take up to 5 minutes.)



Push start button twice [2x] to ON position.



Wait, LED will turn solid BLUE for 2 seconds.



Push start button once [1x] to OFF position.

8

Module Programming Procedure completed.