

FTI-TLP2: Vehicle Coverage and Preparation Notes

MAKE	MODEL	YEAR	INSTALL	PTS	LIGHTS	STARTER	DCM	I/O CHANGES
DL-TL7 Toyota	Camry PTS AT	2023	Type 1X	Optional	Park / Auto Type 1	No	No	Green White/Blue n/a

This installation requires **BLADE-AL(DL)-TL7** firmware, flash module and update controller before beginning the installation.

Install Type 1X: Main Body ECU (driver side kick panel), steering lock connector, no DCM interface required.

Page. 2: Version 1 harness, yellow starter wire (no connection)

Page. 3: Version 2 harness, green/white starter/parking light wire (no connection), white/red & white/black (no connection)

Harness Modification Required: Remove the female housing of the SLC connector at the 'Y' of the SLC harness extension, ensure that none of the cut wires are shorting together, insulate and secure. Connect harness **red** to 12V (white, pin 1) of the 1-pin power connector, and **pink** to IGN (purple, pin 13) of the white 32-pin connector of the Main Body ECU, as illustrated.

Connect harness **black** to chassis ground, harness **green/red** and the remaining **white** wires are not connected, insulate and secure for safety.

Lights: Parking light and auto-light control are handled using the pre-terminated **green/white** wire bundled with the BLADE connector. Remove the (-) pk light wire from the controller's gray I/O connector and replace with the one specified, for status and diagnostic reporting. Connect to the headlight switch connector [B] as illustrated.

Locks: This installation type requires additional connections to the vehicle door locks to ensure proper synchronization with the OEM remotes. **The 6-pin lock connector is required for correct operation.** Connect to the control module lock output port.

Blue/Yellow (PTS): The PTS wire (blue/yellow) is optional. If Idle Mode is not desired, trim as necessary, then insulate and secure.

Idle Mode is not a supported feature of the FTI-TLP2 Harness: The Idle Mode feature which allows the user to exit a running has been excluded from the FTI-TLP2 harness wiring. If this feature is desired, please refer to the full BLADE installation diagram for the applicable wiring and make the required connection to the vehicle PTS button.

TAKEOVER NOT SUPPORTED: THE VEHICLE WILL SHUT DOWN UPON OPENING DRIVER'S DOOR

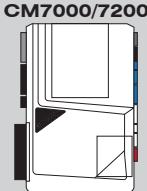
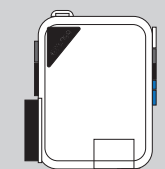
FTI-TLP2: Installation and Configuration Notes

- A** CONNECTIONS REQUIRED
- B** CONNECTIONS REQUIRED
- C** OPTIONAL CONNECTION
- D** NOT REQUIRED
- X** REQUIRED MODIFICATION


- FT-DAS Required for manual transmission.
- BOTH Red & Red/White MUST be connected with high current application.

Jumper Setting					
Parking Light	<input type="checkbox"/>	<input type="checkbox"/>	<input type="checkbox"/>	(+)Door Trigger In	<input type="checkbox"/>
Accessory	<input type="checkbox"/>	<input type="checkbox"/>	<input type="checkbox"/>	(-)Door Trigger In	<input type="checkbox"/>
Ignition (Default)	<input type="checkbox"/>	<input type="checkbox"/>	<input type="checkbox"/>		<input type="checkbox"/>
Trunk	<input type="checkbox"/>	<input type="checkbox"/>	<input type="checkbox"/>	Starter	<input type="checkbox"/>
Starter	<input type="checkbox"/>	<input type="checkbox"/>	<input type="checkbox"/>	Ignition	<input type="checkbox"/>
Parking Light (Default)	<input type="checkbox"/>	<input type="checkbox"/>	<input type="checkbox"/>	Accessory (Default)	<input type="checkbox"/>

CM7000/7200 Cut loop for A/T

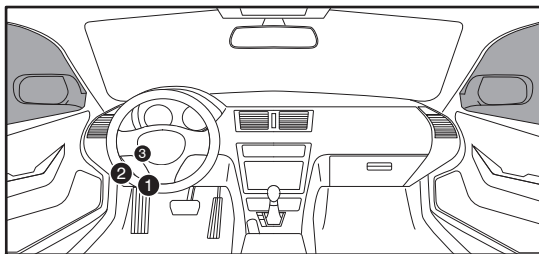
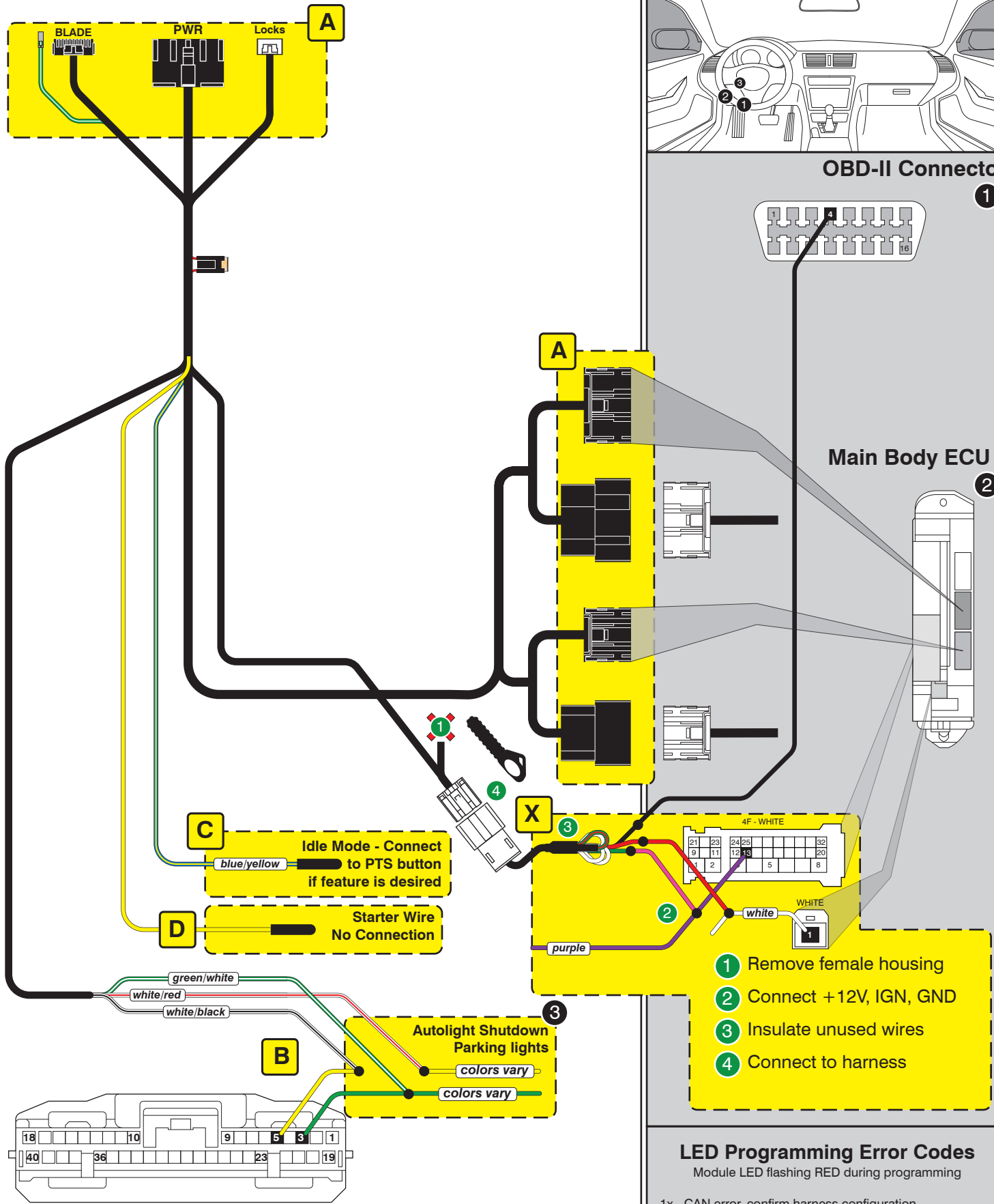



CM900AS/900S Jumper





FEATURE COVERAGE																																							
IMMOBILIZER DATA	<input type="checkbox"/>	3X LOCK REM START	<input type="checkbox"/>	PTS CONTROL	<input type="checkbox"/>	ARM OEM ALARM	<input type="checkbox"/>	DISARM OEM ALARM	<input type="checkbox"/>	A/M ALARM CTRL FROM OEM REMOTE	<input type="checkbox"/>	A/M RS CONTROL FROM OEM REMOTE	<input type="checkbox"/>	PRIORITY UNLOCK	<input type="checkbox"/>	DOOR LOCK	<input type="checkbox"/>	DOOR UNLOCK	<input type="checkbox"/>	TRUNK/HATCH RELEASE	<input type="checkbox"/>	DOOR STATUS OUT	<input type="checkbox"/>	TRUNK STATUS OUT	<input type="checkbox"/>	TACHOMETER OUT	<input type="checkbox"/>	BRAKE STATUS OUT	<input type="checkbox"/>	E-BRAKE STATUS	<input type="checkbox"/>	PARKING LIGHTS	<input type="checkbox"/>	AUTOLIGHT CONTROL	<input type="checkbox"/>		<input type="checkbox"/>		<input type="checkbox"/>



OBD-II Connector

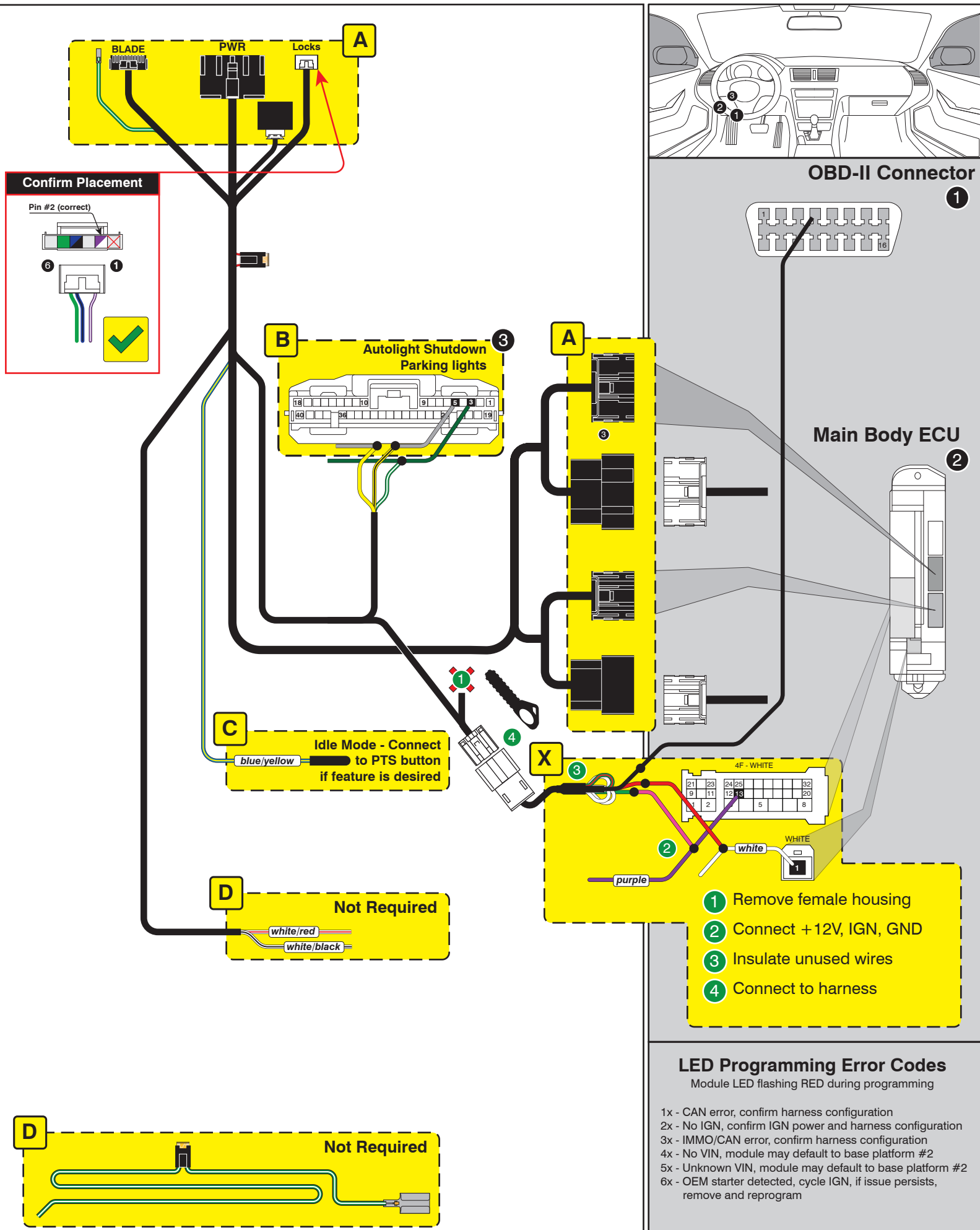
Main Body ECU

- 1 Remove female housing
- 2 Connect +12V, IGN, GND
- 3 Insulate unused wires
- 4 Connect to harness

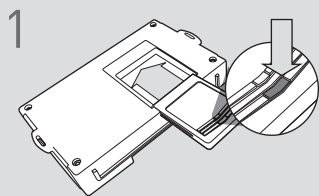
LED Programming Error Codes

Module LED flashing RED during programming

- 1x - CAN error, confirm harness configuration
- 2x - No IGN, confirm IGN power and harness configuration
- 3x - IMMO/CAN error, confirm harness configuration
- 4x - No VIN, module may default to base platform #2
- 5x - Unknown VIN, module may default to base platform #2
- 6x - OEM starter detected, cycle IGN, if issue persists, remove and reprogram



CARTRIDGE INSTALLATION



1 Slide cartridge into unit. Notice button under LED.

2

Ready for Module Programming Procedure.

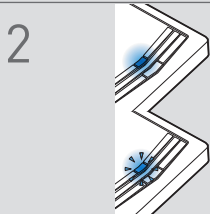
MODULE PROGRAMMING PROCEDURE

NOTE

I IMPORTANT: The hood must be closed.



1 Push start button twice [2x] to ON position.

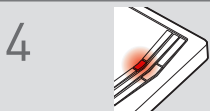


2 Wait, if LED turns solid BLUE for 2 seconds, proceed to step 7.

If LED flashes BLUE rapidly, proceed to step 3.



3 Push start button once [1x] to OFF position.



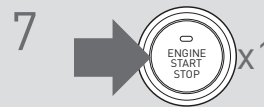
4 Wait, LED will turn solid RED. (This may take up to 5 minutes.)



5 Push start button twice [2x] to ON position.



6 Wait, LED will turn solid BLUE for 2 seconds.



7 Push start button once [1x] to OFF position.

8

Module Programming Procedure completed.