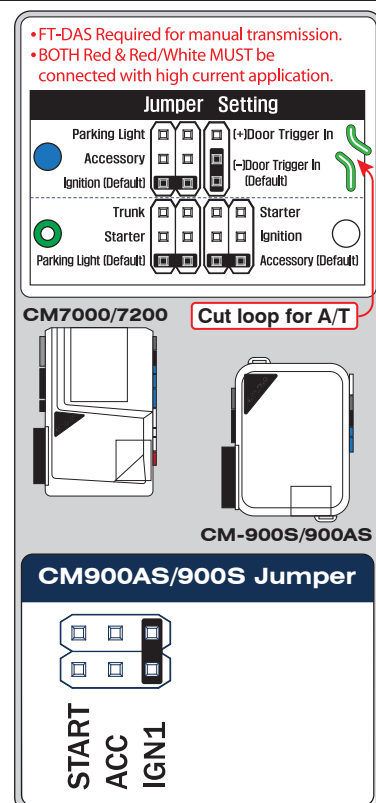


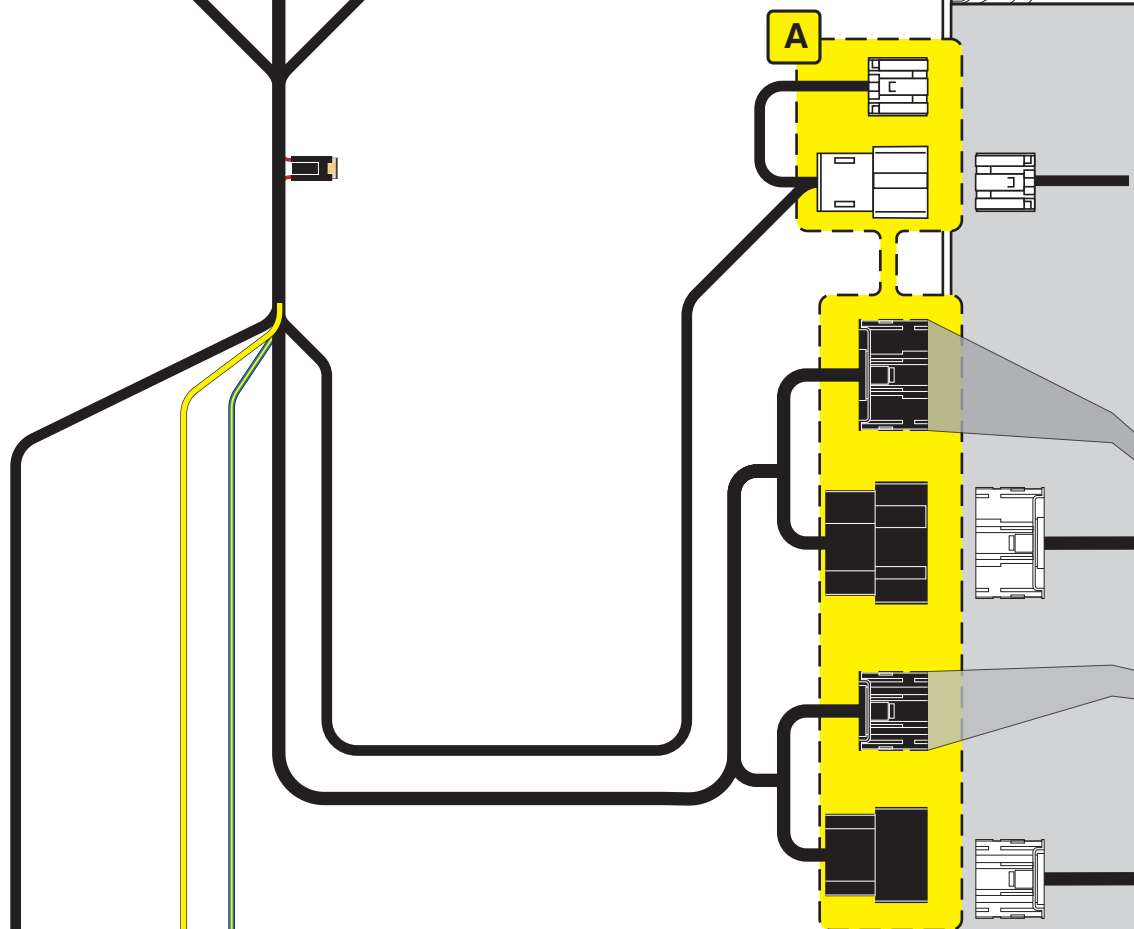
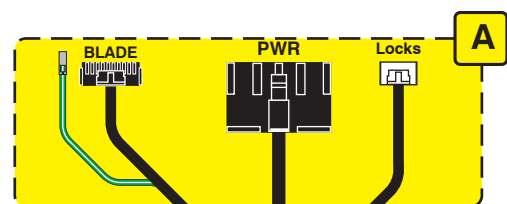
**FIRSTECH, LLC.**  
SUPPORT • 1(888) 820-3690, EXT. 203

*Idle Mode is not a supported feature of the FTI-TLP2 Harness: The Idle Mode feature which allows the user to exit a running has been excluded from the FTI-TLP2 harness wiring. If this feature is desired, please refer to the full BLADE installation diagram for the applicable wiring and make the required connection to the vehicle PTS button.*

**TAKEOVER NOT SUPPORTED: THE VEHICLE WILL SHUT DOWN  
UPON OPENING DRIVER'S DOOR**

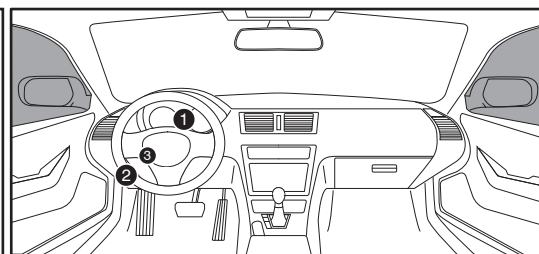
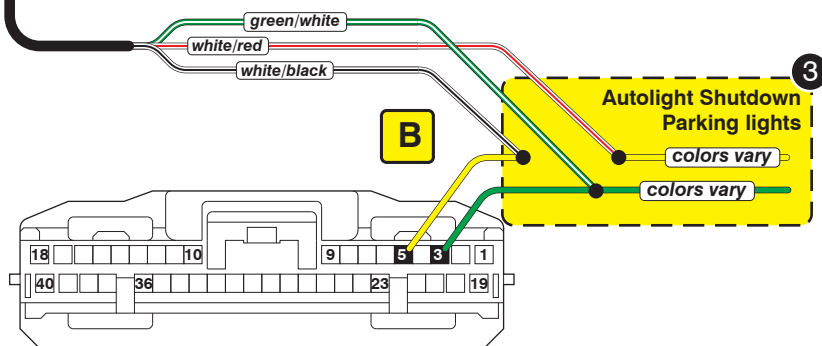
FEATURE COVERAGE	
IMMOBILIZER DATA	●
2X LOCK REM START	●
2PTS CONTROL	●
ARM OEM ALARM	●
DISARM OEM ALARM	●
A/M ALARM CTRL FROM OEM REMOTE	●
A/M RS CONTROL FROM OEM REMOTE	●
PRIORITY UNLOCK	●
DOOR LOCK	●
DOOR UNLOCK	●
TRUNK/HATCH RELEASE	●
DOOR STATUS OUT	●
TRUNK STATUS OUT	●
TACHOMETER OUT	●
BRAKE STATUS OUT	●
E-BRAKE STATUS	●
PARKING LIGHTS	●
AUTOLIGHT CONTROL	●





**C** Idle Mode - Connect  
blue/yellow to PTS button  
if feature is desired

**D** Starter Wire  
No Connection



Steering Lock Connector

1

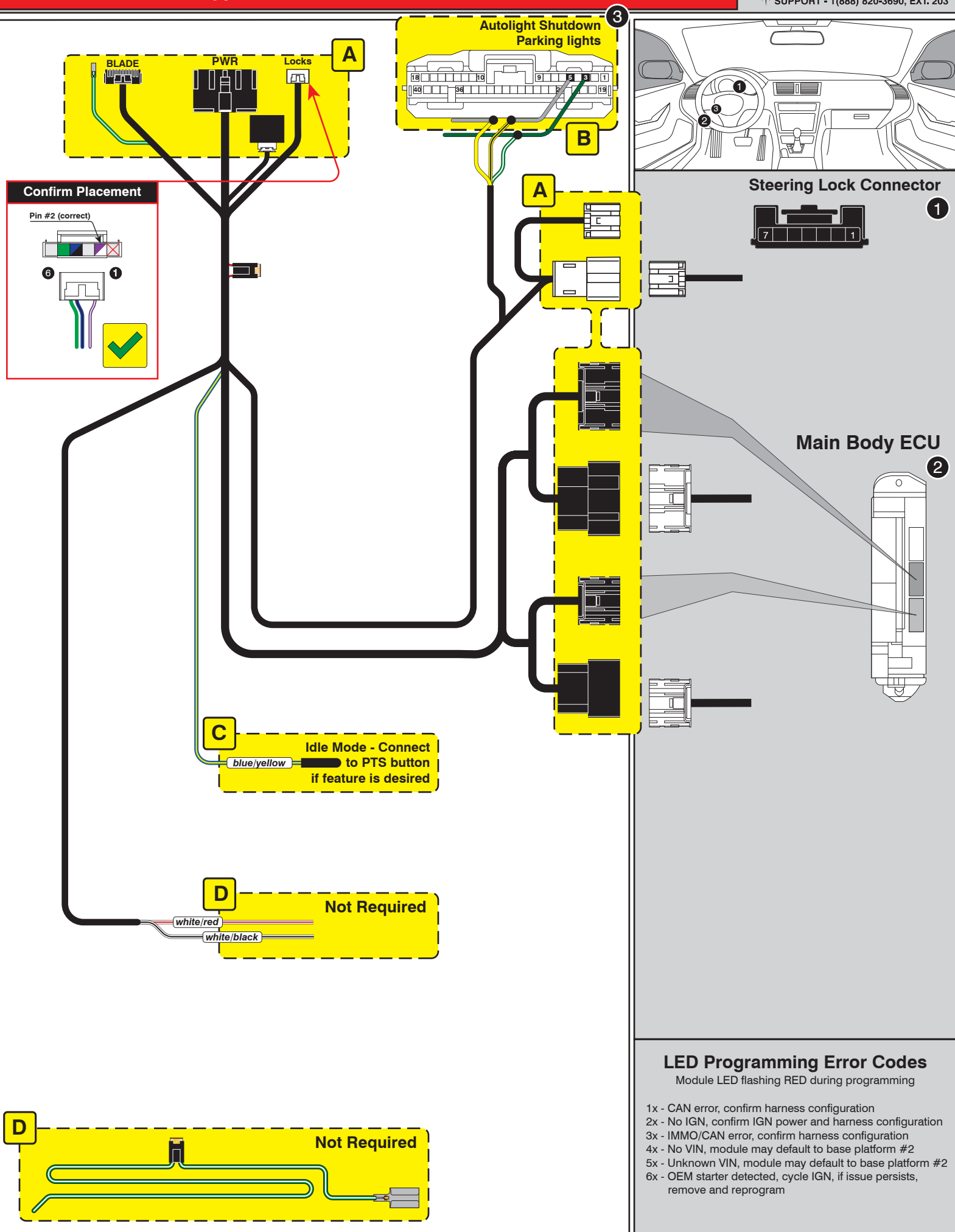
Main Body ECU

2

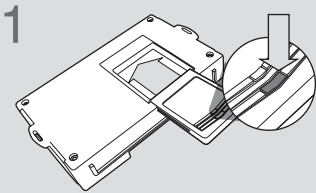
## LED Programming Error Codes

Module LED flashing RED during programming

- 1x - CAN error, confirm harness configuration
- 2x - No IGN, confirm IGN power and harness configuration
- 3x - IMMO/CAN error, confirm harness configuration
- 4x - No VIN, module may default to base platform #2
- 5x - Unknown VIN, module may default to base platform #2
- 6x - OEM starter detected, cycle IGN, if issue persists, remove and reprogram



CARTRIDGE INSTALLATION



Slide cartridge into unit. Notice button under LED.

2

Ready for Module Programming Procedure.

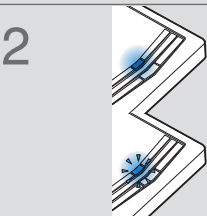
MODULE PROGRAMMING PROCEDURE

NOTE

I IMPORTANT: The hood must be closed.



Push start button twice [2x] to ON position.

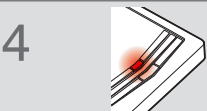


Wait, if LED turns solid BLUE for 2 seconds, proceed to step 7.

If LED flashes BLUE rapidly, proceed to step 3.



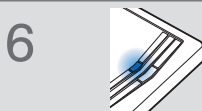
Push start button once [1x] to OFF position.



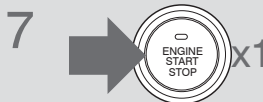
Wait, LED will turn solid RED. (This may take up to 5 minutes.)



Push start button twice [2x] to ON position.



Wait, LED will turn solid BLUE for 2 seconds



Push start button once [1x] to OFF position.

8

Module Programming Procedure completed.