

FIRSTECH, LLC.
SUPPORT - 1(888) 820-3690, EXT. 203

Idle Mode is not a supported feature of the FTI-TLP2 Harness: The Idle Mode feature which allows the user to exit a running has been excluded from the FTI-TLP2 harness wiring. If this feature is desired, please refer to the full BLADE installation diagram for the applicable wiring and make the required connection to the vehicle PTS button.

**TAKEOVER NOT SUPPORTED: THE VEHICLE WILL SHUT DOWN
UPON OPENING DRIVER'S DOOR**

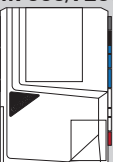

E CONNECTION REQUIRED



• FT-DAS Required for manual transmission.
 • BOTH Red & Red/White MUST be connected with high current application.


Jumper Setting			
Parking Light			(+1Door Trigger In
Accessory			(-1Door Trigger In
Ignition (Default)			(Default)
Trunk			Starter
Starter			Ignition
Parking Light (Default)			Accessory (Default)

CM7000/7200
 Cut loop for A/T

CM-900S/900AS

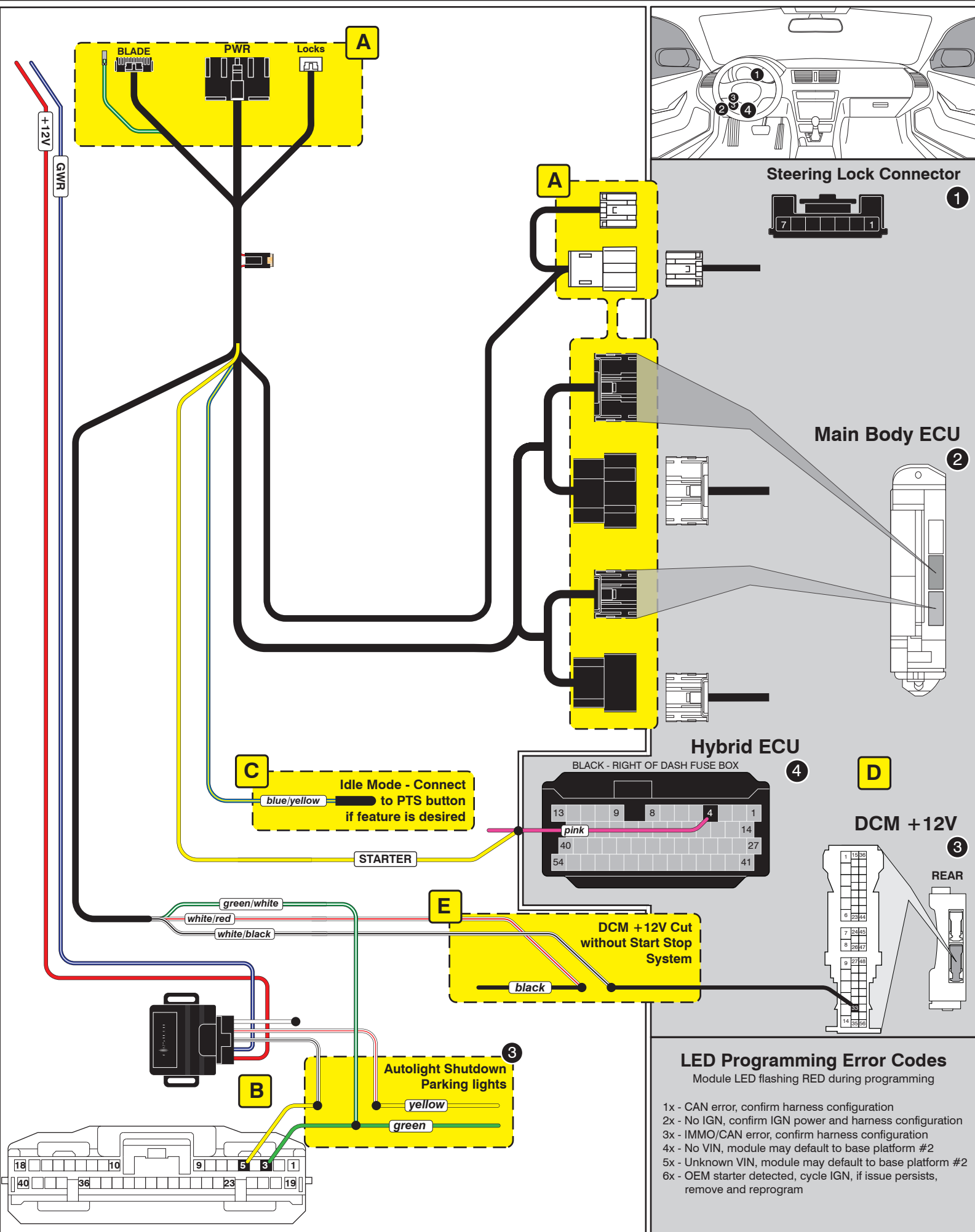
CM900AS/900S Jumper



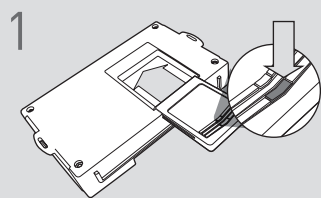
START

ACC

IGN1



CARTRIDGE INSTALLATION



Slide cartridge into unit. Notice button under LED.

2

Ready for Module Programming Procedure.

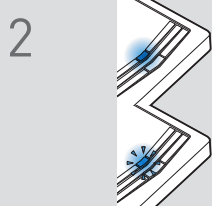
MODULE PROGRAMMING PROCEDURE

NOTE

I IMPORTANT: The hood must be closed.



Push start button twice [2x] to ON position.

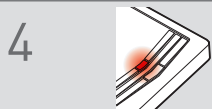


Wait, if LED turns solid BLUE for 2 seconds, proceed to step 7.

If LED flashes BLUE rapidly, proceed to step 3.



Push start button once [1x] to OFF position.



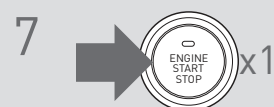
Wait, LED will turn solid RED. (This may take up to 5 minutes.)



Push start button twice [2x] to ON position.



Wait, LED will turn solid BLUE for 2 seconds.



Push start button once [1x] to OFF position.

8

Module Programming Procedure completed.