

# FTI-TLP2: Vehicle Coverage and Preparation Notes

| MAKE             | MODEL                    | YEAR    | INSTALL | PTS      | LIGHTS                | STARTER | DCM | I/O CHANGES             |
|------------------|--------------------------|---------|---------|----------|-----------------------|---------|-----|-------------------------|
| DL-TL7<br>Toyota | Corolla Hatchback PTS AT | 2019-20 | Type 1  | Optional | Park / Auto<br>Type 1 | No      | No  | Green White/Blue<br>n/a |

This installation requires **BLADE-AL(DL)-TL7** firmware, flash module and update controller before beginning the installation.

**Install Type 1:** Main Body ECU (driver side kick panel), steering lock connector, no DCM interface required.

**CAN:** Vehicle CAN data is gathered through connections at the Main Body ECU, no other connections are required.

**Lights:** Parking light and auto-light control are handled using the pre-terminated **green/white** wire bundled with the BLADE connector. Remove the (-) pk light wire from the controller's gray I/O connector and replace with the one specified, for status and diagnostic reporting. Connect to the headlight switch connector [B] as illustrated.

**Locks:** This installation type requires additional connections to the vehicle door locks to ensure proper synchronization with the OEM remotes. **The 6-pin lock connector is required for correct operation.** Connect to the control module lock output port.

**Yellow (starter):** The starter wire (yellow) is not used in this install, trim as necessary, then insulate and secure.

**Blue/Yellow (PTS):** The PTS wire (blue/yellow) is optional. If Idle Mode is not desired, trim as necessary, then insulate and secure.

*Idle Mode is not a supported feature of the FTI-TLP2 Harness: The Idle Mode feature which allows the user to exit a running has been excluded from the FTI-TLP2 harness wiring. If this feature is desired, please refer to the full BLADE installation diagram for the applicable wiring and make the required connection to the vehicle PTS button.*

## TAKEOVER NOT SUPPORTED: THE VEHICLE WILL SHUT DOWN UPON OPENING DRIVER'S DOOR

### FTI-TLP2: Installation and Configuration Notes

- A CONNECTIONS REQUIRED
- B CONNECTIONS REQUIRED
- C OPTIONAL CONNECTION
- D NOT REQUIRED



| FEATURE COVERAGE |                   |             |               |                  |                                |                                |                 |           |             |                     |                 |                  |                |                  |                |                |                   |  |  |  |  |  |  |
|------------------|-------------------|-------------|---------------|------------------|--------------------------------|--------------------------------|-----------------|-----------|-------------|---------------------|-----------------|------------------|----------------|------------------|----------------|----------------|-------------------|--|--|--|--|--|--|
| IMMOBILIZER DATA | 3X LOCK REM START | PTS CONTROL | ARM OEM ALARM | DISARM OEM ALARM | A/M ALARM CTRL FROM OEM REMOTE | A/M RS CONTROL FROM OEM REMOTE | PRIORITY UNLOCK | DOOR LOCK | DOOR UNLOCK | TRUNK/HATCH RELEASE | DOOR STATUS OUT | TRUNK STATUS OUT | TACHOMETER OUT | BRAKE STATUS OUT | E-BRAKE STATUS | PARKING LIGHTS | AUTOLIGHT CONTROL |  |  |  |  |  |  |

- FT-DAS Required for manual transmission.
- BOTH Red & Red/White MUST be connected with high current application.

Jumper Setting

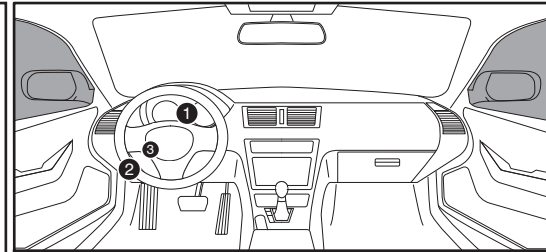
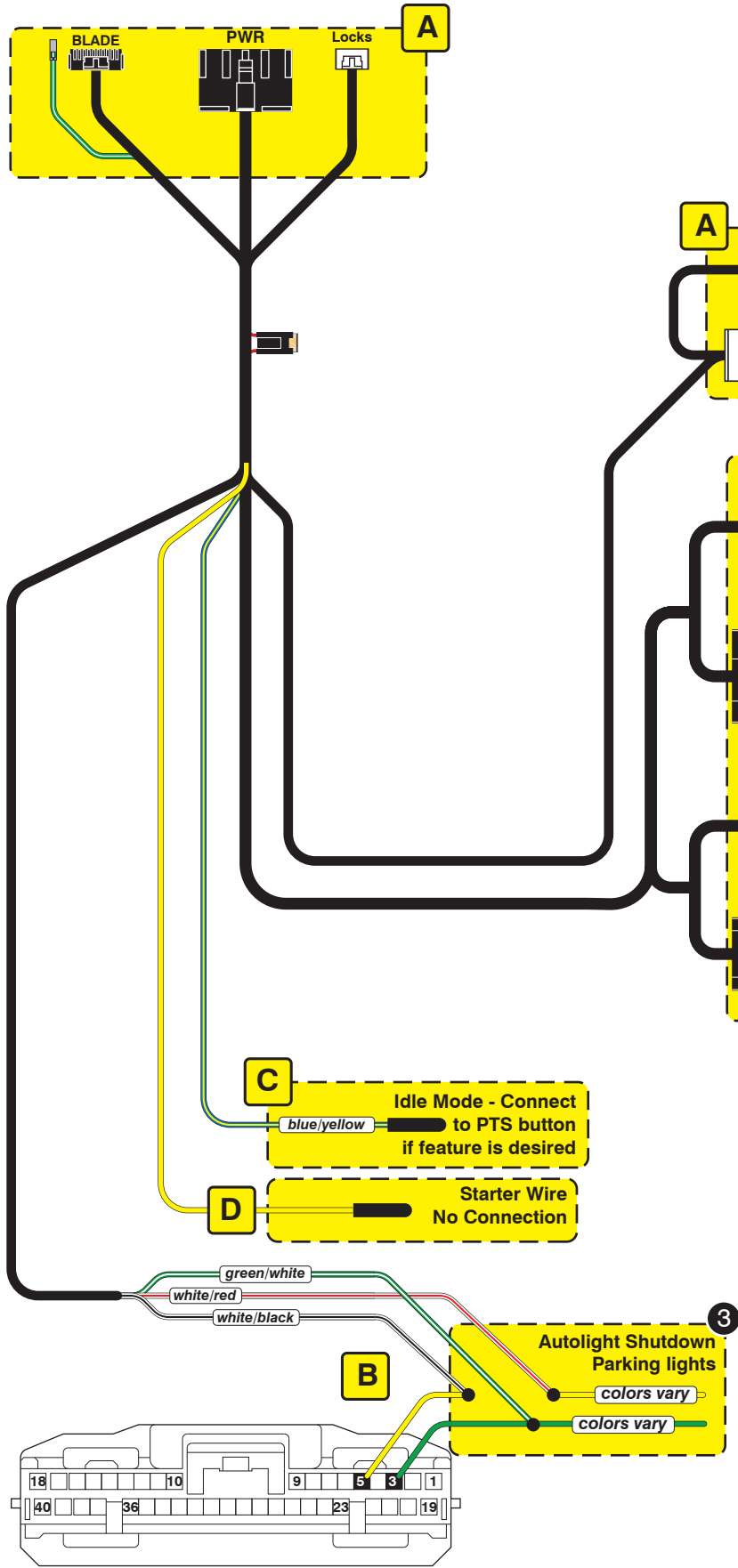
|                          |                          |                          |                          |                          |                          |                               |                               |                          |                          |
|--------------------------|--------------------------|--------------------------|--------------------------|--------------------------|--------------------------|-------------------------------|-------------------------------|--------------------------|--------------------------|
| Parking Light            | Accessory                | Ignition (Default)       | Trunk                    | Starter                  | Parking Light (Default)  | (+)-Door Trigger In (Default) | (-)-Door Trigger In (Default) | Starter Ignition         | Accessory (Default)      |
| <input type="checkbox"/> | <input type="checkbox"/> | <input type="checkbox"/> | <input type="checkbox"/> | <input type="checkbox"/> | <input type="checkbox"/> | <input type="checkbox"/>      | <input type="checkbox"/>      | <input type="checkbox"/> | <input type="checkbox"/> |

**CM7000/7200** Cut loop for A/T

**CM-900S/900AS**

CM900AS/900S Jumper

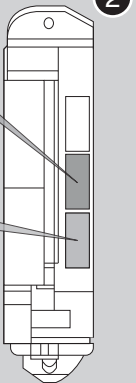
START  
ACC  
IGN1



Steering Lock Connector



Main Body ECU

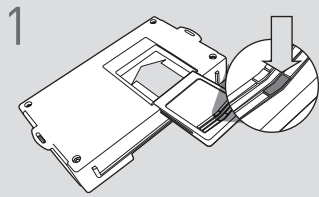


### LED Programming Error Codes

Module LED flashing RED during programming

- 1x - CAN error, confirm harness configuration
- 2x - No IGN, confirm IGN power and harness configuration
- 3x - IMMO/CAN error, confirm harness configuration
- 4x - No VIN, module may default to base platform #2
- 5x - Unknown VIN, module may default to base platform #2
- 6x - OEM starter detected, cycle IGN, if issue persists, remove and reprogram

## CARTRIDGE INSTALLATION



1 Slide cartridge into unit. Notice button under LED.

2

Ready for Module Programming Procedure.

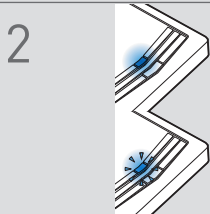
## MODULE PROGRAMMING PROCEDURE

### NOTE

I IMPORTANT: The hood must be closed.



1 Push start button twice [2x] to ON position.

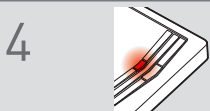


2 Wait, if LED turns solid BLUE for 2 seconds, proceed to step 7.

If LED flashes BLUE rapidly, proceed to step 3.



3 Push start button once [1x] to OFF position.



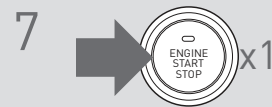
4 Wait, LED will turn solid RED. (This may take up to 5 minutes.)



5 Push start button twice [2x] to ON position.



6 Wait, LED will turn solid BLUE for 2 seconds.



7 Push start button once [1x] to OFF position.

8

Module Programming Procedure completed.