

# FTI-TLP2: Vehicle Coverage and Preparation Notes

MAKE	MODEL	YEAR	INSTALL	PTS	LIGHTS	STARTER	DCM	I/O CHANGES
DL-TL7 Lexus	ES 250 PTS AT	2021	Type 1	Optional	Park / Auto Type 1	No	No	Green White/Blue n/a

This installation requires **BLADE-AL(DL)-TL7** firmware, flash module and update controller before beginning the installation.

**Install Type 1:** Main Body ECU (driver side kick panel), steering lock connector, no DCM interface required.

**CAN:** Vehicle CAN data is gathered through connections at the Main Body ECU, no other connections are required.

**Lights:** Parking light and auto-light control are handled using the pre-terminated **green/white** wire bundled with the BLADE connector. Remove the (-) pk light wire from the controller's gray I/O connector and replace with the one specified, for status and diagnostic reporting. Connect to the headlight switch connector [B] as illustrated.

**Locks:** This installation type requires additional connections to the vehicle door locks to ensure proper synchronization with the OEM remotes. **The 6-pin lock connector is required for correct operation.** Connect to the control module lock output port.

**Yellow (starter):** The starter wire (yellow) is not used in this install, trim as necessary, then insulate and secure.

**Blue/Yellow (PTS):** The PTS wire (blue/yellow) is optional. If Idle Mode is not desired, trim as necessary, then insulate and secure.

*Idle Mode is not a supported feature of the FTI-TLP2 Harness: The Idle Mode feature which allows the user to exit a running has been excluded from the FTI-TLP2 harness wiring. If this feature is desired, please refer to the full BLADE installation diagram for the applicable wiring and make the required connection to the vehicle PTS button.*

## TAKEOVER NOT SUPPORTED: THE VEHICLE WILL SHUT DOWN UPON OPENING DRIVER'S DOOR

### FTI-TLP2: Installation and Configuration Notes

- A CONNECTIONS REQUIRED
- B CONNECTIONS REQUIRED
- C OPTIONAL CONNECTION
- D NOT REQUIRED



FEATURE COVERAGE																							
IMMOBILIZER DATA	3X LOCK REM START	PTS CONTROL	ARM OEM ALARM	DISARM OEM ALARM	A/M ALARM CTRL FROM OEM REMOTE	A/M RS CONTROL FROM OEM REMOTE	PRIORITY UNLOCK	DOOR LOCK	DOOR UNLOCK	TRUNK/HATCH RELEASE	DOOR STATUS OUT	TRUNK STATUS OUT	TACHOMETER OUT	BRAKE STATUS OUT	E-BRAKE STATUS	PARKING LIGHTS	AUTOLIGHT CONTROL						

- FT-DAS Required for manual transmission.
- BOTH Red & Red/White MUST be connected with high current application.

Jumper Setting

Parking Light Accessory Ignition (Default)	(+)Door Trigger In (-)Door Trigger In (Default)
Trunk Starter Parking Light (Default)	Starter Ignition Accessory (Default)

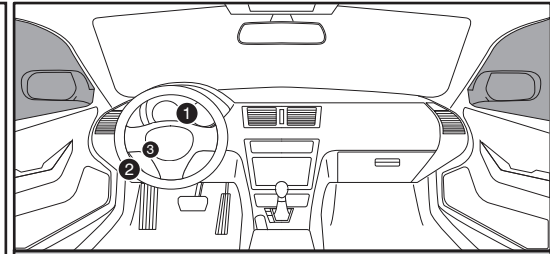
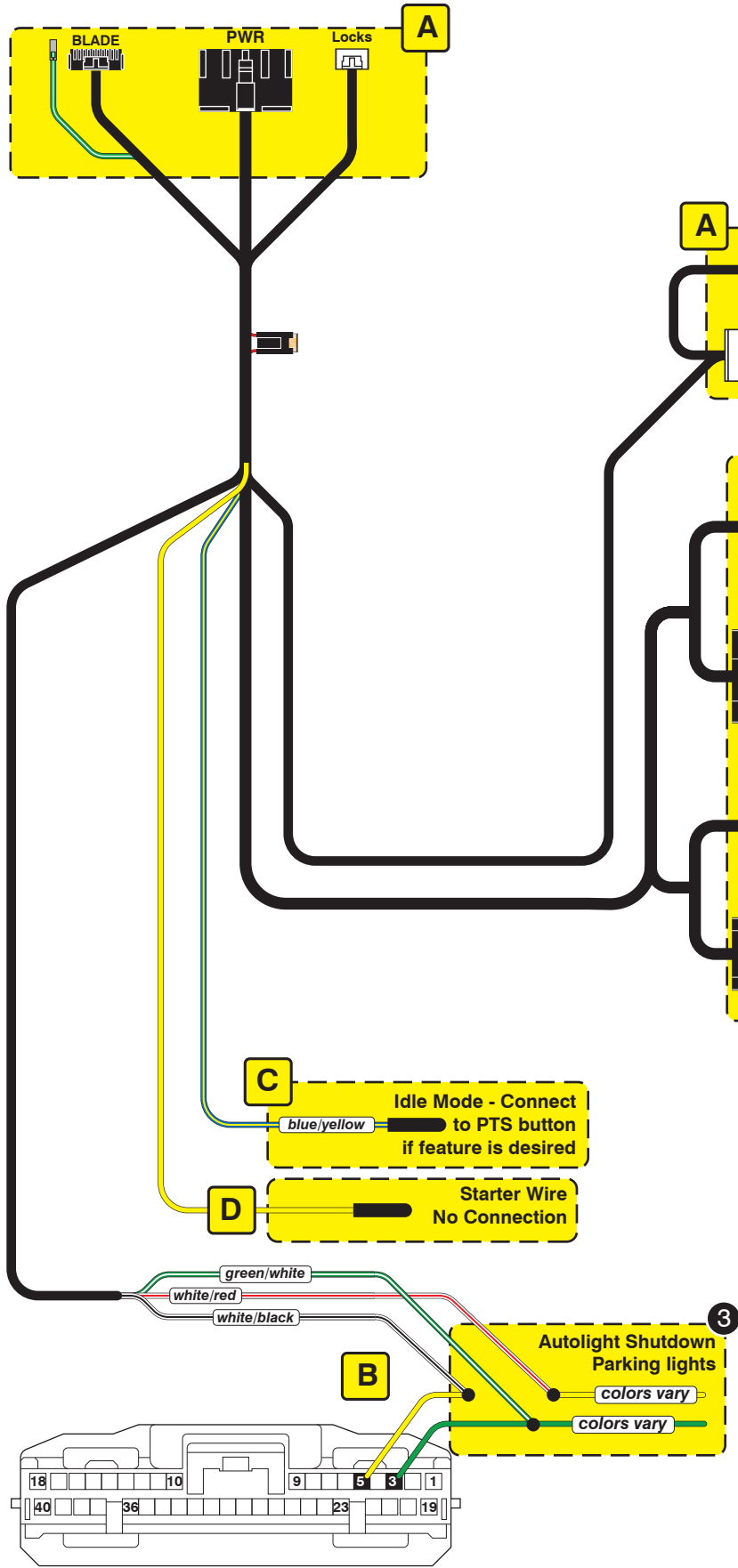
CM7000/7200

Cut loop for A/T

CM-900S/900AS

CM900AS/900S Jumper

START  
ACC  
IGN1



Steering Lock Connector



Main Body ECU

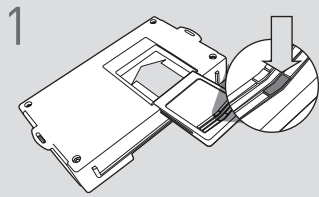


### LED Programming Error Codes

Module LED flashing RED during programming

- 1x - CAN error, confirm harness configuration
- 2x - No IGN, confirm IGN power and harness configuration
- 3x - IMMO/CAN error, confirm harness configuration
- 4x - No VIN, module may default to base platform #2
- 5x - Unknown VIN, module may default to base platform #2
- 6x - OEM starter detected, cycle IGN, if issue persists, remove and reprogram

## CARTRIDGE INSTALLATION



1 Slide cartridge into unit. Notice button under LED.

2

Ready for Module Programming Procedure.

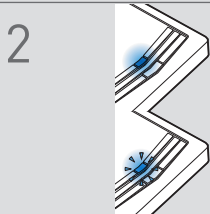
## MODULE PROGRAMMING PROCEDURE

### NOTE

I IMPORTANT: The hood must be closed.



1 Push start button twice [2x] to ON position.

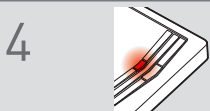


2 Wait, if LED turns solid BLUE for 2 seconds, proceed to step 7.

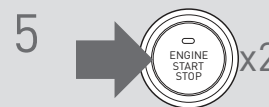
If LED flashes BLUE rapidly, proceed to step 3.



3 Push start button once [1x] to OFF position.



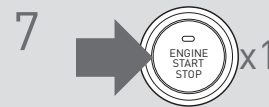
4 Wait, LED will turn solid RED. (This may take up to 5 minutes.)



5 Push start button twice [2x] to ON position.



6 Wait, LED will turn solid BLUE for 2 seconds.



7 Push start button once [1x] to OFF position.

8

Module Programming Procedure completed.