

Make	Model	Year	Install	CAN	Lights	BCM	POC	I/O Changes
DL-NI3 Nissan	Maxima Intelli-Key PTS AT	2016-22	Type 3	Type A	Park / Auto POC 1 Hazard1/2	BIC	See note	Green White/Blue None/None

Install Type 3 requires **BLADE-AL(DL)-NI3** firmware, flash module and update the controller firmware before installing.

CAN: The NSP2 harness, when configured for NI3 applications, does not require a specific configuration of the harness CAN connector, the NI3 CAN connections are hardwired between the **white** 14-pin connector and the Black 40-pin BCM connector.

Lights: Visual status confirmations and diagnostic information are provided via hazard lights when using the NSP2 harness. The controller **POC1** output must be configured for one of the following settings (depending on switch type):

- * **Hazard light [30]** *momentary hazard switch*
- * **Hazard light 2 [23]** *latching hazard switch*

POC Configuration:

CM7/CMX: **POC2 - 2nd START [2]**
 POC3 - 2nd IGN [3]

CM9: **POC3 - (-) START**
 POC4 - (-) IGNITION

I/O Changes: Type 3 requires no configuration of the CN1 blue wire, make no connection or configuration changes.

Vehicle Damage Warning:

Caution should be taken to avoid mixing up the BCM connectors, vehicle damage will result if the connectors are positioned improperly. It is advised that you make the BCM connections one at a time, confirming that each T-harness connection is at the correct BCM position before proceeding to the next connection, attempting to program, or attempting to remote start.

FTI-NSP2: Installation and Configuration Notes

- A** REQUIRED CONNECTIONS - SECURE UNUSED I/O CONNECTORS
- B** REQUIRED CONNECTIONS - SEE WARNING ABOVE
- C** REQUIRED CONNECTION
- D** NO CONNECTION
- E** NOT REQUIRED



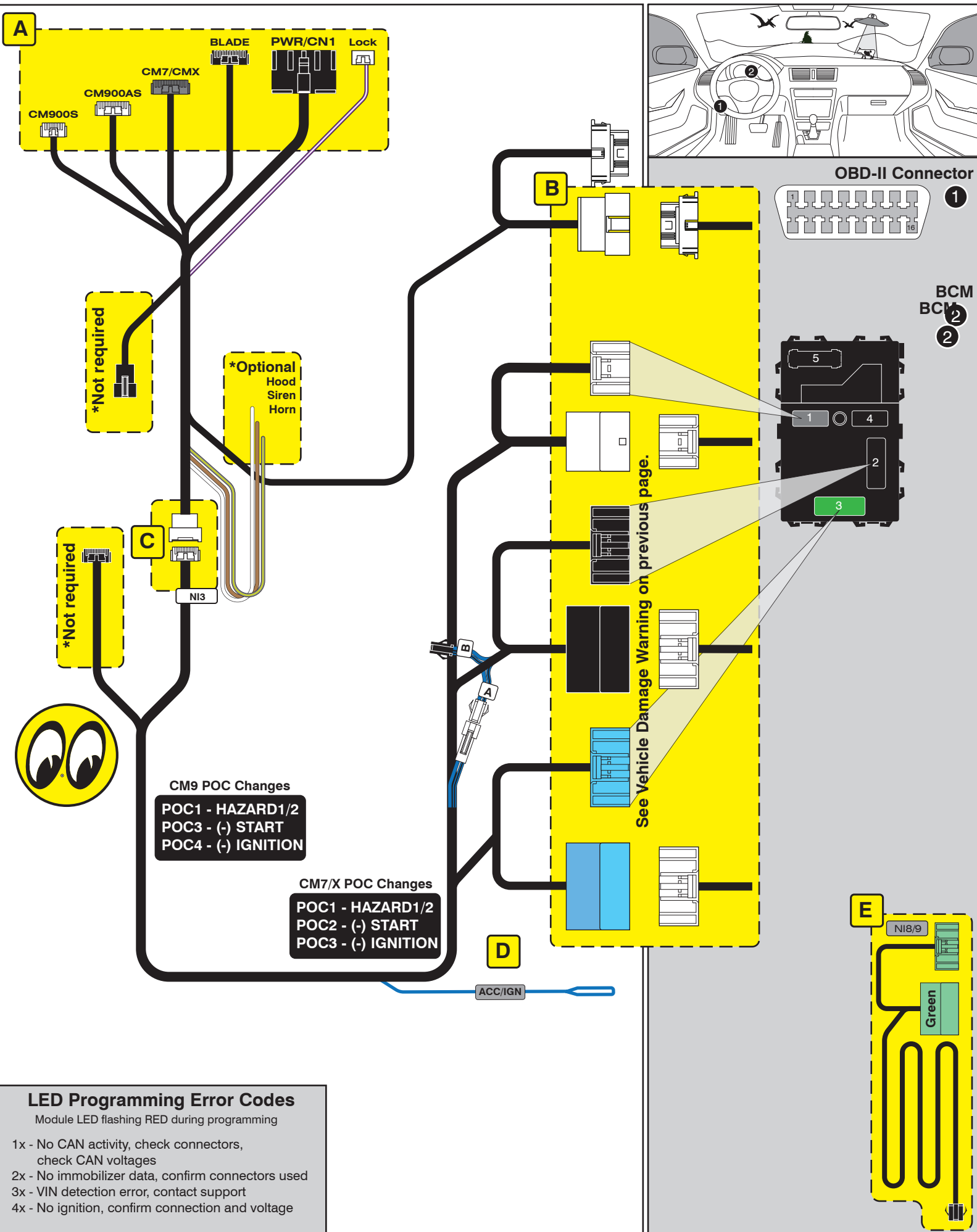
FEATURE COVERAGE														
IMMOBILIZER DATA	SECURE TAKEOVER	PRIORITY UNLOCK	DOOR LOCK	DOOR UNLOCK	ARM OEM ALARM	DISARM OEM ALARM	POWER LIFTGATE	TRUNK/HATCH RELEASE	DOOR STATUS	HOOD STATUS	TRUNK STATUS	BRAKE STATUS	TACH OUTPUT	E-BRAKE STATUS
○	○	○	○	○	○	○	○	○	○	○	○	○	○	○

•FT-DAS Required for manual transmission.
•BOTH Red & Red/White MUST be connected with high current application.

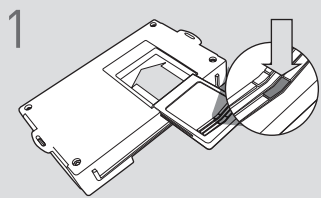
Jumper Setting

CM7000/7200 **Cut loop for A/T**

CM900AS/900S Jumper



CARTRIDGE INSTALLATION



1 Slide cartridge into unit. Notice button under LED.

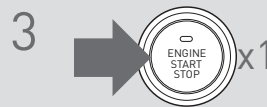
2

Ready for Module Programming Procedure.

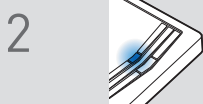
MODULE PROGRAMMING PROCEDURE



1 Push start button twice [2x] to ON position.



3 Push start button once [1x] to OFF position.



2 Wait, LED will turn solid BLUE for 2 seconds.

4

Module Programming Procedure completed.

PUSH TO START VEHICLE TAKE OVER PROCEDURE - TO THE VEHICLE OWNER

NOTE

- I This procedure is to be followed during remote starter runtime prior to entering vehicle.
- II All vehicle doors must be closed.

1



Press UNLOCK on after-market remote or OEM fob.

2



Open vehicle door.

Enter vehicle WITH THE OEM FOB.

Close vehicle door.

3



OR

Wait for the LED indicator of the push button to be in the ON position.

OR

Wait for the ORANGE LED indicator of the push button to turn on.

4



Press and release BRAKE pedal.

5



It is safe to select gear ONLY AFTER LED indicator is in ON position.

6

Push to Start vehicle take over procedure completed.



Failure to follow procedure may result in vehicle displaying CHECK ENGINE or TIRE PRESSURE error messages.