

**CM9 POC Changes**  
 POC1 - HAZARD1/2  
 POC3 - (-) START  
 POC4 - (-) IGNITION

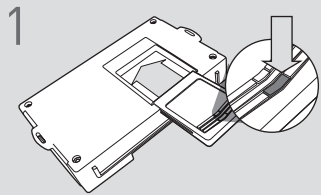
**CM7/X POC Changes**  
 POC1 - HAZARD1/2  
 POC2 - (-) START  
 POC3 - (-) IGNITION

**CN1 - Blue (ACC)**  
 CM9 - Jumper to ACC  
 CM7 - Jumper 2 to ACC  
 CMX - HCP3 to ACC [4]

**Códigos de error de programación de LED**  
 El LED del módulo parpadea en ROJO durante la programación

- 1x - Sin actividad CAN, comprobar conectores, comprobar los voltajes CAN
- 2x - No hay datos del inmovilizador, confirme los conectores usados
- 3x - Error de detección de VIN, póngase en contacto con el soporte
- 4x - Sin encendido, confirme la conexión y el voltaje

## CARTRIDGE INSTALLATION

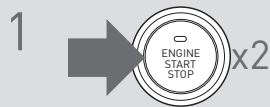


1 Slide cartridge into unit. Notice button under LED.

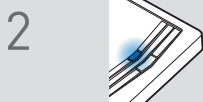
2

Ready for Module Programming Procedure.

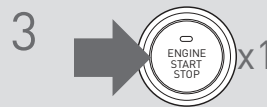
## MODULE PROGRAMMING PROCEDURE



1 Push start button twice [2x] to ON position.



2 Wait, LED will turn solid BLUE for 2 seconds.



3 Push start button once [1x] to OFF position.

4

Module Programming Procedure completed.

## PUSH TO START VEHICLE TAKE OVER PROCEDURE - TO THE VEHICLE OWNER

### NOTE

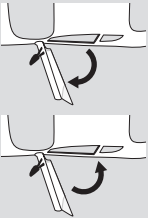
- I This procedure is to be followed during remote starter runtime prior to entering vehicle.
- II All vehicle doors must be closed.

1



Press UNLOCK on after-market remote or OEM fob.

2



Open vehicle door.

Enter vehicle WITH THE OEM FOB.

Close vehicle door.

3



Wait for the LED indicator of the push button to be in the ON position.

OR

Wait for the ORANGE LED indicator of the push button to turn on.

4



Press and release BRAKE pedal.

5



It is safe to select gear ONLY AFTER LED indicator is in ON position.

6

Push to Start vehicle take over procedure completed.



Failure to follow procedure may result in vehicle displaying CHECK ENGINE or TIRE PRESSURE error messages.