

LED Programming Error Codes

Module LED flashing RED during programming

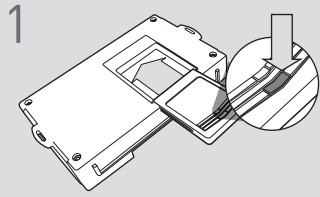
- 1x - No CAN activity, check connectors/CAN voltage
- 2x - Klon data error, confirm S-NET connection
- 3x - No S-NET data, confirm connection
- 4x - No VIN, confirm CAN connections and vehicle entered when flashing

After Klon:

- Solid red LED - redo part 1 of Klon
- 2x - Klon data is wrong, confirm data connection, start over from the beginning

Takeover not supported: Vehicle engine will shut down when doors are opened.

CARTRIDGE INSTALLATION

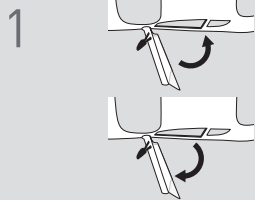


1 Slide cartridge into unit. Notice button under LED.

2

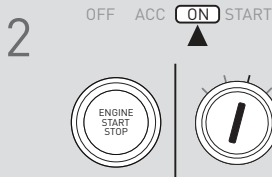
Ready for Module Programming Procedure.

MODULE PROGRAMMING PROCEDURE



1 Close driver door.

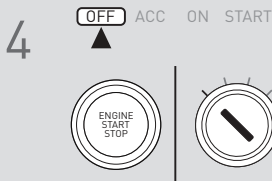
Re-open driver door to wake up data bus.



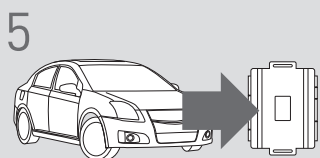
2 Turn ignition to ON position.



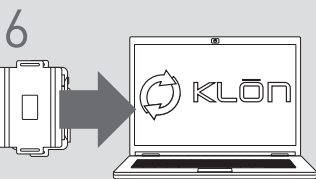
3 Wait, LED will flash BLUE rapidly.



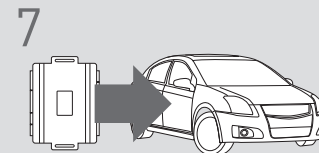
4 Turn ignition to OFF position.



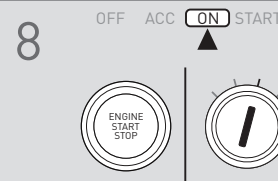
5 **WARNING:**
Disconnect power last.
Disconnect RS from vehicle.



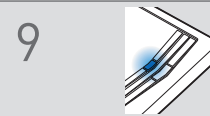
6 Connect RS to computer and proceed with extended programming.



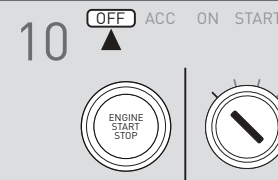
7 **WARNING:** Do not press RS programming button.
Connect power first.
Connect RS to vehicle.



8 Turn ignition to ON position.



9 Wait, LED will turn solid BLUE for 2 seconds.



10 Turn ignition to OFF position.



11 Press UNLOCK on the OEM remote.

! If the vehicle is equipped with a power liftgate: Open and close the power liftgate with the OEM keyfob.

12

Module Programming Procedure completed.