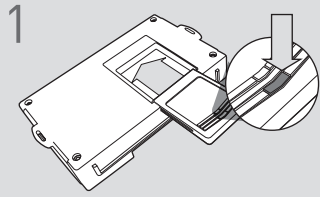


**Adquisición no admitida: El motor del vehículo se apagará cuando se abran las puertas.**

**Códigos de error de programación de LED**  
El LED del módulo parpadea en ROJO durante la programación

- 1x - Error de CAN, comprobar conectores
- 2x - Error de Klon, comprobar conexiones, reintentar la programación si el error persiste, realice un flash de borrado y luego vuelva a intentarlo programación con todas las puertas cerradas
- 3x - Error del inmovilizador, verifique los conectores, confirme que el automóvil arranca
- 4x - Error de VIN, verifique los conectores, vuelva a parpadear usando la entrada del vehículo

## CARTRIDGE INSTALLATION

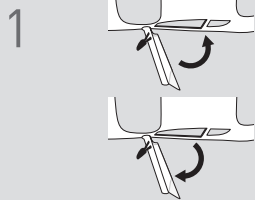


1 Slide cartridge into unit. Notice button under LED.

2

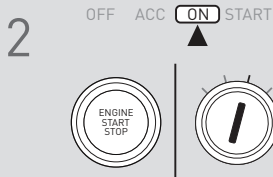
Ready for Module Programming Procedure.

## MODULE PROGRAMMING PROCEDURE

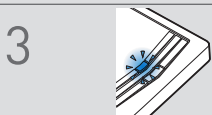


1 Close driver door.

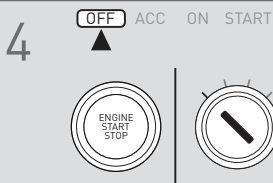
Re-open driver door to wake up data bus.



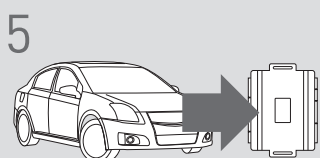
2 Turn ignition to ON position.



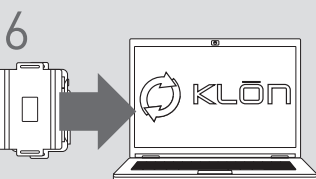
3 Wait, LED will flash BLUE rapidly.



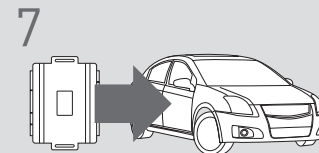
4 Turn ignition to OFF position.



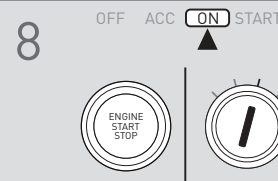
5 **WARNING:**  
Disconnect power last.  
Disconnect RS from vehicle.



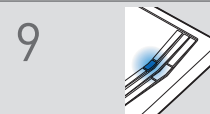
6 Connect RS to computer and proceed with extended programming.



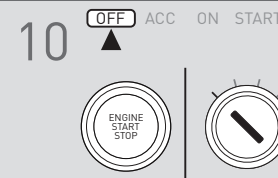
7 **WARNING:** Do not press RS programming button.  
Connect power first.  
Connect RS to vehicle.



8 Turn ignition to ON position.



9 Wait, LED will turn solid BLUE for 2 seconds.



10 Turn ignition to OFF position.



11 Press UNLOCK on the OEM remote.

**!** If the vehicle is equipped with a power liftgate: Open and close the power liftgate with the OEM keyfob.

12

Module Programming Procedure completed.