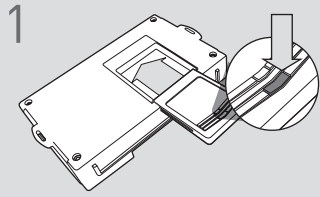


Adquisición no admitida: El motor del vehículo se apagará cuando se abran las puertas.

Códigos de error de programación de LED
El LED del módulo parpadea en ROJO durante la programación

- 1x - Error de CAN, comprobar conectores
- 2x - Error de Klon, comprobar conexiones, reintentar la programación si el error persiste, realice un flash de borrado y luego vuelva a intentarlo programación con todas las puertas cerradas
- 3x - Error del inmovilizador, verifique los conectores, confirme que el automóvil arranca
- 4x - Error de VIN, verifique los conectores, vuelva a parpadear usando la entrada del vehículo

CARTRIDGE INSTALLATION

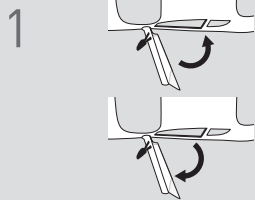


1 Slide cartridge into unit. Notice button under LED.

2

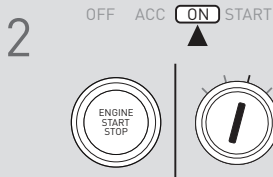
Ready for Module Programming Procedure.

MODULE PROGRAMMING PROCEDURE



1 Close driver door.

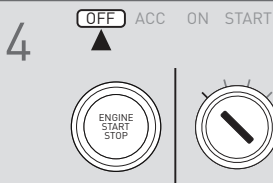
Re-open driver door to wake up data bus.



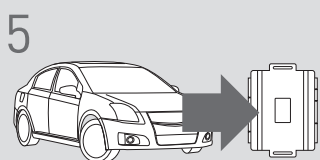
2 Turn ignition to ON position.



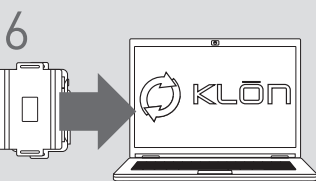
3 Wait, LED will flash BLUE rapidly.



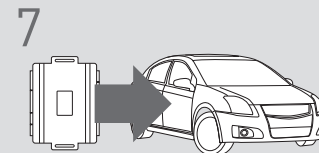
4 Turn ignition to OFF position.



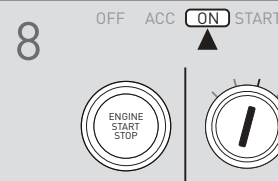
5 **WARNING:**
Disconnect power last.
Disconnect RS from vehicle.



6 Connect RS to computer and proceed with extended programming.



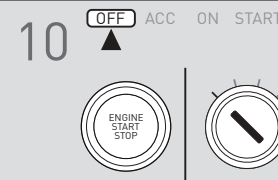
7 **WARNING:** Do not press RS programming button.
Connect power first.
Connect RS to vehicle.



8 Turn ignition to ON position.



9 Wait, LED will turn solid BLUE for 2 seconds.



10 Turn ignition to OFF position.



11 Press UNLOCK on the OEM remote.

! If the vehicle is equipped with a power liftgate: Open and close the power liftgate with the OEM keyfob.

12

Module Programming Procedure completed.