

# FTI-HDP7: Vehicle Coverage and Preparation Notes

Make	Model	Year	Install	CAN	Lights	PCU	Clutch	I/O Changes
<b>DL-HA6</b> Acura	MDX PTS AT	2014-20	Type 1	PCU	Park / Auto Type B	AGB	N/A	Green White/Blue N/A

This installation requires **BLADE-AL(DL)-HA6** firmware, flash module and update the controller firmware before installing.

**PCU:**

Vehicle PCU locations differ by model, please note the specific locations according to the component locator, and also note that the 36-pin connector at the Smart PCU can be either *lt. brown* or *gray*.

**Lights:**

( - ) **Parking lights** connections are provided by the included headlight switch adapter, please ensure proper configuration to avoid damaging the vehicle's headlight switch. See detailed illustration on wiring page for specific configuration required.

The **FTI-HDP7** kit includes a headlight switch adapter equipped with pre-terminated wires that must be inserted into the gray I/O connector of a compatible Firstech control module. Replace the pk light and status wires from the I/O connector.

To avoid possible damage to the vehicle headlight switch, please confirm proper configuration of the included adapter.



## FTI-HDP7: Installation and Configuration Notes

- A** REQUIRED CONNECTIONS (COLORS VARY)
- B** REQUIRED CONNECTIONS - SEE NOTES
- C** REQUIRED CONFIGURATION

•FT-DAS Required for manual transmission.  
•BOTH Red & Red/White MUST be connected with high current application.

**Jumper Setting**

Parking Light	Accessory	Ignition (Default)	(+)Door Trigger In (Default)	(-)Door Trigger In (Default)
Trunk	Starter	Parking Light (Default)	Starter	Ignition
			Accessory (Default)	

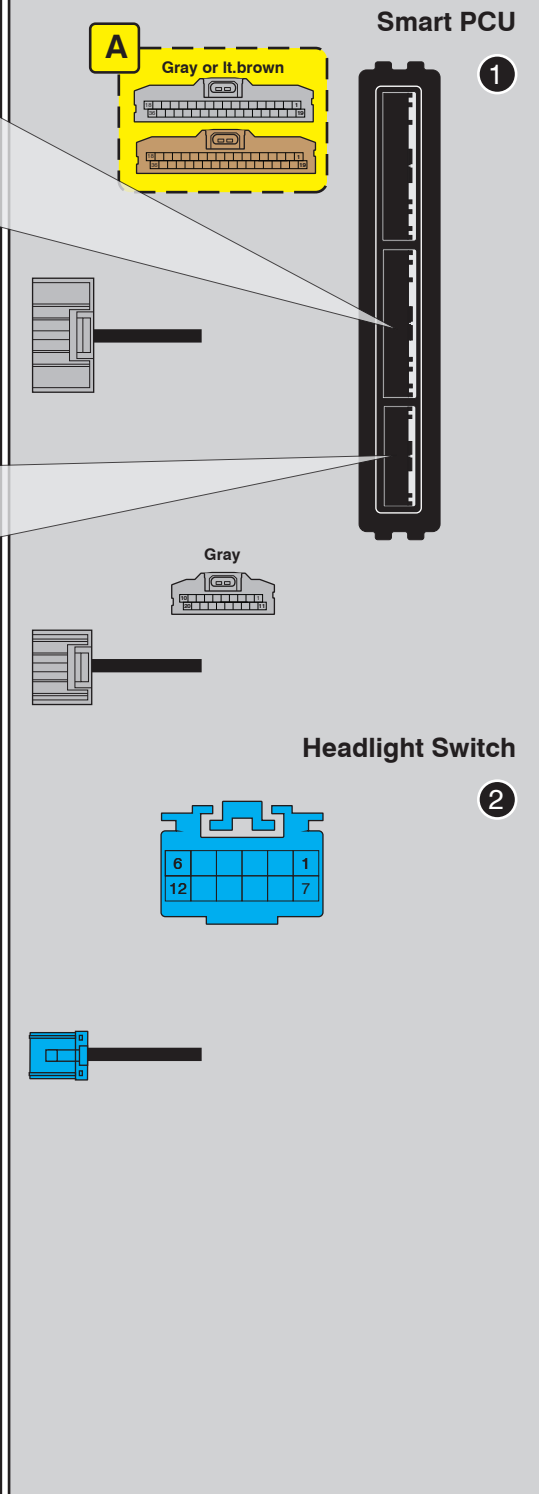
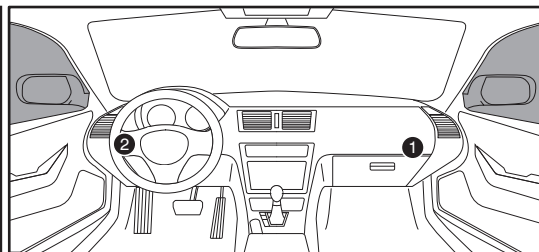
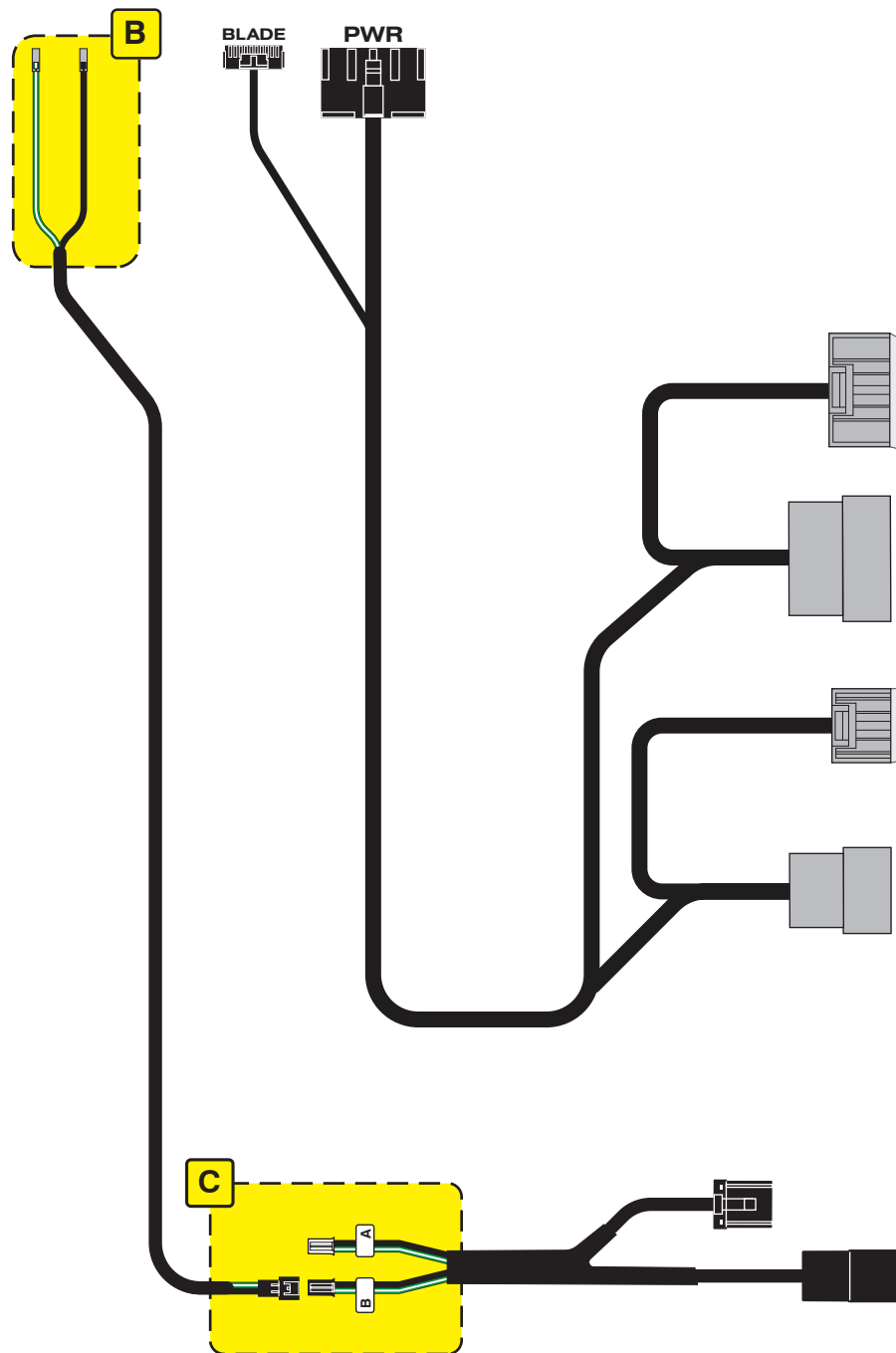
**CM7000/7200** Cut loop for A/T

**CM-900S/900AS**

**CM900AS/900S Jumper**



FEATURE COVERAGE																			
IMMOBILIZER DATA	AM RS CONTROL	DOOR LOCK	DOOR UNLOCK	ARM OEM ALARM	DISARM OEM ALARM	POWER LIFTGATE				DOOR STATUS	TRUNK STATUS	HOOD STATUS	BRAKE STATUS	E-BRAKE STATUS	TACH OUTPUT	AUTOLIGHT CTRL			PARKING LIGHTS



**Caution:** Using the wrong connector will damage the light switch. Please refer to the light configuration notes on the coverage page.

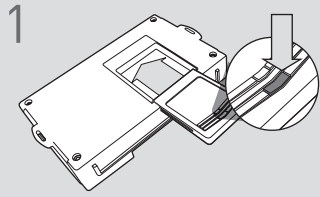
**Takeover not supported:** Vehicle engine will shut down when doors are opened.

**LED Programming Error Codes**

Module LED flashing RED during programming

- 1x - CAN error, check connectors
- 2x - Klon error, check connections, retry programming if error persists, perform a clearing flash then retry programming with all doors closed
- 3x - Immobilizer error, check connectors, confirm car starts
- 4x - VIN error, check connectors, re flash using vehicle entry

## CARTRIDGE INSTALLATION

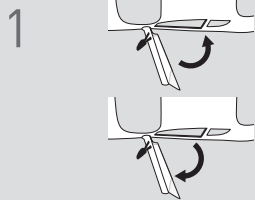


1 Slide cartridge into unit. Notice button under LED.

2

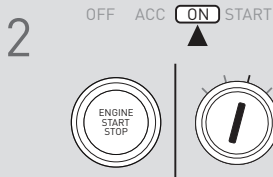
Ready for Module Programming Procedure.

## MODULE PROGRAMMING PROCEDURE

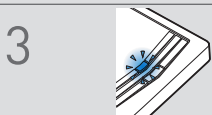


1 Close driver door.

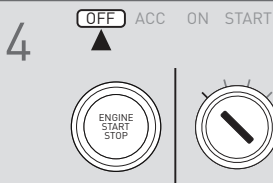
Re-open driver door to wake up data bus.



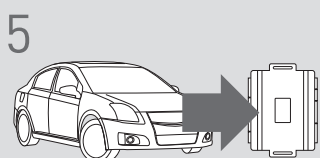
2 Turn ignition to ON position.



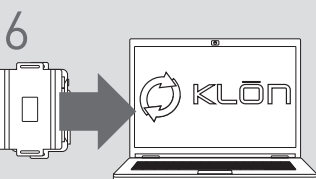
3 Wait, LED will flash BLUE rapidly.



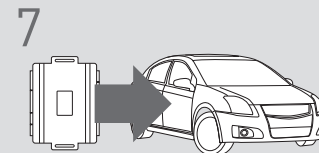
4 Turn ignition to OFF position.



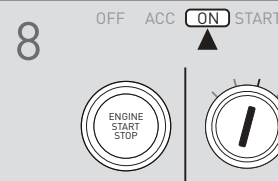
5 **WARNING:**  
Disconnect power last.  
Disconnect RS from vehicle.



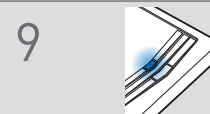
6 Connect RS to computer and proceed with extended programming.



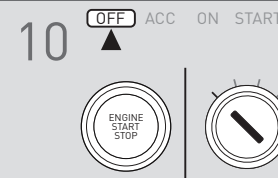
7 **WARNING:** Do not press RS programming button.  
Connect power first.  
Connect RS to vehicle.



8 Turn ignition to ON position.



9 Wait, LED will turn solid BLUE for 2 seconds.



10 Turn ignition to OFF position.



11 Press UNLOCK on the OEM remote.

**!** If the vehicle is equipped with a power liftgate: Open and close the power liftgate with the OEM keyfob.

12

Module Programming Procedure completed.