

FTI-HDK2: Vehicle Coverage and Preparation Notes

Make	Model	Year	Install	IMMO	Lights	BCM	POC	I/O Changes
DL-HA3 Honda	Civic STD Key AT	2012-15	Type 3	Gray	Park / Auto Type B	N/A	N/A	Green White/Blue N/A

Firmware:

This installation requires **BLADE-AL(DL)-HA3** firmware, flash module and update the controller firmware before the installation.

Install:

Type 3 vehicles use the **gray 7-pin** immobilizer adapter and the 8-pin CN1 adapter, green 7-pin immobilizer adapter is not required.

Lights:

The included lighting adapter is not compatible with this vehicle, analog parking light connections will need to be made.

Civic & Civic Hybrid:

Negative parking lights are available at the headlight switch (gray wire, pin #8, of the 12-pin connector).
Positive parking lights are available at the fuse-junction box (red wire, pin #29, of the green 44-pin connector).

CR-V:

Negative parking lights are available at the headlight switch (blue wire, pin #8, of the 12-pin connector).
Auto-light connection is available at the headlight switch (orange wire, pin #1, of the 12-pin connector).

This installation does not use the included adapter, so no configuration is necessary.

FTI-HDK2: Installation and Configuration Notes

- A** CONNECTION REQUIRED
- B** CONNECTION REQUIRED
- C** CONNECTION REQUIRED, SEE LIGHTS NOTE
- D** NOT REQUIRED
- E** NOT REQUIRED



FEATURE COVERAGE	
IMMOBILIZER DATA	○
A/M CONTROL	○
DOOR LOCK	○
DOOR UNLOCK	○
ARM OEM ALARM	○
DISARM OEM ALARM	○
TRUNK/HATCH RELEASE	○
DOOR STATUS	○
TRUNK STATUS	○
HOOD STATUS	○
BRAKE STATUS	○
E-BRAKE STATUS	○
TACH OUTPUT	○
AUTOLIGHT CTRL	○
PARKING LIGHTS	○

- FT-DAS Required for manual transmission.
- BOTH Red & Red/White MUST be connected with high current application.

Jumper Setting

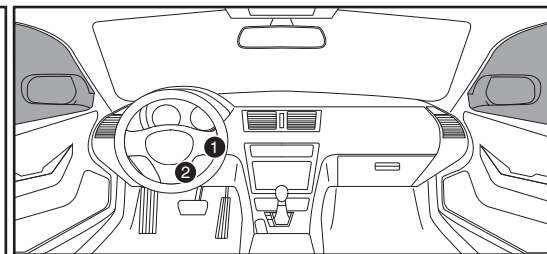
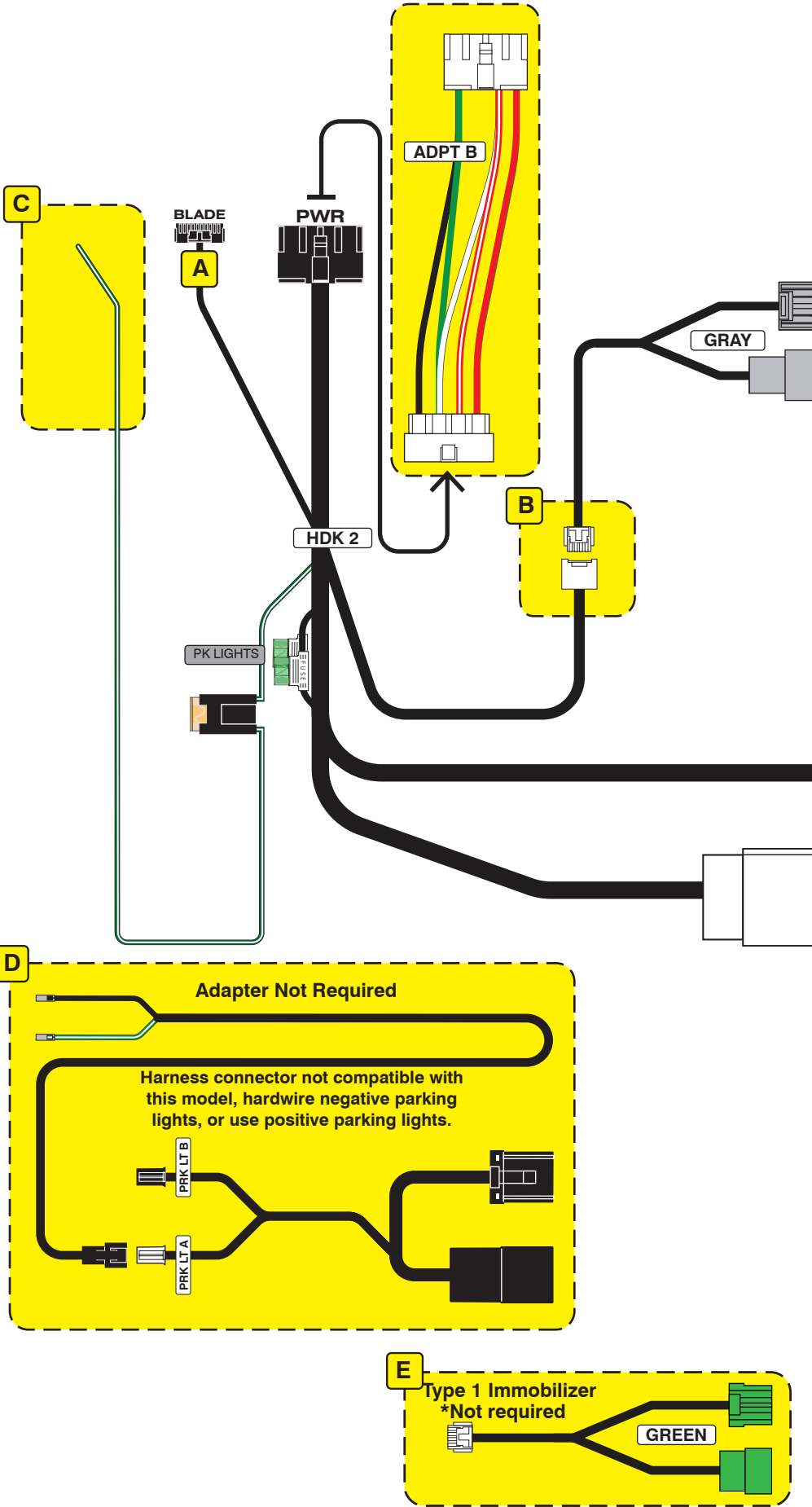
Parking Light Accessory (Default)				(+)Door Trigger In (Default)
Trunk Starter				(-)Door Trigger In (Default)
Parking Light (Default)				Starter Ignition Accessory (Default)

CM7000/7200 Cut loop for A/T

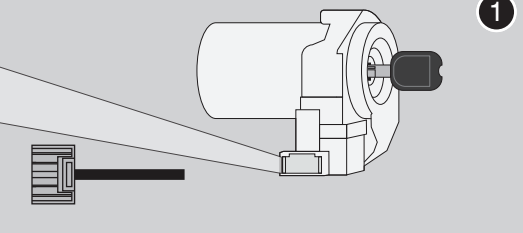
CM-900S/900AS

CM900AS/900S Jumper

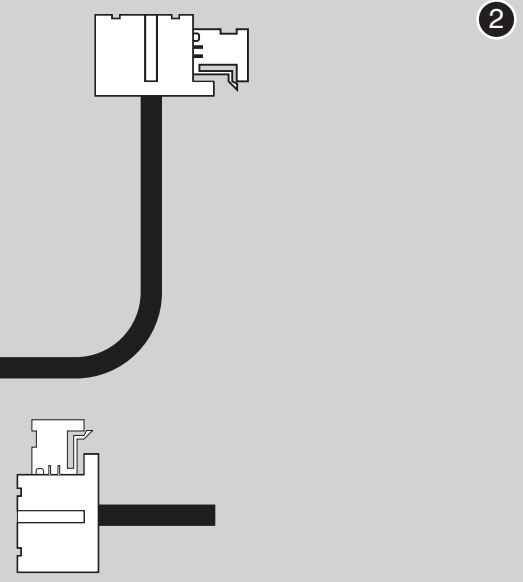
START ACC IGN1



Immobilizer Connector



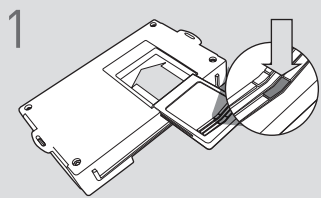
Ignition Switch



LED Programming Error Codes

Module LED flashing RED during programming
1x - CAN error, confirm connections to immobilizer adapter

CARTRIDGE INSTALLATION

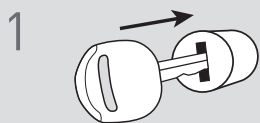


1 Slide cartridge into unit. Notice button under LED.

2

Ready for Module Programming Procedure.

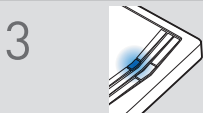
MODULE PROGRAMMING PROCEDURE



1 Insert key into ignition.



2 Turn key to ON position.



3 Wait, LED will turn solid BLUE for 2 seconds.



4 Turn key to OFF position.



5 Press UNLOCK on the OEM remote.



If the vehicle is equipped with a power liftgate: Open and close the power liftgate with the OEM keyfob.

6

Module Programming Procedure completed.