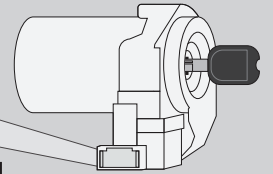


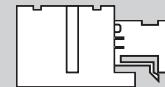
**Immobilizer Connector**

1



**Ignition Switch**

2



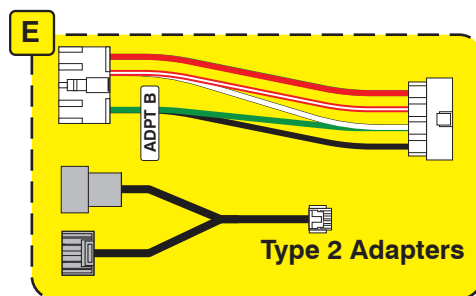
**Headlight Switch Connector**

3

1			6
7	9	11	12

**Códigos de error de programación de LED**

El LED del módulo parpadea en ROJO durante la programación  
1x - Error de CAN, confirme las conexiones al adaptador del inmovilizador



## CARTRIDGE INSTALLATION

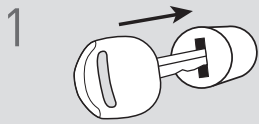


1 Slide cartridge into unit. Notice button under LED.

2

Ready for Module Programming Procedure.

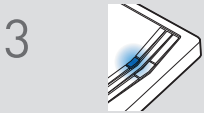
## MODULE PROGRAMMING PROCEDURE



1 Insert key into ignition.



2 Turn key to ON position.



3 Wait, LED will turn solid BLUE for 2 seconds.



4 Turn key to OFF position.



5 Press UNLOCK on the OEM remote.



If the vehicle is equipped with a power liftgate: Open and close the power liftgate with the OEM keyfob.

6

Module Programming Procedure completed.