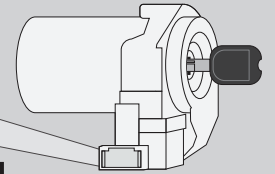
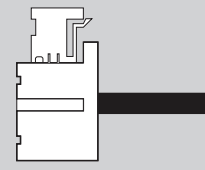
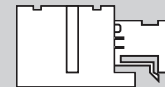


Immobilizer Connector ①

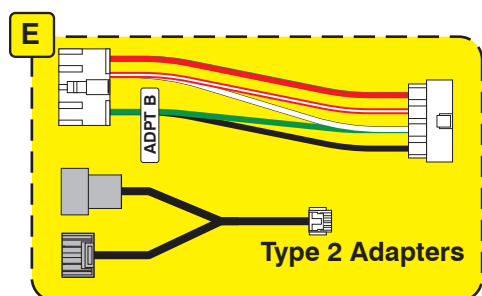


Ignition Switch ②



Headlight Switch Connector ③

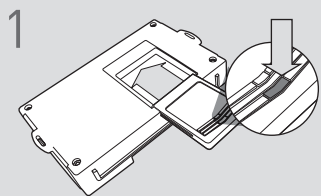
1			6
7	9	11	12



LED Programming Error Codes

Module LED flashing RED during programming
1x - CAN error, confirm connections to immobilizer adapter

CARTRIDGE INSTALLATION

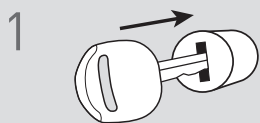


1 Slide cartridge into unit. Notice button under LED.

2

Ready for Module Programming Procedure.

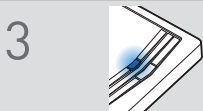
MODULE PROGRAMMING PROCEDURE



1 Insert key into ignition.



2 Turn key to ON position.



3 Wait, LED will turn solid BLUE for 2 seconds.



4 Turn key to OFF position.



5 Press UNLOCK on the OEM remote.



If the vehicle is equipped with a power liftgate: Open and close the power liftgate with the OEM keyfob.

6

Module Programming Procedure completed.