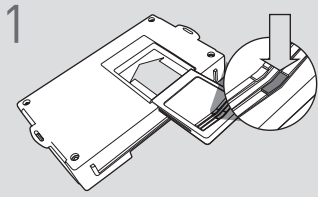


LED Programming Error Codes

Module LED flashing RED during programming

- 1x - No SWC data, check BLUE connector and CAN selection
- 2x - No immobilizer data, confirm GREEN and BLADE connectors
- 3x - No HS CAN
- 4x - No ignition, check BLUE connector and CAN selection
- 5x - VIN not matching Weblink data, contact engineering
- 6x - No immobilizer data, check GREEN connector or hold IGN
- 7x - Immobilizer data error, confirm only using one key
- 8x - No immobilizer data, check GREEN and BLADE connectors
- 9x - Immobilizer data error, see above
- 10x - Klon data error, reset module and repeat programming
- 11x - No ignition, check BLUE connector and CAN selection

CARTRIDGE INSTALLATION



1 Slide cartridge into unit. Notice button under LED.

2

Ready for Module Programming Procedure.

MODULE PROGRAMMING PROCEDURE

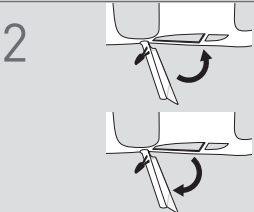
NOTE

- 1 When programming, only one key fob will be used. The other one must be located at least 10 feet away from the vehicle.



1 Remove battery from key fob.

Place key fob on key reader in armrest or center console.

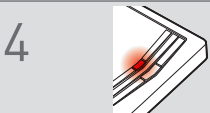


2 Close driver door.

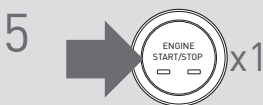
Re-open driver door to wake up data bus.



3 Push start button twice [2x] (or press start button 5 seconds) to ON position.



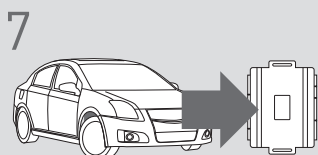
4 Wait, LED will turn solid RED.



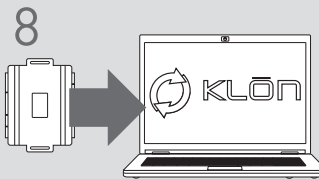
5 Push start button once [1x] to OFF position.



6 Wait, LED will flash BLUE rapidly.

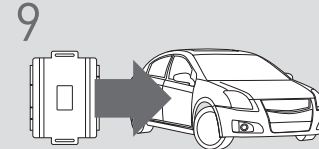


7 **WARNING:**
Disconnect power last.
Disconnect RS from vehicle.



8

Connect RS to computer and proceed with extended programming.



9

WARNING: Do not press RS programming button.
Connect power first.
Connect RS to vehicle.



10

Push start button twice [2x] (or press start button 5 seconds) to ON position.



11

Wait, LED will turn solid BLUE for 2 seconds.



12

Push start button once [1x] to OFF position.



13

Remove key fob from key reader.

Insert battery in key fob.



If the vehicle is equipped with a power liftgate:
Open and close the power liftgate with the OEM keyfob.

14

Module Programming Procedure completed.

WARNING: READ BEFORE REMOTE STARTING THE VEHICLE

IMPORTANT

- I All vehicle doors must be closed and locked prior to remote start sequence. Failure to comply will result in remote starter malfunction.

TAKE OVER PROCEDURE - TO THE VEHICLE OWNER

NOTE

- I All vehicle doors must be closed and locked prior to remote start sequence.



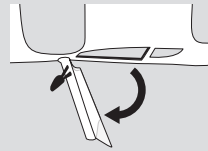
TIME RESTRICTION COMING UP !

1



Press unlock on OEM or aftermarket remote or request switch.

2



TIME RESTRICTION

Within 45 SECONDS from previous step:

Open vehicle door.
Enter vehicle.
Close vehicle door.

Press and release BRAKE pedal.

3

Take over procedure completed.



Failure to follow procedure within time restriction will result in vehicle engine shutdown.