

LED Programming Error Codes

- Module LED flashing RED during programming
- 1x - No ACC power, check GREEN connector
 - 2x - MUX status not detected, check GREEN connector
 - 3x - No IGN, check GREEN connector
 - 4x - No HSCAN activity, check BLUE connector
 - 5x - No SWC activity, check BLUE connector
 - 6x - Wrong SWC message, confirm key has been removed
 - 7x - No ACC power, check GREEN connector
 - 8x - No immobilizer data, check GREEN & BLADE connectors
 - 9x - IGN ON, confirm key has been removed
 - 10x - Keysense active, confirm key has been removed
 - 11x - No ACC, confirm key is on
 - 12x - No IGN, confirm key is on
 - 13x - VIN not matching Weblink data, contact engineering

CARTRIDGE INSTALLATION



1 Slide cartridge into unit. Notice button under LED.

2

Ready for Module Programming Procedure.

MODULE PROGRAMMING PROCEDURE



1 Insert key into ignition.



2 Turn key to ON position.



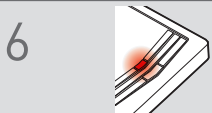
3 Wait, LED will flash BLUE rapidly.



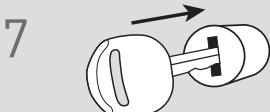
4 Turn key to OFF position.



5 Remove key.



6 LED will turn solid RED.



7 Insert key into ignition.



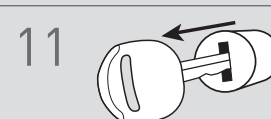
8 Turn key to ON position.



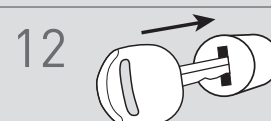
9 LED will turn OFF.



10 Turn key to OFF position.



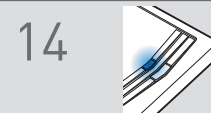
11 Remove key.



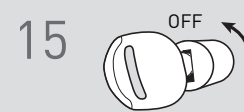
12 Insert key into ignition.



13 Turn key to ON position.



14 Wait, LED will turn solid BLUE for 2 seconds.



15 Turn key to OFF position.

16

Module Programming Procedure completed.