

Códigos de error de programación de LED

El LED del módulo parpadea en ROJO durante la programación

- 1x - Sin alimentación ACC, verifique el conector VERDE
- 2x - Estado MUX no detectado, verificar conector VERDE
- 3x - Sin IGN, verifique el conector VERDE
- 4x - Sin actividad HSCAN, verifique el conector AZUL
- 5x - Sin actividad SWC, verifique el conector AZUL
- 6x - mensaje SWC incorrecto, se ha eliminado la clave de confirmación
- 7x - Sin alimentación ACC, verifique el conector VERDE
- 8x - Sin datos del inmovilizador, verifique los conectores VERDE Y BLADE
- 9x - IGN ENCENDIDO, la clave de confirmación ha sido eliminada
- 10x - Keysense activo, confirmar clave ha sido eliminada
- 11x - Sin ACC, la tecla de confirmación está activada
- 12x - Sin IGN, la tecla de confirmación está activada
- 13x - VIN no coincide con los datos del enlace web, ingeniería de contacto

CARTRIDGE INSTALLATION



1 Slide cartridge into unit. Notice button under LED.

2

Ready for Module Programming Procedure.

MODULE PROGRAMMING PROCEDURE



1 Insert key into ignition.



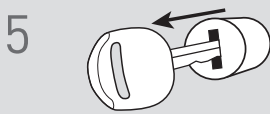
2 Turn key to ON position.



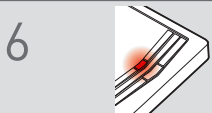
3 Wait, LED will flash BLUE rapidly.



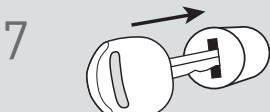
4 Turn key to OFF position.



5 Remove key.



6 LED will turn solid RED.



7 Insert key into ignition.



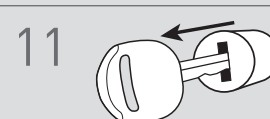
8 Turn key to ON position.



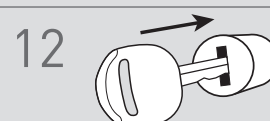
9 LED will turn OFF.



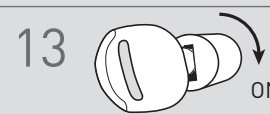
10 Turn key to OFF position.



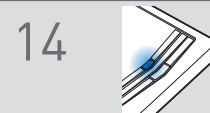
11 Remove key.



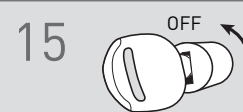
12 Insert key into ignition.



13 Turn key to ON position.



14 Wait, LED will turn solid BLUE for 2 seconds.



15 Turn key to OFF position.

16

Module Programming Procedure completed.