

FTI-GMT3: Vehicle Coverage and Preparation Notes

Make	Model	Year	Install	CAN	Lights	Type	BCM	Configuration
DL-GM7 Chevrolet	Cruze Limited Flip-Key AT	2016	Type 1	Type A	Park / Auto Type A	Key	CCPS	Feature Option None

Firmware: This installation uses **BLADE-AL(DL)-GM7**, flash module and update the controller firmware before installing.

Install: **Type 1** installation sources CAN data from the blue connector of the BCM, requiring the use of the **'A-connector'**, the connector marked 'B' is not used.

Lights: **Type A** lights (standard parking lights) are provided, as are **Type H** (hazard lights), both incorporated in the harness for visual display of runtime status/diagnostics. Re-pinning of the CM I/O (gray) harness is required, regardless of which type you choose to use, both options have been provided for your selection. If you choose hazards you will also need to configure the selected POC for one of the following hazard control options, **Hazard1** (POC option #30 (momentary) or **Hazard2** (POC option #23 (latching), depending on hazard switch operation.

Locks: The CM lock connector is not required for this installation type. Secure as needed.



FTI-GMT3 - Installation and Configuration Notes

- A** REQUIRED CONNECTION, SEE NOTE ABOVE
- B** NOT REQUIRED
- C** REQUIRED CONFIGURATION - TYPE A
- D** REQUIRED CONFIGURATION - KEY TYPE



FEATURE COVERAGE											
IMMOBILIZER DATA	PRIORITY UNLOCK	DOOR LOCK	DOOR UNLOCK	ARM OEM ALARM	DISARM OEM ALARM	TRUNK/HATCH RELEASE				DOOR STATUS	TRUNK STATUS
										RAP SHUTDOWN	BRAKE STATUS
										E-BRAKE STATUS	TACH OUTPUT
										DATA/MUX IGN/ST	HOOD STATUS
										SECURE TAKEOVER	PARKING LIGHTS
										HAZARD LIGHTS	

- FT-DAS Required for manual transmission.
- BOTH Red & Red/White MUST be connected with high current application.

Jumper Setting

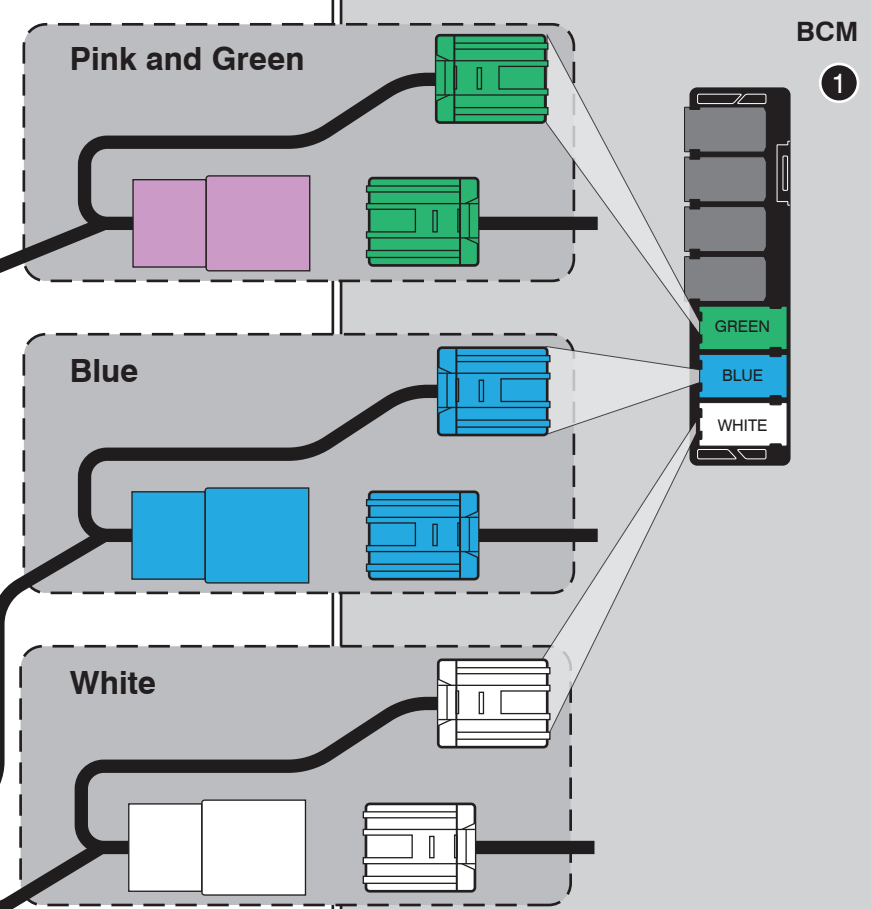
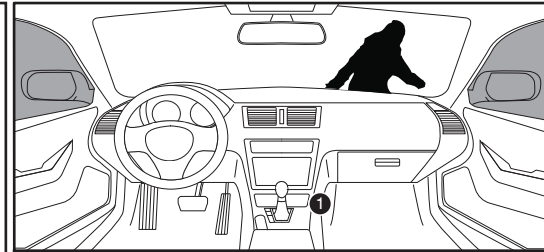
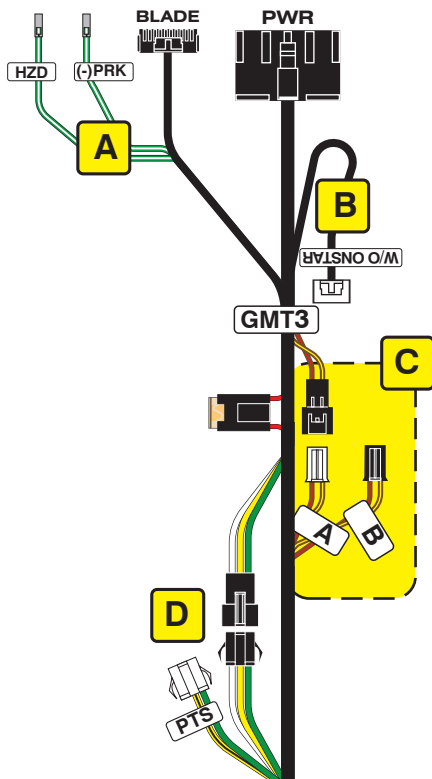
Parking Light	Accessory	Ignition (Default)	(+)Door Trigger In (Default)	(-)Door Trigger In (Default)
Trunk	Starter	Parking Light (Default)	Starter Ignition	Accessory (Default)

CM7000/7200 **Cut loop for A/T**

CM-900S/900AS

CM900AS/900S Jumper

START
ACC
IGN1



LED Programming Error Codes

- Module LED flashing RED during programming
- 1x - No ACC power, check GREEN connector
 - 2x - MUX status not detected, check GREEN connector
 - 3x - No IGN, check GREEN connector
 - 4x - No HSCAN activity, check BLUE connector
 - 5x - No SWC activity, check BLUE connector
 - 6x - Wrong SWC message, confirm key has been removed
 - 7x - No ACC power, check GREEN connector
 - 8x - No immobilizer data, check GREEN & BLADE connectors
 - 9x - IGN ON, confirm key has been removed
 - 10x - Keysense active, confirm key has been removed
 - 11x - No ACC, confirm key is on
 - 12x - No IGN, confirm key is on
 - 13x - VIN not matching Weblink data, contact engineering

CARTRIDGE INSTALLATION



1 Slide cartridge into unit. Notice button under LED.

2

Ready for Module Programming Procedure.

MODULE PROGRAMMING PROCEDURE



1 Insert key into ignition.



2 Turn key to ON position.



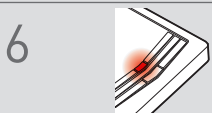
3 Wait, LED will flash BLUE rapidly.



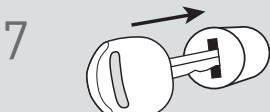
4 Turn key to OFF position.



5 Remove key.



6 LED will turn solid RED.



7 Insert key into ignition.



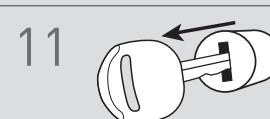
8 Turn key to ON position.



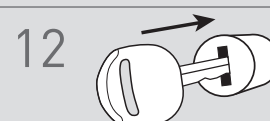
9 LED will turn OFF.



10 Turn key to OFF position.



11 Remove key.



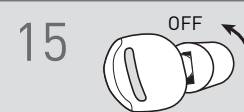
12 Insert key into ignition.



13 Turn key to ON position.



14 Wait, LED will turn solid BLUE for 2 seconds.



15 Turn key to OFF position.

16

Module Programming Procedure completed.