

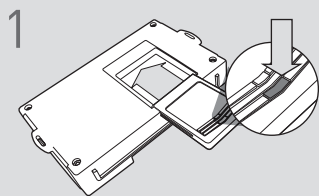
**E** **No Onstar/OEM Alarm** requiere un pulso ACC con desarmado para controlar adecuadamente el sistema de alarma OEM. Establezca la opción de función 1-11 en la opción 3 (Pulso ACC, mismo tiempo que pulso desarmado)

**Códigos de error de programación de LED**

El LED del módulo parpadea en ROJO durante la programación

- 1x - Sin alimentación ACC, verifique el conector VERDE
- 2x - Estado MUX no detectado, verificar conector VERDE
- 3x - Sin IGN, verifique el conector VERDE
- 4x - Sin actividad HSCAN, verifique el conector AZUL
- 5x - Sin actividad SWC, verifique el conector AZUL
- 6x: mensaje SWC incorrecto, se ha eliminado la clave de confirmación
- 7x - Sin alimentación ACC, verifique el conector VERDE
- 8x - Sin datos del inmovilizador, verifique los conectores VERDE Y BLADE
- 9x - IGN ENCENDIDO, la clave de confirmación ha sido eliminada
- 10x - Keysense activo, confirmar clave ha sido eliminada
- 11x - Sin ACC, la tecla de confirmación está activada
- 12x - Sin IGN, la tecla de confirmación está activada
- 13x - VIN no coincide con los datos del enlace web, póngase en contacto con el departamento de ingeniería

## CARTRIDGE INSTALLATION

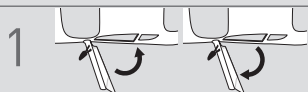


1 Slide cartridge into unit. Notice button under LED.

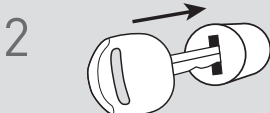
2

Ready for Module Programming Procedure.

## MODULE PROGRAMMING PROCEDURE - WITH KLON



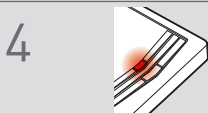
1 Close driver door. Re-open driver door to wake up data bus.



2 Insert key into ignition.



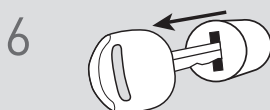
3 Turn key to ON position.



4 Wait, LED will turn solid RED.



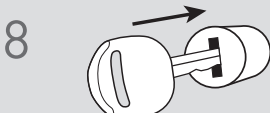
5 Turn key to OFF position.



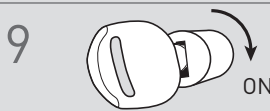
6 Remove key.



7 LED will turn OFF.



8 Insert key into ignition.



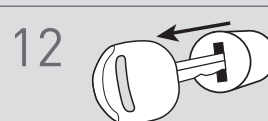
9 Turn key to ON position.



10 Wait, LED will flash BLUE rapidly.

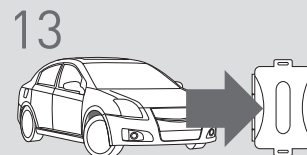


11 Turn key to OFF position.



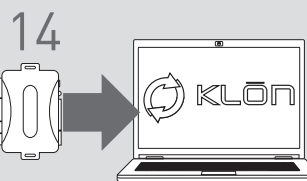
12

Remove key.



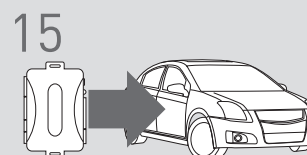
13

**WARNING:**  
Disconnect power last.  
Disconnect module from vehicle.



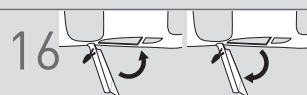
14

Connect module to computer and proceed with extended programming.



15

**WARNING:** Do not press module programming button.  
Connect power first.  
Connect module to vehicle.



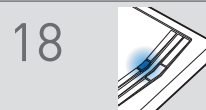
16

Close driver door. Re-open driver door to wake up data bus.



17

Turn key to ON position.



18

Wait, LED will turn solid BLUE for 2 seconds.



19

Turn key to OFF position.

20

Module Programming Procedure completed.