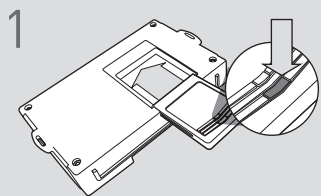


- LED Programming Error Codes**  
Module LED flashing RED during programming
- 1x - No ACC power, check GREEN connector
  - 2x - MUX status not detected, check GREEN connector
  - 3x - No IGN, check GREEN connector
  - 4x - No HSCAN activity, check BLUE connector
  - 5x - No SWC activity, check BLUE connector
  - 6x - Wrong SWC message, confirm key has been removed
  - 7x - No ACC power, check GREEN connector
  - 8x - No immobilizer data, check GREEN & BLADE connectors
  - 9x - IGN ON, confirm key has been removed
  - 10x - Keysense active, confirm key has been removed
  - 11x - No ACC, confirm key is on
  - 12x - No IGN, confirm key is on
  - 13x - VIN not matching Weblink data, contact engineering

## CARTRIDGE INSTALLATION

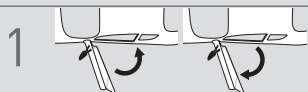


1 Slide cartridge into unit. Notice button under LED.

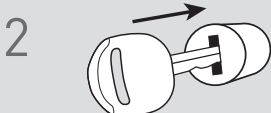
2

Ready for Module Programming Procedure.

## MODULE PROGRAMMING PROCEDURE - WITH KLON



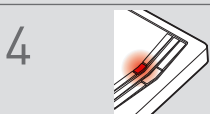
1 Close driver door. Re-open driver door to wake up data bus.



2 Insert key into ignition.



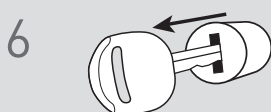
3 Turn key to ON position.



4 Wait, LED will turn solid RED.



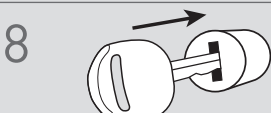
5 Turn key to OFF position.



6 Remove key.



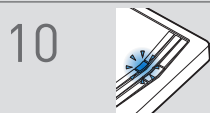
7 LED will turn OFF.



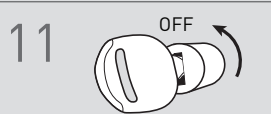
8 Insert key into ignition.



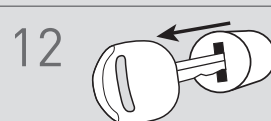
9 Turn key to ON position.



10 Wait, LED will flash BLUE rapidly.

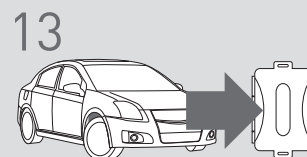


11 Turn key to OFF position.



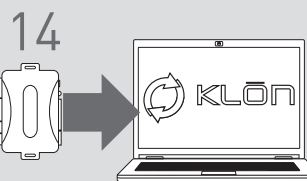
12

Remove key.



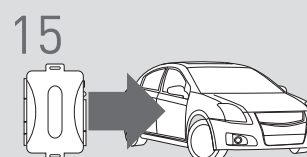
13

**WARNING:**  
Disconnect power last.  
Disconnect module from vehicle.



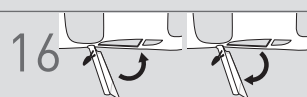
14

Connect module to computer and proceed with extended programming.



15

**WARNING:** Do not press module programming button.  
Connect power first.  
Connect module to vehicle.



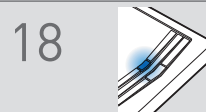
16

Close driver door. Re-open driver door to wake up data bus.



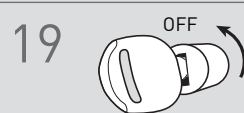
17

Turn key to ON position.



18

Wait, LED will turn solid BLUE for 2 seconds.



19

Turn key to OFF position.

20

Module Programming Procedure completed.