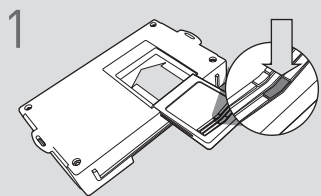


LED Programming Error Codes

Module LED flashing RED during programming

- 1x - No ACC power, check GREEN connector
- 2x - MUX status not detected, check GREEN connector
- 3x - No IGN, check GREEN connector
- 4x - No HSCAN activity, check BLUE connector
- 5x - No SWC activity, check BLUE connector
- 6x - Wrong SWC message, confirm key has been removed
- 7x - No ACC power, check GREEN connector
- 8x - No immobilizer data, check GREEN & BLADE connectors
- 9x - IGN ON, confirm key has been removed
- 10x - Keysense active, confirm key has been removed
- 11x - No ACC, confirm key is on
- 12x - No IGN, confirm key is on
- 13x - VIN not matching Weblink data, contact engineering

CARTRIDGE INSTALLATION

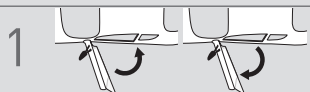


1 Slide cartridge into unit. Notice button under LED.

2

Ready for Module Programming Procedure.

MODULE PROGRAMMING PROCEDURE - WITH KLON



1 Close driver door. Re-open driver door to wake up data bus.



2 Insert key into ignition.



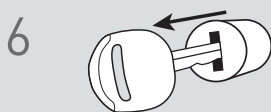
3 Turn key to ON position.



4 Wait, LED will turn solid RED.



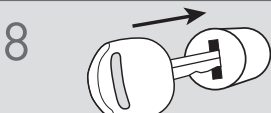
5 Turn key to OFF position.



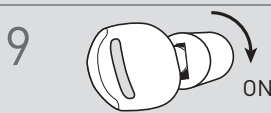
6 Remove key.



7 LED will turn OFF.



8 Insert key into ignition.



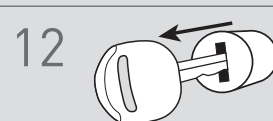
9 Turn key to ON position.



10 Wait, LED will flash BLUE rapidly.



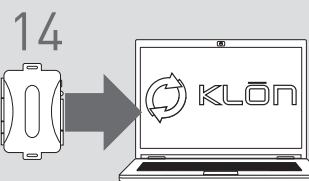
11 Turn key to OFF position.



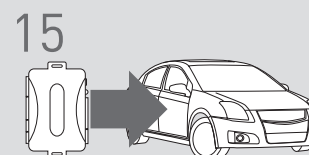
12 Remove key.



13 **WARNING:**
Disconnect power last.
Disconnect module from vehicle.



14 Connect module to computer and proceed with extended programming.



15 **WARNING:** Do not press module programming button.
Connect power first.
Connect module to vehicle.



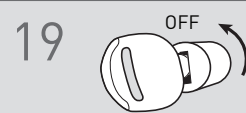
16 Close driver door. Re-open driver door to wake up data bus.



17 Turn key to ON position.



18 Wait, LED will turn solid BLUE for 2 seconds.



19 Turn key to OFF position.

20

Module Programming Procedure completed.