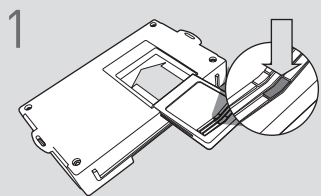


LED Programming Error Codes

- Module LED flashing RED during programming
- 1x - No ACC power, check GREEN connector
 - 2x - MUX status not detected, check GREEN connector
 - 3x - No IGN, check GREEN connector
 - 4x - No HSCAN activity, check BLUE connector
 - 5x - No SWC activity, check BLUE connector
 - 6x - Wrong SWC message, confirm key has been removed
 - 7x - No ACC power, check GREEN connector
 - 8x - No immobilizer data, check GREEN & BLADE connectors
 - 9x - IGN ON, confirm key has been removed
 - 10x - Keysense active, confirm key has been removed
 - 11x - No ACC, confirm key is on
 - 12x - No IGN, confirm key is on
 - 13x - VIN not matching Weblink data, contact engineering

CARTRIDGE INSTALLATION

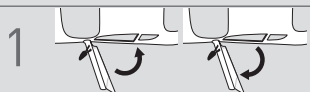


1 Slide cartridge into unit. Notice button under LED.

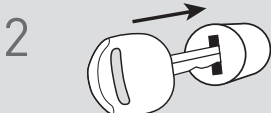
2

Ready for Module Programming Procedure.

MODULE PROGRAMMING PROCEDURE - WITH KLON



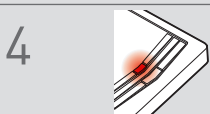
1 Close driver door. Re-open driver door to wake up data bus.



2 Insert key into ignition.



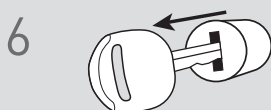
3 Turn key to ON position.



4 Wait, LED will turn solid RED.



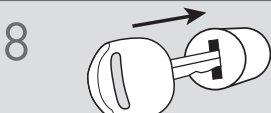
5 Turn key to OFF position.



6 Remove key.



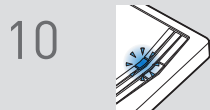
7 LED will turn OFF.



8 Insert key into ignition.



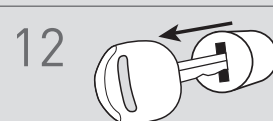
9 Turn key to ON position.



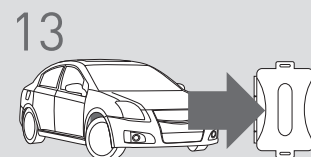
10 Wait, LED will flash BLUE rapidly.



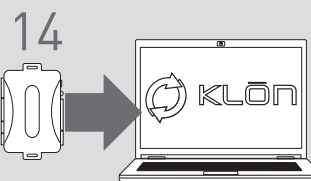
11 Turn key to OFF position.



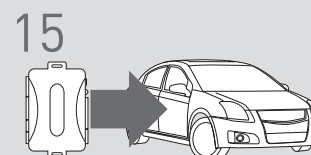
12 Remove key.



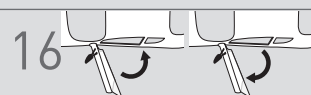
13 **WARNING:** Disconnect power last. Disconnect module from vehicle.



14 Connect module to computer and proceed with extended programming.



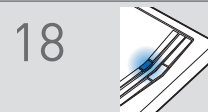
15 **WARNING:** Do not press module programming button. Connect power first. Connect module to vehicle.



16 Close driver door. Re-open driver door to wake up data bus.



17 Turn key to ON position.



18 Wait, LED will turn solid BLUE for 2 seconds.



19 Turn key to OFF position.

20

Module Programming Procedure completed.