

| Make | Model | Year | Install | CAN | Lights | OEM RS | POC | I/O Changes |
|---------------|--------------|---------|---------|------|--------------------|-----------------|-----|-------------------------|
| DL-FM8 | | | | | Park / Auto | | | Green White/Blue |
| Ford | F-450 PTS AT | 2020-21 | Type 2 | GTWY | A | Required | N/A | N/A |

Firmware: Esta instalación requiere firmware **BLADE-AL (DL) -FM8**, módulo flash y actualización del controlador firmware antes de comenzar la instalación. Este firmware requiere el uso de monitoreo de tacómetro, asegúrese de ese tacómetro está programado para evitar un mal funcionamiento.

Confirme la compatibilidad del vehículo en el sitio de flasheo del módulo antes de continuar con la instalación.

Consulte la nota de compatibilidad a continuación.

Requisitos de compatibilidad: Para confirmar la compatibilidad del firmware, confirme que el vehículo esté equipado con interruptor de pasador de capó activo. La advertencia de capó entreabierto debe mostrarse en el grupo de instrumentos cuando el capó está abierto y el encendido está encendido. Se requiere programación adicional del distribuidor e instalación de interruptores o manipulación del circuito de campana entreabierto * si la campana la advertencia entreabierto no se muestra al confirmar.

FTI-FDK2 - Notas de instalación y configuración

- A** CABLES AZULES MS CAN PARA LA PROGRAMACIÓN DE LA PARTE 1
- B** CABLES MARRONES HS CAN PARA LA PROGRAMACIÓN DE LA PARTE 2
- C** ASEGURE EL CONECTOR DE HOJA NO UTILIZADO AL MAZO DE CABLES PRINCIPAL
- D** MODIFICACIÓN DEL INTERRUPTOR DEL CAPÓ
(Requerido si el vehículo no está equipado con interruptor del capó)



| COBERTURA DE FUNCIONES | | | | | | | | | | | |
|------------------------|--|--|--|--|--|--|--|--|--|--|--|
| IMMOBILIZER DATA | | | | | | | | | | | |
| DOOR LOCK | | | | | | | | | | | |
| DOOR UNLOCK | | | | | | | | | | | |
| ARM OEM ALARM | | | | | | | | | | | |
| DISARM OEM ALARM | | | | | | | | | | | |
| | | | | | | | | | | | |
| DOOR STATUS | | | | | | | | | | | |
| RAP SHUTDOWN | | | | | | | | | | | |
| BRAKE STATUS | | | | | | | | | | | |
| HOOD STATUS | | | | | | | | | | | |
| TACH OUTPUT | | | | | | | | | | | |
| HEATED MIRRORS | | | | | | | | | | | |
| HEATED SEATS | | | | | | | | | | | |
| SECURE TAKEOVER | | | | | | | | | | | |
| PARKING LIGHTS | | | | | | | | | | | |
| REAR DEFROST | | | | | | | | | | | |
| AFTERMARKET CTRL | | | | | | | | | | | |

- FT-DAS Required for manual transmission.
- BOTH Red & Red/White MUST be connected with high current application.

Jumper Setting

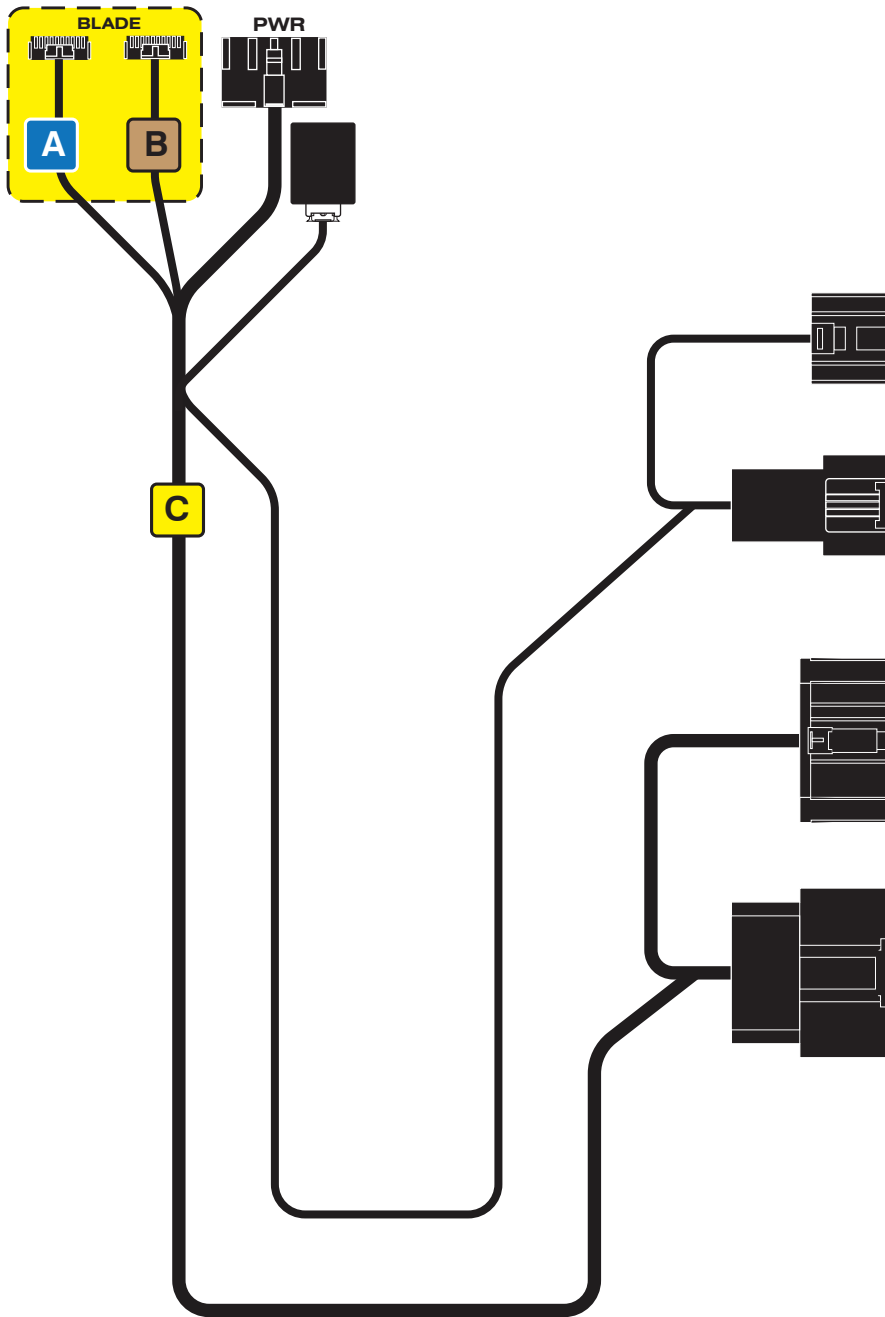
| | | | | |
|-------------------------|-----------|--------------------|-------------------------------|------------------------------|
| Parking Light | Accessory | Ignition (Default) | (+)-Door Trigger In (Default) | (-)Door Trigger In (Default) |
| Trunk | Starter | Starter | Ignition | Accessory (Default) |
| Parking Light (Default) | Starter | Ignition | Accessory (Default) | Accessory (Default) |

CM7000/7200

CM-900S/900AS

CM900AS/900S Jumper

START
ACC
IGN1



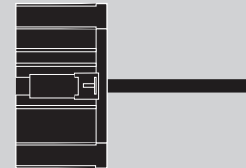
Headlight Switch

1



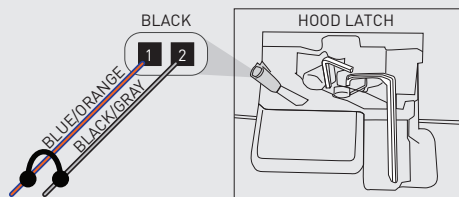
Gateway Module

2



D

IF THE VEHICLE IS NOT EQUIPPED WITH AN OEM HOOD SWITCH: CONNECT BLACK/GRAY WIRE TO BLUE/ORANGE WIRE IN LATCH CONNECTOR AND INSTALL AN AFTERMARKET HOOD SWITCH.



Códigos de error de programación de LED

El LED del módulo parpadea en ROJO durante la programación

- 1x - Sin actividad CAN, confirme el conector BLADE 1 o BLADE 2
- 2x - Sin encendido, confirme el conector BLADE 1 o BLADE 2
- 3x - Sin comunicación con BCM, confirmar compatibilidad
- 4x - No se puede activar OEM RS, confirme la compatibilidad
- 5x - No se puede activar OEM RS, el firmware no funcionará

Parpadeo rápido: conexión CAN, conector BLADE 1/2 inverso

CARTRIDGE INSTALLATION



1 Slide cartridge into unit. Notice button under LED.

2

Ready for Module Programming Procedure.

MODULE PROGRAMMING PROCEDURE

1



CONNECT BLADE connector 'A', proceed with Step 1 programming

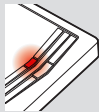
2

OFF ACC ON START



Set ignition to ON position.

3



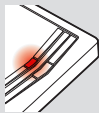
Wait, LED 1 will turn solid RED.

4



Wait, LED 1 will flash BLUE once [1x].

5



Wait, LED 1 will turn solid RED.

6

OFF ACC ON START



Set ignition to OFF position.

7



DISCONNECT BLADE connector 'A',
CONNECT BLADE connector 'B',
proceed with Step 2 programming

8

OFF ACC ON START



Set ignition to ON position.

9



Wait, LED 1 will turn solid RED.

10



Wait, LED 1 will flash BLUE rapidly.

11



Wait, LED 1 will turn solid BLUE for 2 seconds.

12

OFF ACC ON START



Set ignition to OFF position.

13

Module Programming Procedure completed.

TAKE OVER PROCEDURE - TO THE VEHICLE OWNER

NOTE

- I All vehicle doors must be closed and locked prior to remote start sequence.

1



Press unlock on OEM or aftermarket remote or request switch.

2



DO NOT PRESS BRAKE PEDAL. Set ignition to ON position. Wait 2 seconds for key validation.

3



Press and release BRAKE pedal.

4

Take over procedure completed.



Failure to follow procedure will result in vehicle engine shutdown.