

| Make | Model | Year | Install | CAN | Lights | OEM RS | POC | I/O Changes |
|---------------|---|---------|---------|------|--------------------|--------|-----|-------------------------|
| DL-FM8 | | | | | Park / Auto | | | Green White/Blue |
| Ford | F-350 STD Key AT w/OEM Keyless Entry | 2017-19 | Type 2 | GTWY | A | N/A | N/A | N/A |

Firmware: This installation requires **BLADE-AL(DL)-FM8** firmware, flash module and update the controller firmware before beginning the installation. This firmware requires the use of tach monitoring, please ensure that tach is programmed to avoid malfunction.

Confirm vehicle compatibility on the module flashing site before proceeding with installation.

See compatibility note below.

Compatibility requirements: In order to confirm firmware compatibility, please confirm vehicle is equipped with active hood pin switch. Hood ajar warning must be displayed in instrument cluster when hood is open and ignition is on. Additional dealer programming and switch installation or hood ajar circuit manipulation* is required if hood ajar warning is not displayed when confirming.

FTI-FDK2: Installation and Configuration Notes

- A** BLUE MS CAN WIRES FOR PART 1 PROGRAMMING
- B** BROWN HS CAN WIRES FOR PART 2 PROGRAMMING
- C** SECURE UNUSED BLADE CONNECTOR TO MAIN HARNESS
- D** HOOD SWITCH MODIFICATION (Required if vehicle is not equipped with hood switch)



| FEATURE COVERAGE | | | | | | | | | | | | |
|------------------|--|--|--|--|--|--|--|--|--|--|--|--|
| IMMOBILIZER DATA | | | | | | | | | | | | |
| DOOR LOCK | | | | | | | | | | | | |
| DOOR UNLOCK | | | | | | | | | | | | |
| ARM OEM ALARM | | | | | | | | | | | | |
| DISARM OEM ALARM | | | | | | | | | | | | |
| DOOR STATUS | | | | | | | | | | | | |
| RAP SHUTDOWN | | | | | | | | | | | | |
| BRAKE STATUS | | | | | | | | | | | | |
| HOOD STATUS | | | | | | | | | | | | |
| TACH OUTPUT | | | | | | | | | | | | |
| HEATED MIRRORS | | | | | | | | | | | | |
| HEATED SEATS | | | | | | | | | | | | |
| SECURE TAKEOVER | | | | | | | | | | | | |
| PARKING LIGHTS | | | | | | | | | | | | |
| REAR DEFROST | | | | | | | | | | | | |
| AFTERMARKET CTRL | | | | | | | | | | | | |

•FT-DAS Required for manual transmission.
•BOTH Red & Red/White MUST be connected with high current application.

Jumper Setting

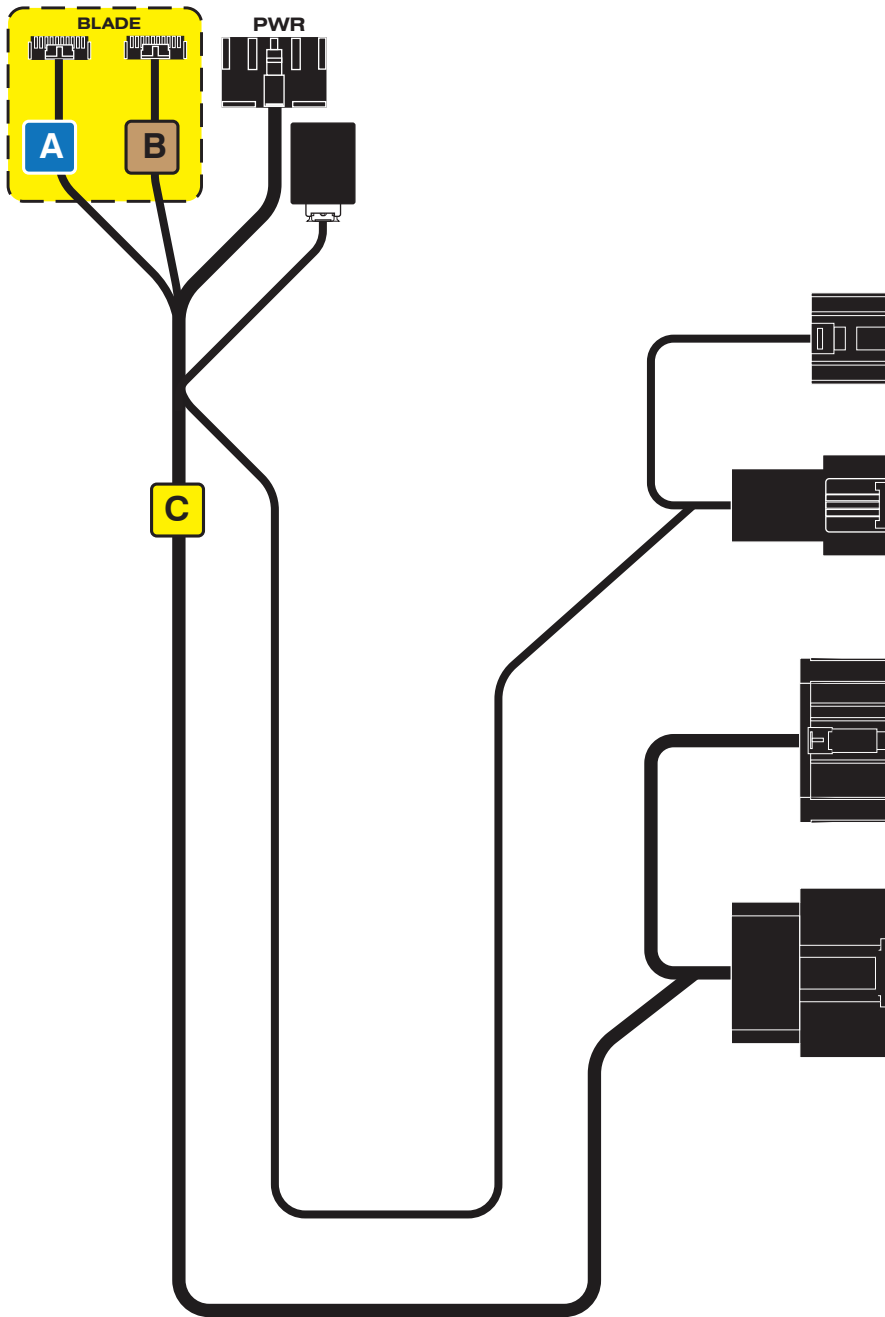
| | | | | | | | | |
|--|--|--|--|--------------------------------------|--|--|--|------------------------------|
| Parking Light Accessory Ignition (Default) | | | | (+)Door Trigger In (Default) | | | | (-)Door Trigger In (Default) |
| Trunk Starter Parking Light (Default) | | | | Starter Ignition Accessory (Default) | | | | |

CM7000/7200 Cut loop for A/T

CM-900S/900AS

CM900AS/900S Jumper

START
ACC
IGN1



Headlight Switch

1



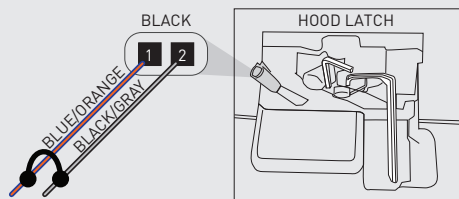
Gateway Module

2



D

IF THE VEHICLE IS NOT EQUIPPED WITH AN OEM HOOD SWITCH: CONNECT BLACK/GRAY WIRE TO BLUE/ORANGE WIRE IN LATCH CONNECTOR AND INSTALL AN AFTERMARKET HOOD SWITCH.



LED Programming Error Codes

Module LED flashing RED during programming

- 1x - No CAN activity, confirm BLADE 1 or BLADE 2 connector
- 2x - No ignition, confirm BLADE 1 or BLADE 2 connector
- 3x - No communication with BCM, confirm compatibility
- 4x - Unable to activate OEM RS, confirm compatibility
- 5x - Unable to activate OEM RS, firmware will not work
- Fast Blink - CAN connection, reverse BLADE 1/2 connector

CARTRIDGE INSTALLATION



1 Slide cartridge into unit. Notice button under LED.

2

Ready for Module Programming Procedure.

MODULE PROGRAMMING PROCEDURE



1 CONNECT BLADE connector 'A', proceed with Step 1 programming



2 Set ignition to ON position.



3 Wait, LED 1 will turn solid RED.



4 Wait, LED 1 will flash BLUE once [1x].



5 Wait, LED 1 will turn solid RED.



6 Set ignition to OFF position.



7 DISCONNECT BLADE connector 'A', CONNECT BLADE connector 'B', proceed with Step 2 programming



8 Set ignition to ON position.



9 Wait, LED 1 will turn solid RED.



10 Wait, LED 1 will flash BLUE rapidly.



11 Wait, LED 1 will turn solid BLUE for 2 seconds.



12 Set ignition to OFF position.

13

Module Programming Procedure completed.

TAKE OVER PROCEDURE - TO THE VEHICLE OWNER

NOTE

- I All vehicle doors must be closed and locked prior to remote start sequence.

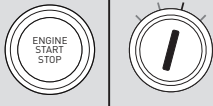
1



Press unlock on OEM or aftermarket remote or request switch.

2

OFF ACC ON START



DO NOT PRESS BRAKE PEDAL. Set ignition to ON position. Wait 2 seconds for key validation.

3



Press and release BRAKE pedal.

4

Take over procedure completed.



Failure to follow procedure will result in vehicle engine shutdown.