

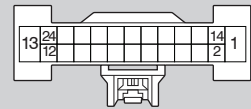
Headlight Switch

1



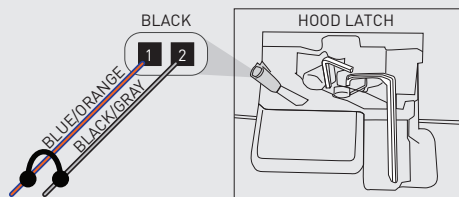
Gateway Module

2



D

IF THE VEHICLE IS NOT EQUIPPED WITH AN OEM HOOD SWITCH: CONNECT BLACK/GRAY WIRE TO BLUE/ORANGE WIRE IN LATCH CONNECTOR AND INSTALL AN AFTERMARKET HOOD SWITCH.



Códigos de error de programación de LED

El LED del módulo parpadea en ROJO durante la programación

- 1x - Sin actividad CAN, confirme el conector BLADE 1 o BLADE 2
- 2x - Sin encendido, confirme el conector BLADE 1 o BLADE 2
- 3x - Sin comunicación con BCM, confirmar compatibilidad
- 4x - No se puede activar OEM RS, confirme la compatibilidad
- 5x - No se puede activar OEM RS, el firmware no funcionará

Parpadeo rápido: conexión CAN, conector BLADE 1/2 inverso

CARTRIDGE INSTALLATION



1 Slide cartridge into unit. Notice button under LED.

2

Ready for Module Programming Procedure.

MODULE PROGRAMMING PROCEDURE

1



CONNECT BLADE connector 'A', proceed with Step 1 programming

2

OFF ACC ON START



Set ignition to ON position.

3



Wait, LED 1 will turn solid RED.

4



Wait, LED 1 will flash BLUE once [1x].

5



Wait, LED 1 will turn solid RED.

6

OFF ACC ON START



Set ignition to OFF position.

7



DISCONNECT BLADE connector 'A',
CONNECT BLADE connector 'B'.
proceed with Step 2 programming

8

OFF ACC ON START



Set ignition to ON position.

9



Wait, LED 1 will turn solid RED.

10



Wait, LED 1 will flash BLUE rapidly.

11



Wait, LED 1 will turn solid BLUE for 2 seconds.

12

OFF ACC ON START



Set ignition to OFF position.

13

Module Programming Procedure completed.

TAKE OVER PROCEDURE - TO THE VEHICLE OWNER

NOTE

- I All vehicle doors must be closed and locked prior to remote start sequence.

1



Press unlock on OEM or aftermarket remote or request switch.

2



DO NOT PRESS BRAKE PEDAL. Set ignition to ON position. Wait 2 seconds for key validation.

3



Press and release BRAKE pedal.

4

Take over procedure completed.



Failure to follow procedure will result in vehicle engine shutdown.