

Make	Model	Year	Install	CAN	Lights	OEM RS	POC	I/O Changes
<b>DL-FM8</b> Ford	F-250 PTS AT	2020-21	Type 2	GTWY	Park / Auto A	<b>Required</b>	N/A	Green White/Blue N/A

**Firmware:** This installation requires **BLADE-AL(DL)-FM8** firmware, flash module and update the controller firmware before beginning the installation. This firmware requires the use of tach monitoring, please ensure that tach is programmed to avoid malfunction.

Confirm vehicle compatibility on the module flashing site before proceeding with installation.

See compatibility note below.

**2020-21 model year compatibility requirements:** This installation requires that the vehicle be equipped with an active and functioning OEM remote starter, in order for the firmware to function properly. Without an OEM remote starter to control, this firmware is incapable of controlling the vehicle and the installation will require a fully hardwired key surrender solution.

**Compatibility requirements:** In order to confirm firmware compatibility, please confirm vehicle is equipped with active hood pin switch. Hood ajar warning must be displayed in instrument cluster when hood is open and ignition is on. Additional dealer programming and switch installation or hood ajar circuit manipulation\* is required if hood ajar warning is not displayed when confirming.

## FTI-FDK2: Installation and Configuration Notes

- A** REQUIRED FOR PART 1 PROGRAMMING
- B** REQUIRED FOR PART 2 PROGRAMMING
- C** SECURE BLADE CONNECTOR 'A' TO MAIN HARNESS
- D** HOOD SWITCH MODIFICATION (Required if vehicle is not equipped with hood switch)



FEATURE COVERAGE											
IMMOBILIZER DATA											
DOOR LOCK											
DOOR UNLOCK											
ARM OEM ALARM											
DISARM OEM ALARM											
DOOR STATUS											
RAP SHUTDOWN											
BRAKE STATUS											
HOOD STATUS											
TACH OUTPUT											
HEATED MIRRORS											
HEATED SEATS											
SECURE TAKEOVER											
PARKING LIGHTS											
REAR DEFROST											
AFTERMARKET CTRL											

•FT-DAS Required for manual transmission.  
•BOTH Red & Red/White MUST be connected with high current application.

**Jumper Setting**

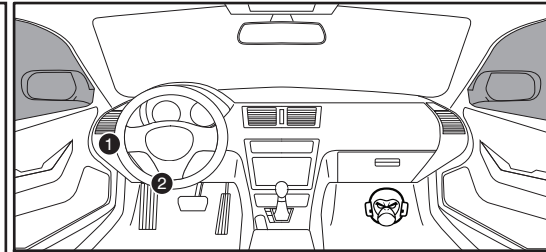
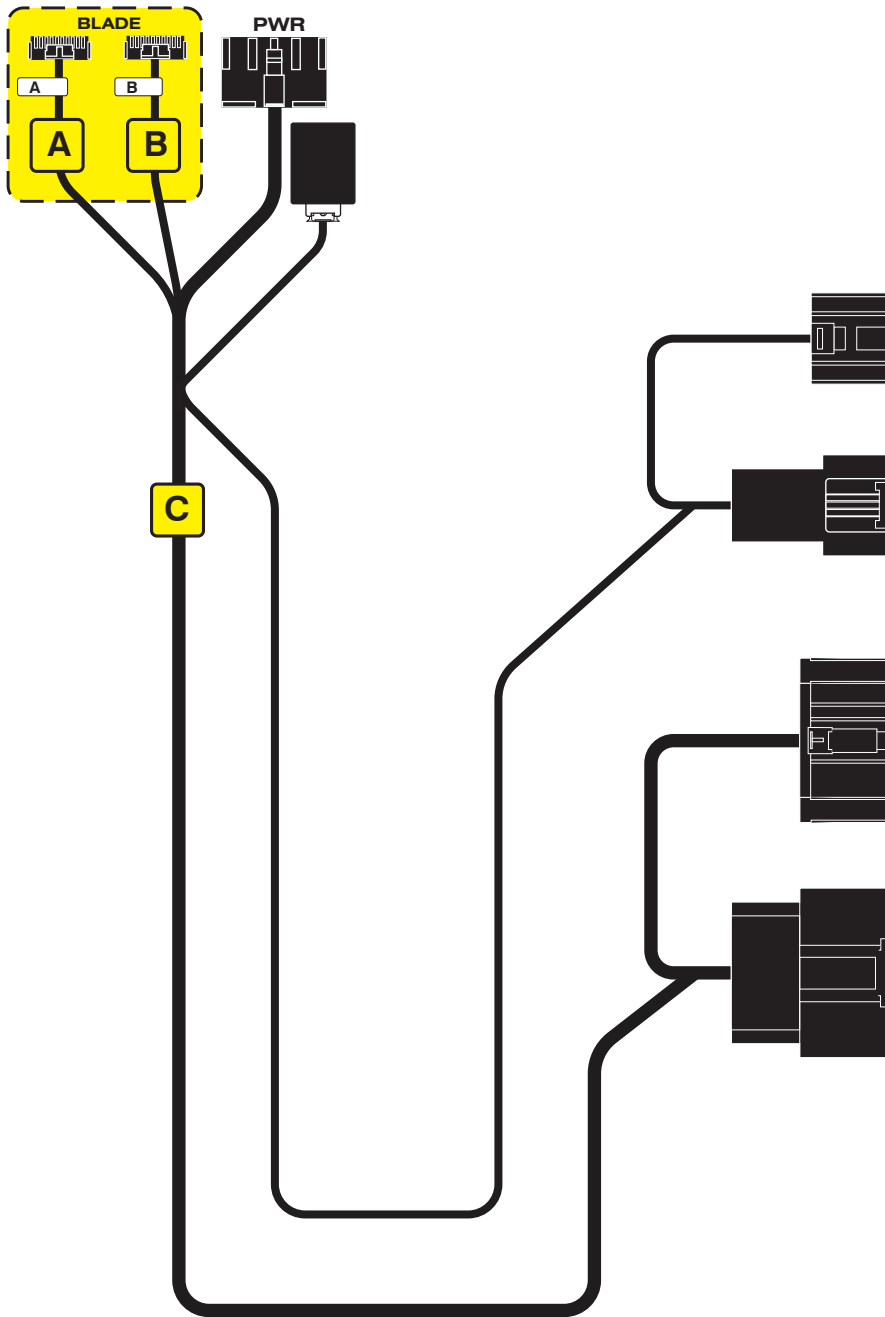
Parking Light	Accessory	Ignition (Default)	(+)Door Trigger In (Default)	(-)Door Trigger In (Default)
Trunk	Starter	Parking Light (Default)	Starter	Ignition
Accessory (Default)				

**CM7000/7200** Cut loop for A/T

**CM-900S/900AS**

**CM900AS/900S Jumper**

START  
ACC  
IGN1



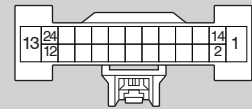
**Headlight Switch**

1



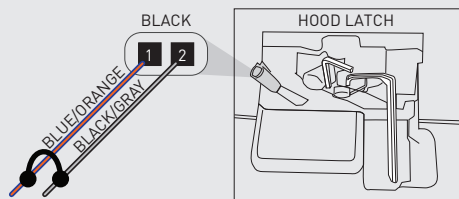
**Gateway Module**

2



**D**

IF THE VEHICLE IS NOT EQUIPPED WITH AN OEM HOOD SWITCH: CONNECT BLACK/GRAY WIRE TO BLUE/ORANGE WIRE IN LATCH CONNECTOR AND INSTALL AN AFTERMARKET HOOD SWITCH.



**LED Programming Error Codes**

Module LED flashing RED during programming

- 1x - No CAN activity, confirm BLADE 1 or BLADE 2 connector
- 2x - No ignition, confirm BLADE 1 or BLADE 2 connector
- 3x - No communication with BCM, confirm compatibility
- 4x - Unable to activate OEM RS, confirm compatibility
- 5x - Unable to activate OEM RS, firmware will not work
- Fast Blink - CAN connection, reverse BLADE 1/2 connector

## CARTRIDGE INSTALLATION



1 Slide cartridge into unit. Notice button under LED.

2

Ready for Module Programming Procedure.

## MODULE PROGRAMMING PROCEDURE

1



CONNECT BLADE connector 'A', proceed with Step 1 programming

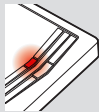
2

OFF ACC ON START



Set ignition to ON position.

3



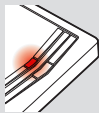
Wait, LED 1 will turn solid RED.

4



Wait, LED 1 will flash BLUE once [1x].

5



Wait, LED 1 will turn solid RED.

6

OFF ACC ON START



Set ignition to OFF position.

7



DISCONNECT BLADE connector 'A',  
CONNECT BLADE connector 'B'.  
proceed with Step 2 programming

8

OFF ACC ON START



Set ignition to ON position.

9



Wait, LED 1 will turn solid RED.

10



Wait, LED 1 will flash BLUE rapidly.

11



Wait, LED 1 will turn solid BLUE for 2 seconds.

12

OFF ACC ON START



Set ignition to OFF position.

13

Module Programming Procedure completed.

## TAKE OVER PROCEDURE - TO THE VEHICLE OWNER

### NOTE

- I All vehicle doors must be closed and locked prior to remote start sequence.

1



Press unlock on OEM or aftermarket remote or request switch.

2



DO NOT PRESS BRAKE PEDAL. Set ignition to ON position. Wait 2 seconds for key validation.

3



Press and release BRAKE pedal.

4

Take over procedure completed.



Failure to follow procedure will result in vehicle engine shutdown.