

| Make          | Model    | Year | Install | CAN | Lights                | IGN | Hood | I/O Changes      |
|---------------|----------|------|---------|-----|-----------------------|-----|------|------------------|
| DL-CH7<br>RAM | 3500 PTS | 2018 | Type 2  | CJB | Park / Auto<br>Type B | BCM | BCM  | Green White/Blue |

### Firmware:

Los vehículos cubiertos usan **BLADE-AL (DL) -CH7**, confirman la aplicación, modulan el flash y actualizan el controlador firmware antes de instalar.

### CAN:

Los vehículos **tipo 1** usan conexiones CAN en el arnés en OBD-II, la extensión CAN incluida no es necesaria para este tipo de instalación.

### Luces:

Las luces de estacionamiento **tipo A** usan el conector de 6 pines, asegúrese de que el conector de 10 pines no utilizado esté debidamente asegurado por seguridad.

### Ignición:

Las disposiciones comunes de encendido se enumeran en el diagrama de la BLADE, el encendido también está disponible en el vehículo BCM (conector C5 / E, rosa / blanco, pin # 27). El cable de estado del capó está disponible en el BCM del vehículo, conector C1, pin # 11 (violeta / azul).

## FTI-CDP1 - Notas de instalación y configuración

- A** La conexión CAN tipo 1 utiliza la provisión de arnés para obtener datos CAN del conector OBD-II
- B** El cable de extensión CAN tipo 2 no se utiliza en los vehículos cubiertos, asegúrese de que todos los no utilizados las conexiones están debidamente aisladas y aseguradas por seguridad.
- C** Estado del pin del capó del vehículo (-), conexión ubicada en el conector C1 del BCM (pin # 13, violeta / azul)
- D** Puente de fuente de ignición, NO se requiere CONEXIÓN para este tipo de instalación. Asegure el encendido sin usar puentes para garantizar la seguridad
- E** La conexión de encendido varía según el vehículo, el localizador de componentes ilustra la conexión común a BCM conector C5 (pin # 27, rosa / blanco), vea las notas en la página de cobertura para conocer los detalles de ubicación y excepciones

•FT-DAS Required for manual transmission.  
•BOTH Red & Red/White MUST be connected with high current application.

**Jumper Setting**

|               |           |                         |                    |                              |
|---------------|-----------|-------------------------|--------------------|------------------------------|
| Parking Light | Accessory | Ignition (Default)      | (+)Door Trigger In | (-)Door Trigger In (Default) |
| Trunk         | Starter   | Parking Light (Default) | Starter            | Ignition                     |
|               |           |                         |                    | Accessory (Default)          |

**CM7000/7200** Cut loop for A/T

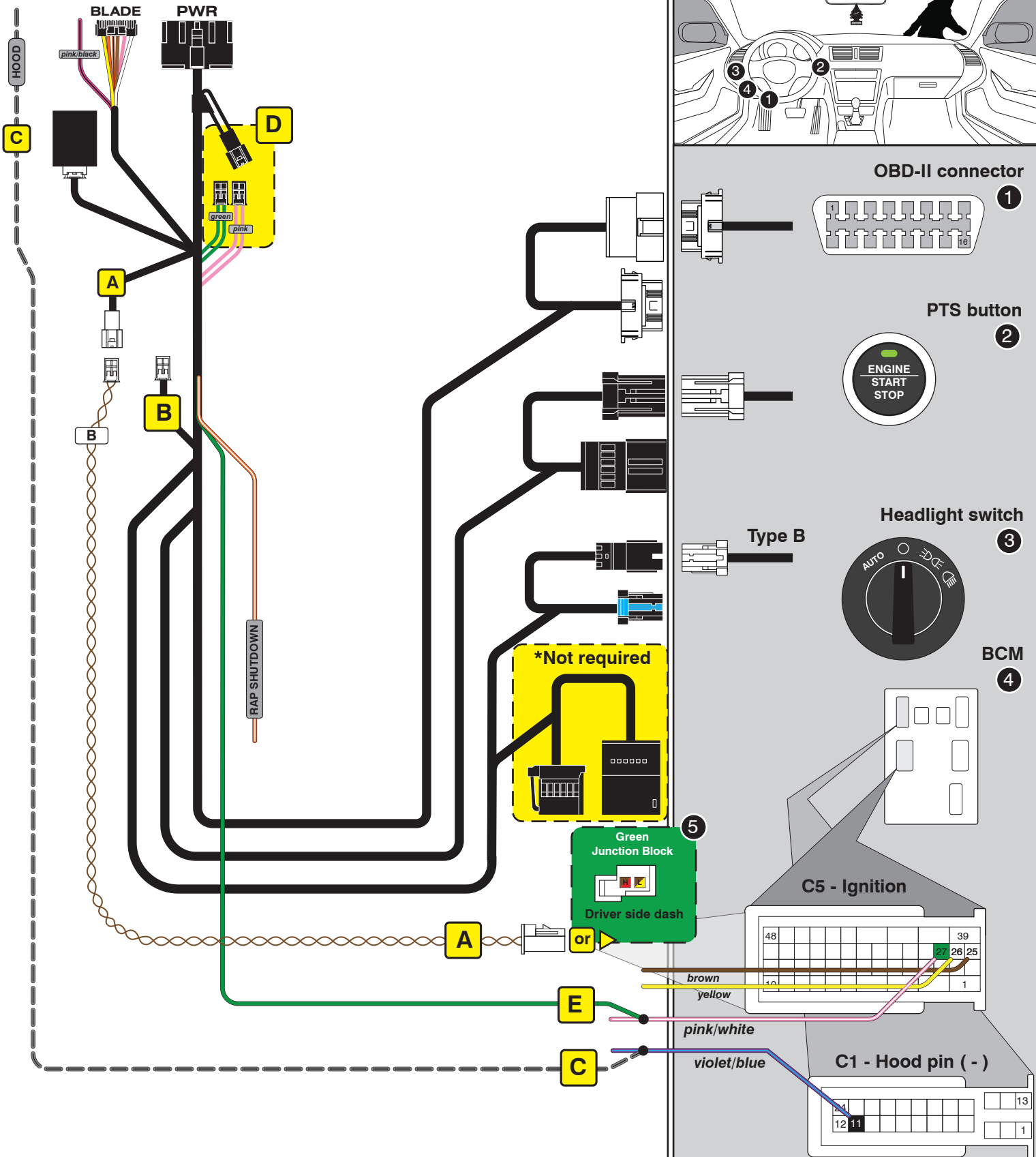
**CM-900S/900AS**

**CM900AS/900S Jumper**

**START**  
**ACC**  
**IGN1**



| FEATURE COVERAGE |                 |           |             |               |                  |  |  |  |  |  |             |              |              |                |             |  |  |                 |                |
|------------------|-----------------|-----------|-------------|---------------|------------------|--|--|--|--|--|-------------|--------------|--------------|----------------|-------------|--|--|-----------------|----------------|
| IMMOBILIZER DATA | PRIORITY UNLOCK | DOOR LOCK | DOOR UNLOCK | ARM OEM ALARM | DISARM OEM ALARM |  |  |  |  |  | DOOR STATUS | RAP SHUTDOWN | BRAKE STATUS | E-BRAKE STATUS | TACH OUTPUT |  |  | SECURE TAKEOVER | PARKING LIGHTS |

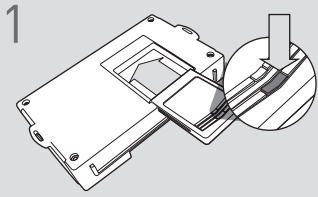


**Códigos de error de programación de LED**

El LED del módulo parpadea en ROJO durante la programación

- 1x - Muestra
- 2x - Muestra
- 3x - Muestra
- 4x - Muestra
- 5x - Muestra
- 6x - Muestra
- 7x - Muestra

## CARTRIDGE INSTALLATION

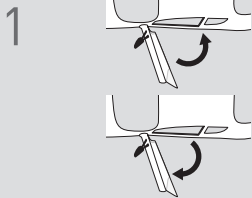


1 Slide cartridge into unit. Notice button under LED.

2

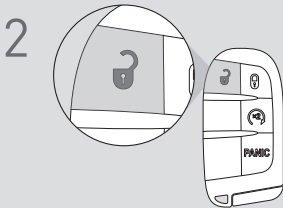
Ready for Module Programming Procedure.

## MODULE PROGRAMMING PROCEDURE - WITH KLON - 1 OF 2



1 Close driver door.

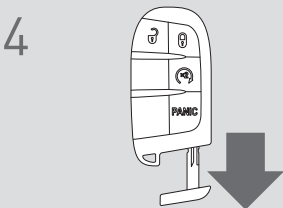
Re-open driver door to wake up data bus.



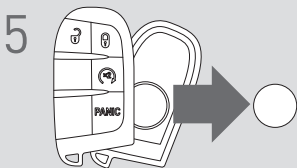
2 Press UNLOCK on keyfob 1.



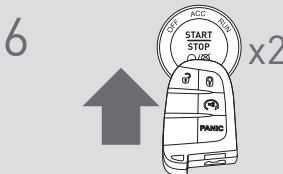
3 Wait, LED will flash BLUE once [1x].



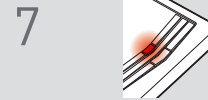
4 Remove valet key from keyfob 1.



5 Remove batteries from keyfob 1.



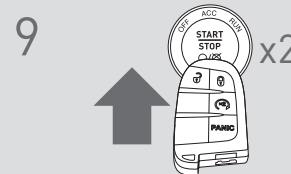
6 Push start button twice [2x] with keyfob 1 to ON position. (No battery)



7 Wait, LED will turn solid RED.



8 Push start button once [1x] to OFF position.



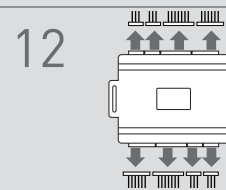
9 Push start button twice [2x] with keyfob 1 to ON position. (No battery)



10 Wait, if LED flashes BLUE rapidly, proceed to step 11. If LED turns solid RED, repeat steps 8 to 10.



11 Push start button once [1x] to OFF position.



12 Disconnect all connectors from remote starter except the power connector.

13

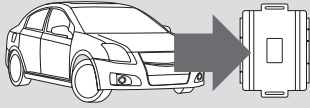
Disconnect the power connector.



**IMPORTANT: READ NEXT PAGE !**

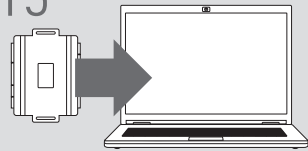
## MODULE PROGRAMMING PROCEDURE - WITH KLON - 2 OF 2

14



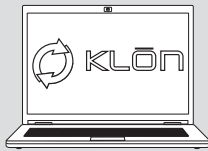
Remove remote starter from vehicle.

15



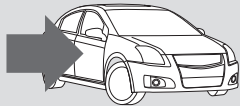
Connect remote starter to computer.

16



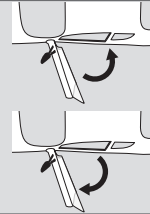
Proceed with extended programming.

17



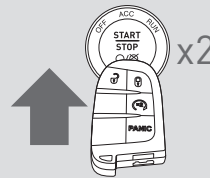
Connect remote starter to vehicle.

18



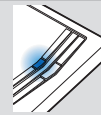
Close driver door.

19



Push start button twice [2x] with keyfob 1 to ON position. (No battery)

20



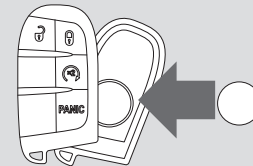
Wait, LED will turn solid BLUE for 2 seconds.

21



Push start button once [1x] to OFF position. Module Programming Procedure completed.

22



Insert battery in keyfob 1.

## WARNING: READ BEFORE REMOTE STARTING THE VEHICLE

### IMPORTANT

- I All OEM keyfobs must be at least 10 feet away from the vehicle. All vehicle doors must be closed and locked prior to remote start sequence. Failure to comply will result in remote starter malfunction.

## TAKE OVER PROCEDURE - TO THE VEHICLE OWNER

### NOTE

- I All vehicle doors must be closed and locked prior to remote start sequence.



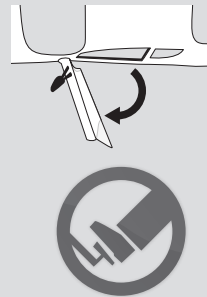
TIME RESTRICTION COMING UP !

1



Press UNLOCK on after-market remote.

2



### TIME RESTRICTION

Within 45 SECONDS from previous step:

Open vehicle door.  
Enter vehicle.  
Close vehicle door.

Press and release BRAKE pedal.

3

Take over procedure completed.



Failure to follow procedure within time restriction will result in vehicle engine shutdown.