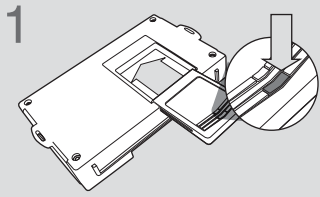






## CARTRIDGE INSTALLATION

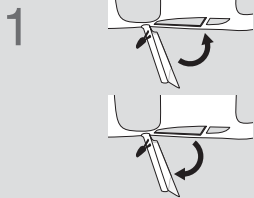


**1** Slide cartridge into unit. Notice button under LED.

**2**

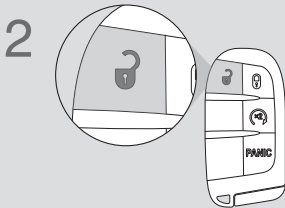
Ready for Module Programming Procedure.

## MODULE PROGRAMMING PROCEDURE - WITH KLON - 1 OF 2



**1** Close driver door.

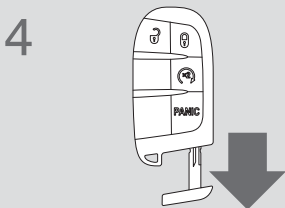
Re-open driver door to wake up data bus.



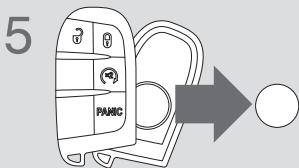
**2** Press UNLOCK on keyfob 1.



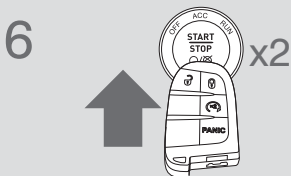
**3** Wait, LED will flash BLUE once [1x].



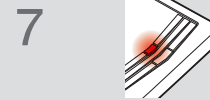
**4** Remove valet key from keyfob 1.



**5** Remove batteries from keyfob 1.



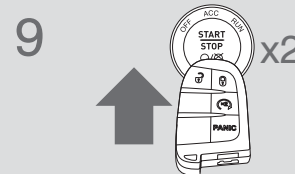
**6** Push start button twice [2x] with keyfob 1 to ON position. (No battery)



**7** Wait, LED will turn solid RED.



**8** Push start button once [1x] to OFF position.



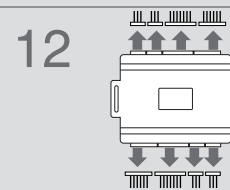
**9** Push start button twice [2x] with keyfob 1 to ON position. (No battery)



**10** Wait, if LED flashes BLUE rapidly, proceed to step 11. If LED turns solid RED, repeat steps 8 to 10.



**11** Push start button once [1x] to OFF position.



**12** Disconnect all connectors from remote starter except the power connector.

**13**

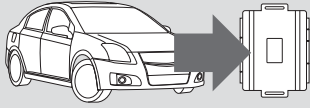
Disconnect the power connector.



**IMPORTANT: READ NEXT PAGE !**

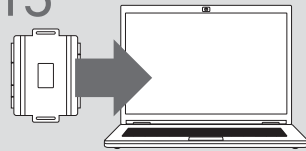
## MODULE PROGRAMMING PROCEDURE - WITH KLON - 2 OF 2

14



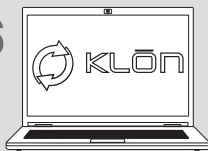
Remove remote starter from vehicle.

15



Connect remote starter to computer.

16



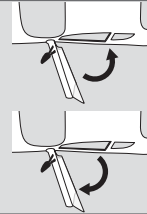
Proceed with extended programming.

17



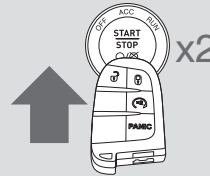
Connect remote starter to vehicle.

18



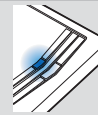
Close driver door.

19



Re-open driver door to wake up data bus.  
Push start button twice [2x] with keyfob 1 to ON position. (No battery)

20



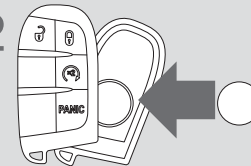
Wait, LED will turn solid BLUE for 2 seconds.

21



Push start button once [1x] to OFF position.  
Module Programming Procedure completed.

22



Insert battery in keyfob 1.

## WARNING: READ BEFORE REMOTE STARTING THE VEHICLE

### IMPORTANT

- I All OEM keyfobs must be at least 10 feet away from the vehicle. All vehicle doors must be closed and locked prior to remote start sequence. Failure to comply will result in remote starter malfunction.

## TAKE OVER PROCEDURE - TO THE VEHICLE OWNER

### NOTE

- I All vehicle doors must be closed and locked prior to remote start sequence.



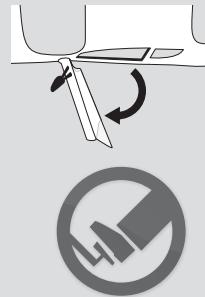
**TIME RESTRICTION COMING UP !**

1



Press UNLOCK on after-market remote.

2



### TIME RESTRICTION

Within 45 SECONDS from previous step:

Open vehicle door.  
Enter vehicle.  
Close vehicle door.

Press and release BRAKE pedal.

3

Take over procedure completed.



Failure to follow procedure within time restriction will result in vehicle engine shutdown.