

# FTI-CDP1: Vehicle Coverage and Preparation Notes

Make	Model	Year	Install	CAN	Lights	IGN	Hood	I/O Changes
<b>DL-CH7</b> Dodge	Challenger	2015-17	Type 1	OBD-II	Park / Auto Type A	BCM	BCM	Green White/Blue

**Firmware:** Covered vehicles use **BLADE-AL(DL)-CH7**, confirm application, flash module, and update the controller firmware before beginning the installation.

**CAN:** **Type 1** vehicles use CAN connections in harness at OBD-II, the included CAN extension is not required for this install type.

**Lighting:** **Type A** parking lights use the 6-pin connector, please ensure that the unused 10-pin connector is properly secured for safety.

**Ignition:** Common ignition provisions are listed in the BLADE diagram, ignition is also available at the vehicle BCM (connector C5/E, **pink/white**, pin #27).

**Hood:** Hood status wire is available at the vehicle BCM, connector C1, pin #11 (**violet/blue**).

## FTI-CDP1 - Installation and Configuration Notes

- A** Required CAN connections.
- B** Not Required.
- C** Hood pin connection.
- D** Ignition jumper, NO CONNECTION required.
- E** Ignition connection.

•FT-DAS Required for manual transmission.  
•BOTH Red & Red/White MUST be connected with high current application.

**Jumper Setting**

Parking Light	<input type="checkbox"/>	<input type="checkbox"/>	(+)Door Trigger In	<input type="checkbox"/>
Accessory	<input type="checkbox"/>	<input type="checkbox"/>	(-)Door Trigger In	<input type="checkbox"/>
Ignition (Default)	<input type="checkbox"/>	<input type="checkbox"/>		<input type="checkbox"/>
Trunk	<input type="checkbox"/>	<input type="checkbox"/>	Starter	<input type="checkbox"/>
Starter	<input type="checkbox"/>	<input type="checkbox"/>	Ignition	<input type="checkbox"/>
Parking Light (Default)	<input type="checkbox"/>	<input type="checkbox"/>	Accessory (Default)	<input type="checkbox"/>

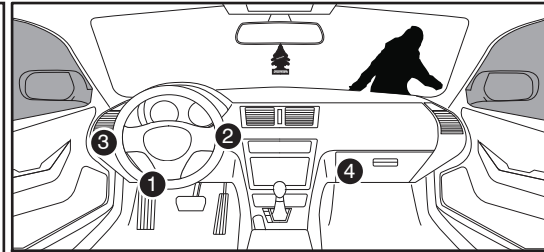
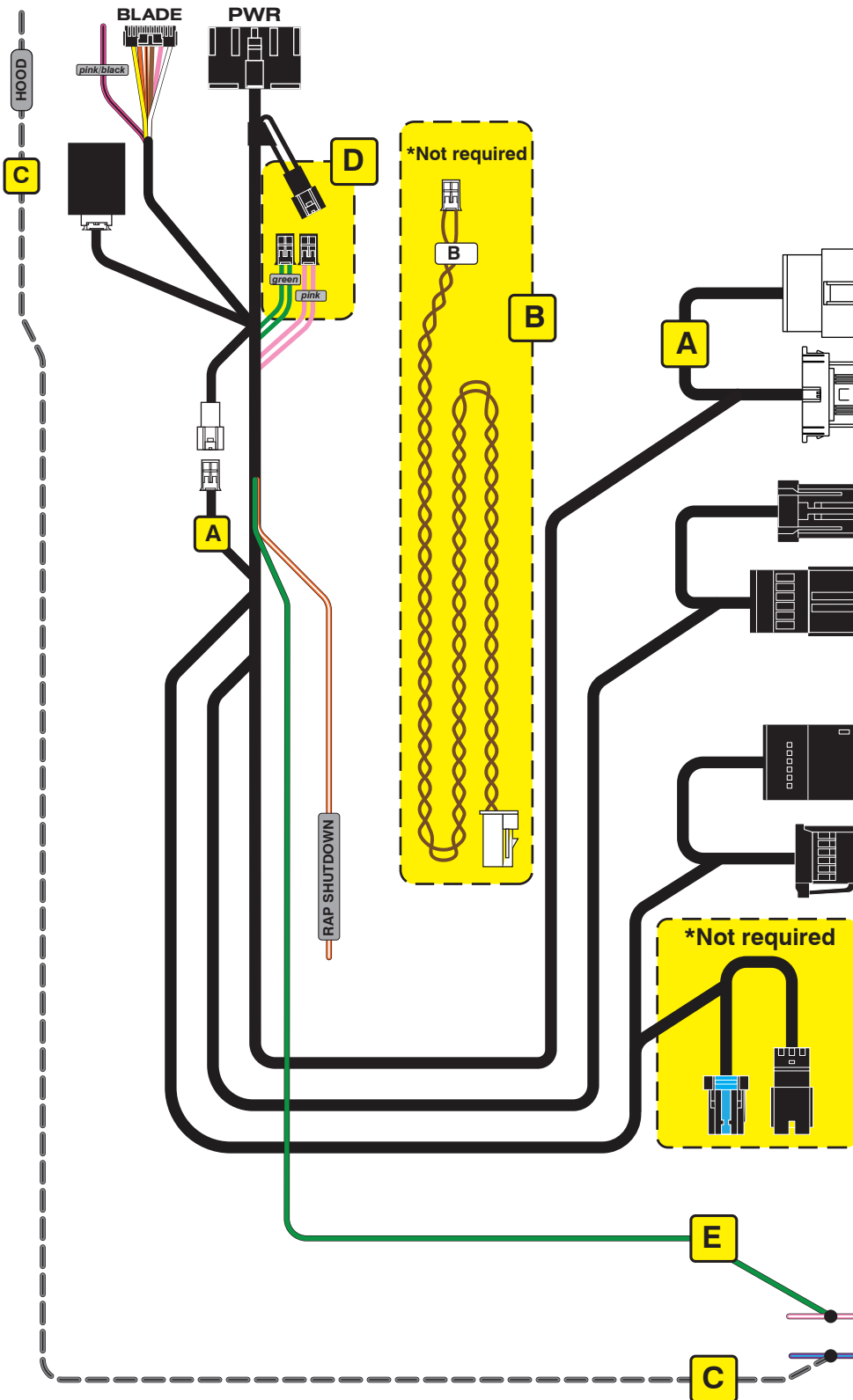
**CM7000/7200** Cut loop for A/T

**CM-900S/900AS**

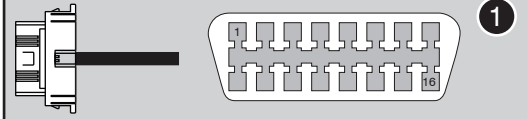
**CM900AS/900S Jumper**



FEATURE COVERAGE	
IMMOBILIZER DATA	<input type="checkbox"/>
PRIORITY UNLOCK	<input type="checkbox"/>
DOOR LOCK	<input type="checkbox"/>
DOOR UNLOCK	<input type="checkbox"/>
ARM OEM ALARM	<input type="checkbox"/>
DISARM OEM ALARM	<input type="checkbox"/>
TRUNK/HATCH RELEASE	<input type="checkbox"/>
DOOR STATUS	<input type="checkbox"/>
TRUNK STATUS	<input type="checkbox"/>
RAP SHUTDOWN	<input type="checkbox"/>
BRAKE STATUS	<input type="checkbox"/>
E-BRAKE STATUS	<input type="checkbox"/>
TACH OUTPUT	<input type="checkbox"/>
SECURE TAKEOVER	<input type="checkbox"/>
PARKING LIGHTS	<input type="checkbox"/>



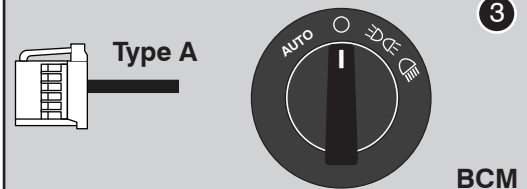
**OBD-II connector**



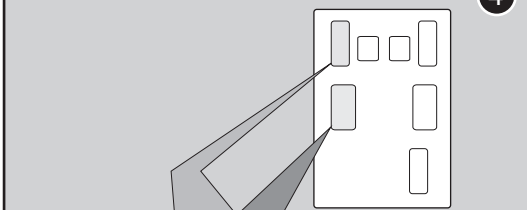
**PTS button**



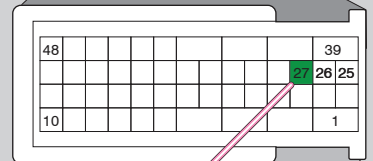
**Headlight switch**



**BCM**



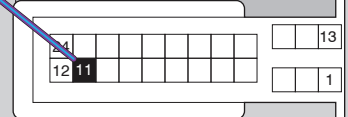
**C5 - Ignition**



*pink/white*

*violet/blue*

**C1 - Hood pin (-)**

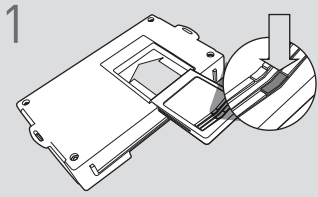


**LED Programming Error Codes**

Module LED flashing RED during programming

- 1x - CAN Error, check CAN wiring and voltages
- 2x - Key code not learned, confirm unlock sent, check CAN
- 3x - No PTS signal, check button connection
- 4x - No immobilizer data, check wiring
- 4x - No immobilizer, confirm only one key in vehicle
- 5x - No ignition, check wiring
- 6x - VIN error, check CAN wiring, confirm vehicle application
- 7x - PTS signal error, check button connection
- 8x - No PTS signal, check button connection

## CARTRIDGE INSTALLATION

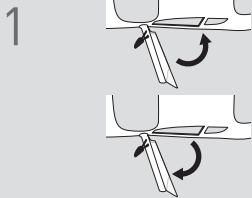


1 Slide cartridge into unit. Notice button under LED.

2

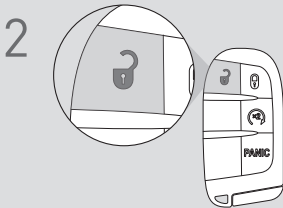
Ready for Module Programming Procedure.

## MODULE PROGRAMMING PROCEDURE - WITH KLON - 1 OF 2



1 Close driver door.

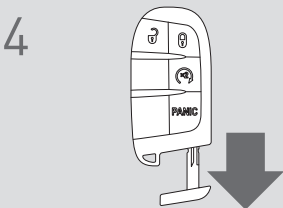
Re-open driver door to wake up data bus.



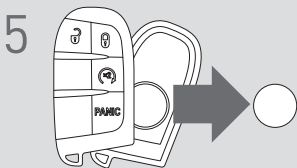
2 Press UNLOCK on keyfob 1.



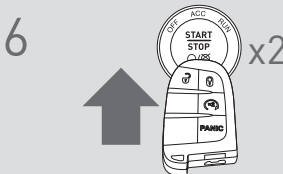
3 Wait, LED will flash BLUE once [1x].



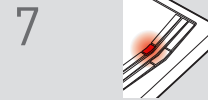
4 Remove valet key from keyfob 1.



5 Remove batteries from keyfob 1.



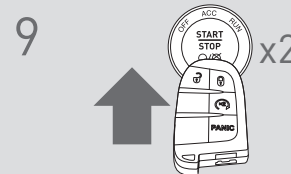
6 Push start button twice [2x] with keyfob 1 to ON position. (No battery)



7 Wait, LED will turn solid RED.



8 Push start button once [1x] to OFF position.



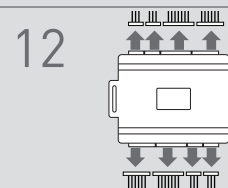
9 Push start button twice [2x] with keyfob 1 to ON position. (No battery)



10 Wait, if LED flashes BLUE rapidly, proceed to step 11. If LED turns solid RED, repeat steps 8 to 10.



11 Push start button once [1x] to OFF position.



12 Disconnect all connectors from remote starter except the power connector.

13

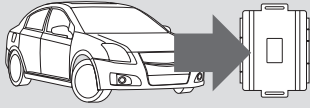
Disconnect the power connector.



**IMPORTANT: READ NEXT PAGE !**

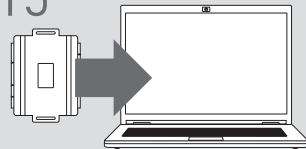
## MODULE PROGRAMMING PROCEDURE - WITH KLON - 2 OF 2

14



Remove remote starter from vehicle.

15



Connect remote starter to computer.

16



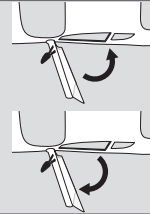
Proceed with extended programming.

17



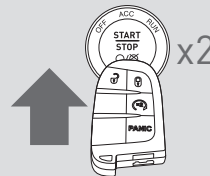
Connect remote starter to vehicle.

18



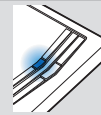
Close driver door.

19



Push start button twice [2x] with keyfob 1 to ON position. (No battery)

20



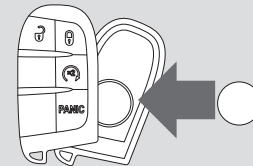
Wait, LED will turn solid BLUE for 2 seconds.

21



Push start button once [1x] to OFF position.  
Module Programming Procedure completed.

22



Insert battery in keyfob 1.

## WARNING: READ BEFORE REMOTE STARTING THE VEHICLE

### IMPORTANT

- I All OEM keyfobs must be at least 10 feet away from the vehicle. All vehicle doors must be closed and locked prior to remote start sequence. Failure to comply will result in remote starter malfunction.

## TAKE OVER PROCEDURE - TO THE VEHICLE OWNER

### NOTE

- I All vehicle doors must be closed and locked prior to remote start sequence.



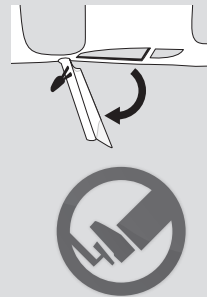
TIME RESTRICTION COMING UP !

1



Press UNLOCK on after-market remote.

2



**TIME RESTRICTION**  
Within 45 SECONDS from previous step:

Open vehicle door.  
Enter vehicle.  
Close vehicle door.

Press and release BRAKE pedal.

3

Take over procedure completed.



Failure to follow procedure within time restriction will result in vehicle engine shutdown.