

FTI-CDP1: Vehicle Coverage and Preparation Notes

Make	Model	Year	Install	CAN	Lights	IGN	Hood	I/O Changes
DL-CH7 Chrysler	300 PTS	2011-17	Type 1	OBD-II	Park / Auto Type A	BCM	BCM	Green White/Blue

Firmware: Covered vehicles use **BLADE-AL(DL-CH7)**, confirm application, flash module, and update the controller firmware before beginning the installation.

CAN: **Type 1** vehicles use CAN connections in harness at OBD-II, the included CAN extension is not required for this install type.

Lighting: **Type A** parking lights use the 6-pin connector, please ensure that the unused 10-pin connector is properly secured for safety.

Ignition: Common ignition provisions are listed in the BLADE diagram, ignition is also available at the vehicle BCM (connector C5/E, **pink/white**, pin #27).

Hood: Hood status wire is available at the vehicle BCM, connector C1, pin #11 (**violet/blue**).

FTI-CDP1 - Installation and Configuration Notes

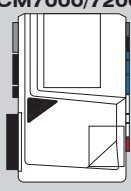
- A** Required CAN connections.
- B** Not Required.
- C** Hood pin connection.
- D** Ignition jumper, NO CONNECTION required.
- E** Ignition connection.

- FT-DAS Required for manual transmission.
- BOTH Red & Red/White MUST be connected with high current application.

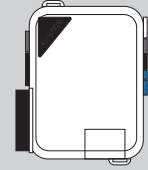
Jumper Setting

Parking Light	Accessory	Ignition (Default)	(+)Door Trigger In (Default)	(-)Door Trigger In (Default)
Trunk	Starter	Parking Light (Default)	Starter	Ignition
			Accessory (Default)	


CM7000/7200 Cut loop for A/T



CM-900S/900AS



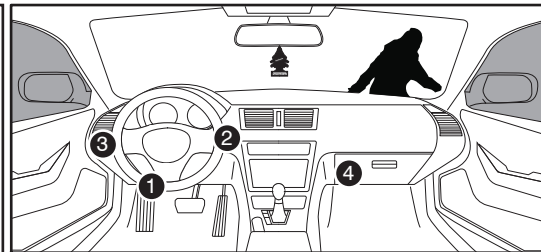
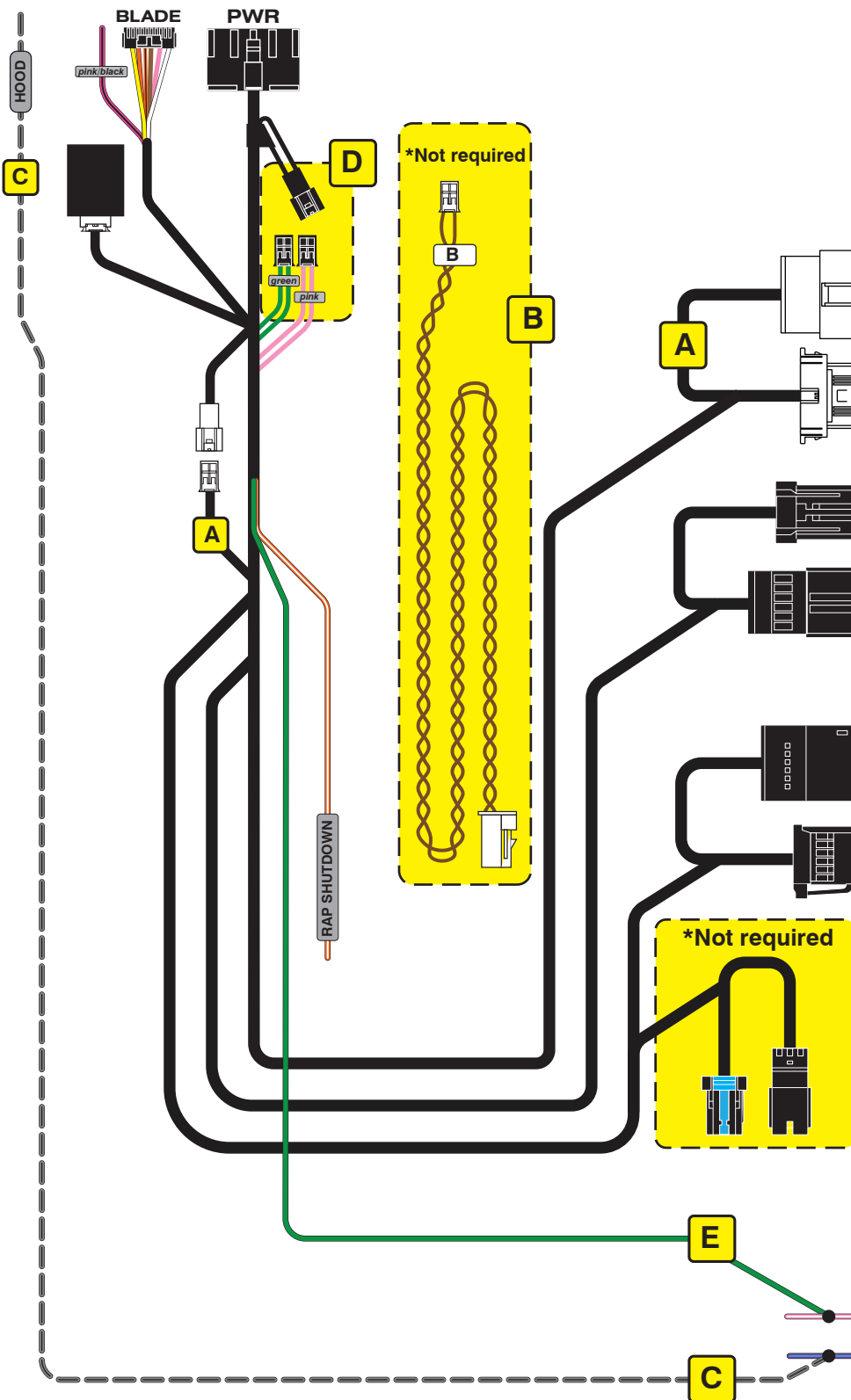
CM900AS/900S Jumper



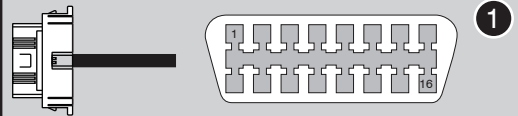
START
ACC
IGN1



FEATURE COVERAGE	
IMMOBILIZER DATA	○
PRIORITY UNLOCK	○
DOOR LOCK	○
DOOR UNLOCK	○
ARM OEM ALARM	○
DISARM OEM ALARM	○
TRUNK/HATCH RELEASE	○
DOOR STATUS	○
TRUNK STATUS	○
RAP SHUTDOWN	○
BRAKE STATUS	○
E-BRAKE STATUS	○
TACH OUTPUT	○
SECURE TAKEOVER	○
PARKING LIGHTS	○



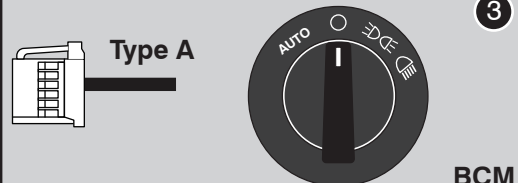
OBD-II connector **1**



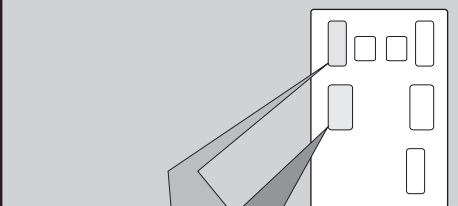
PTS button **2**



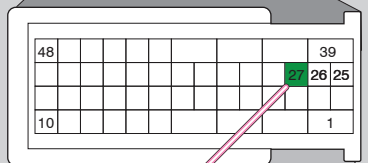
Headlight switch **3**



BCM **4**



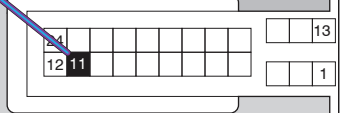
C5 - Ignition



pink/white

violet/blue

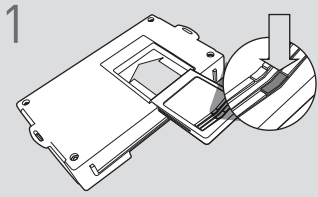
C1 - Hood pin (-)



LED Programming Error Codes

- Module LED flashing RED during programming
- 1x - CAN Error, check CAN wiring and voltages
 - 2x - Key code not learned, confirm unlock sent, check CAN
 - 3x - No PTS signal, check button connection
 - 4x - No immobilizer data, check wiring
 - 4x - No immobilizer, confirm only one key in vehicle
 - 5x - No ignition, check wiring
 - 6x - VIN error, check CAN wiring, confirm vehicle application
 - 7x - PTS signal error, check button connection
 - 8x - No PTS signal, check button connection

CARTRIDGE INSTALLATION

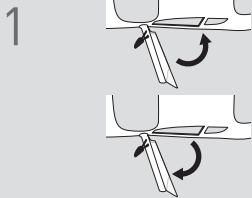


1 Slide cartridge into unit. Notice button under LED.

2

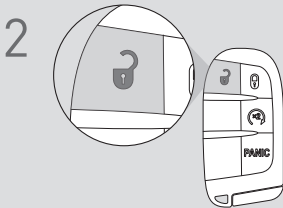
Ready for Module Programming Procedure.

MODULE PROGRAMMING PROCEDURE - WITH KLON - 1 OF 2



1 Close driver door.

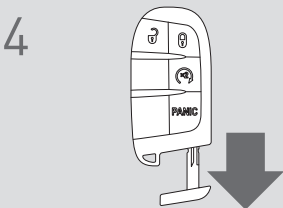
Re-open driver door to wake up data bus.



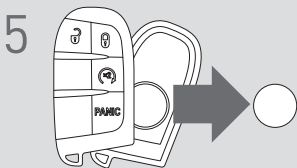
2 Press UNLOCK on keyfob 1.



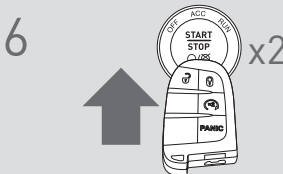
3 Wait, LED will flash BLUE once [1x].



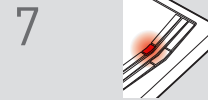
4 Remove valet key from keyfob 1.



5 Remove batteries from keyfob 1.



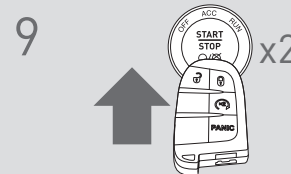
6 Push start button twice [2x] with keyfob 1 to ON position. (No battery)



7 Wait, LED will turn solid RED.



8 Push start button once [1x] to OFF position.



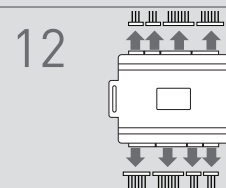
9 Push start button twice [2x] with keyfob 1 to ON position. (No battery)



10 Wait, if LED flashes BLUE rapidly, proceed to step 11. If LED turns solid RED, repeat steps 8 to 10.



11 Push start button once [1x] to OFF position.



12 Disconnect all connectors from remote starter except the power connector.

13

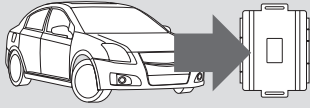
Disconnect the power connector.



IMPORTANT: READ NEXT PAGE !

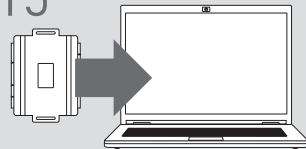
MODULE PROGRAMMING PROCEDURE - WITH KLON - 2 OF 2

14



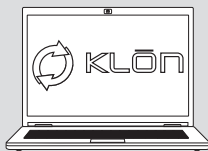
Remove remote starter from vehicle.

15



Connect remote starter to computer.

16



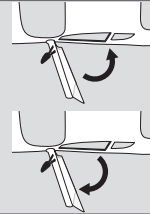
Proceed with extended programming.

17



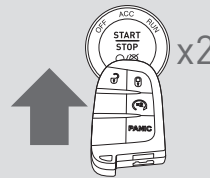
Connect remote starter to vehicle.

18



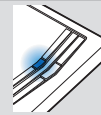
Close driver door.

19



Push start button twice [2x] with keyfob 1 to ON position. (No battery)

20



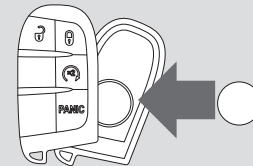
Wait, LED will turn solid BLUE for 2 seconds.

21



Push start button once [1x] to OFF position. Module Programming Procedure completed.

22



Insert battery in keyfob 1.

WARNING: READ BEFORE REMOTE STARTING THE VEHICLE

IMPORTANT

- I All OEM keyfobs must be at least 10 feet away from the vehicle. All vehicle doors must be closed and locked prior to remote start sequence. Failure to comply will result in remote starter malfunction.

TAKE OVER PROCEDURE - TO THE VEHICLE OWNER

NOTE

- I All vehicle doors must be closed and locked prior to remote start sequence.



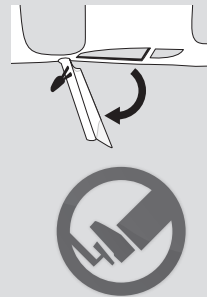
TIME RESTRICTION COMING UP !

1



Press UNLOCK on after-market remote.

2



TIME RESTRICTION
Within 45 SECONDS from previous step:

Open vehicle door.
Enter vehicle.
Close vehicle door.

Press and release BRAKE pedal.

3

Take over procedure completed.



Failure to follow procedure within time restriction will result in vehicle engine shutdown.