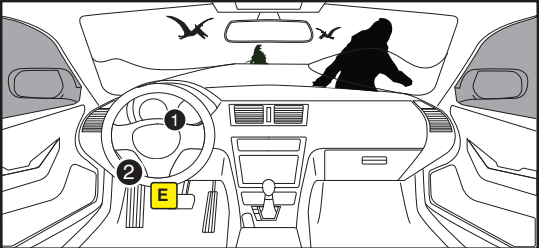


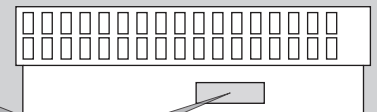
Starter wire not currently included. It will be included in future product revisions, but for kits without the wire, remove wire from harness included with the controller.



Steering Lock Connector



Main Body ECU



LED Programming Error Codes

- Module LED flashing RED during programming
- 1x - No CAN detected, check connections
- 2x - VIN not read, check connections
- 3x - VIN unknown, force platform
- 4x - No IMMO
- 5x - OEM remote starter detected, remove
- 6x - Key platform detected, check connections
- 7x - No RX detected, check connections
- 8x - No TX detected, check connections

TAKEOVER NOT SUPPORTED: THE VEHICLE WILL SHUT DOWN UPON OPENING DRIVER'S DOOR

CARTRIDGE INSTALLATION



1 Slide cartridge into unit. Notice button under LED.

2

Ready for Module Programming Procedure.

MODULE PROGRAMMING PROCEDURE

NOTE

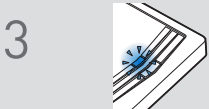
Between each step, LED will turn solid RED, this is the default standby mode.



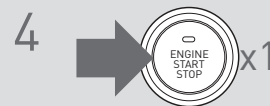
1 Push start button twice [2x] to ON position.



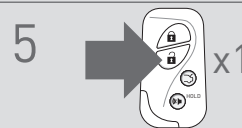
2 LED will turn solid RED.



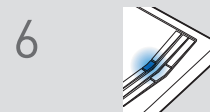
3 Within 5 seconds, LED will flash BLUE rapidly.



4 Push start button once [1x] to OFF position.



5 Press unlock button once [1x] on OEM keyfob.



6 Wait, LED will turn solid BLUE for 2 seconds.

7

Module Programming Procedure completed.

TAKEOVER NOT AVAILABLE