

Make	Model	Year	Install	ECU	Lights	Locks	Trunk/Hatch	I/O Changes
DL-TL6 Toyota	Corolla PTS AT	2014-16	Type 3	4/BFB	Park / Auto Yes	No	No	Green White/Blue X

This installation requires **BLADE-AL(DL)-TL6** firmware, flash module and update controller before beginning the installation.

**Install Type 3:** Main Body ECU, driver side dash, below the fuse box, door lock and trunk release connections not required.

**CAN:** Vehicle CAN data is gathered through the 30-pin connection at the **Main Body ECU**, no other connections are required.

**Lights:** Parking light and auto-light control are handled using the pre-terminated **green/white** wire bundled with the **BLADE** connector. Remove the (-) pk light wire from the controller's **gray** I/O connector and replace it with the one specified, for status and diagnostic reporting.

**Locks:** This install does not require any additional connections to the vehicle door locks.

**The 6-pin lock connector is not required, do not connect to the controller's lock output port.**

**Idle Mode is not a supported feature of the FTI-TLP4 Harness:** The Idle Mode feature which allows the user to exit a running has been excluded from the FTI-TLP4 harness wiring. **If this feature is desired, please refer to the full BLADE installation diagram for the applicable wiring and make the required connection to the vehicle PTS button.**

## TAKEOVER NOT SUPPORTED: THE VEHICLE WILL SHUT DOWN UPON OPENING DRIVER'S DOOR

### FTI-TLP4: Installation and Configuration Notes

- A** REQUIRED CONNECTIONS
- B** REQUIRED CONNECTIONS
- C** NOT REQUIRED
- D** REQUIRED CONFIGURATION



FEATURE COVERAGE																												
IMMOBILIZER DATA	PTS CONTROL	ARM OEM ALARM	DISARM OEM ALARM	A/M CONTROL FROM OEM REMOTES	A/M RS CONTROL	FRMO OEM REMOTE	PRIORITY UNLOCK	DOOR LOCK	DOOR UNLOCK	TRUNK/HATCH RELEASE	TACH OUTPUT	BRAKE STATUS	E-BRAKE STATUS	DOOR STATUS	TRUNK STATUS	HOOD STATUS	PARKING LIGHTS	AUTO LIGHT CONTROL										

•FT-DAS Required for manual transmission.  
•BOTH Red & Red/White MUST be connected with high current application.

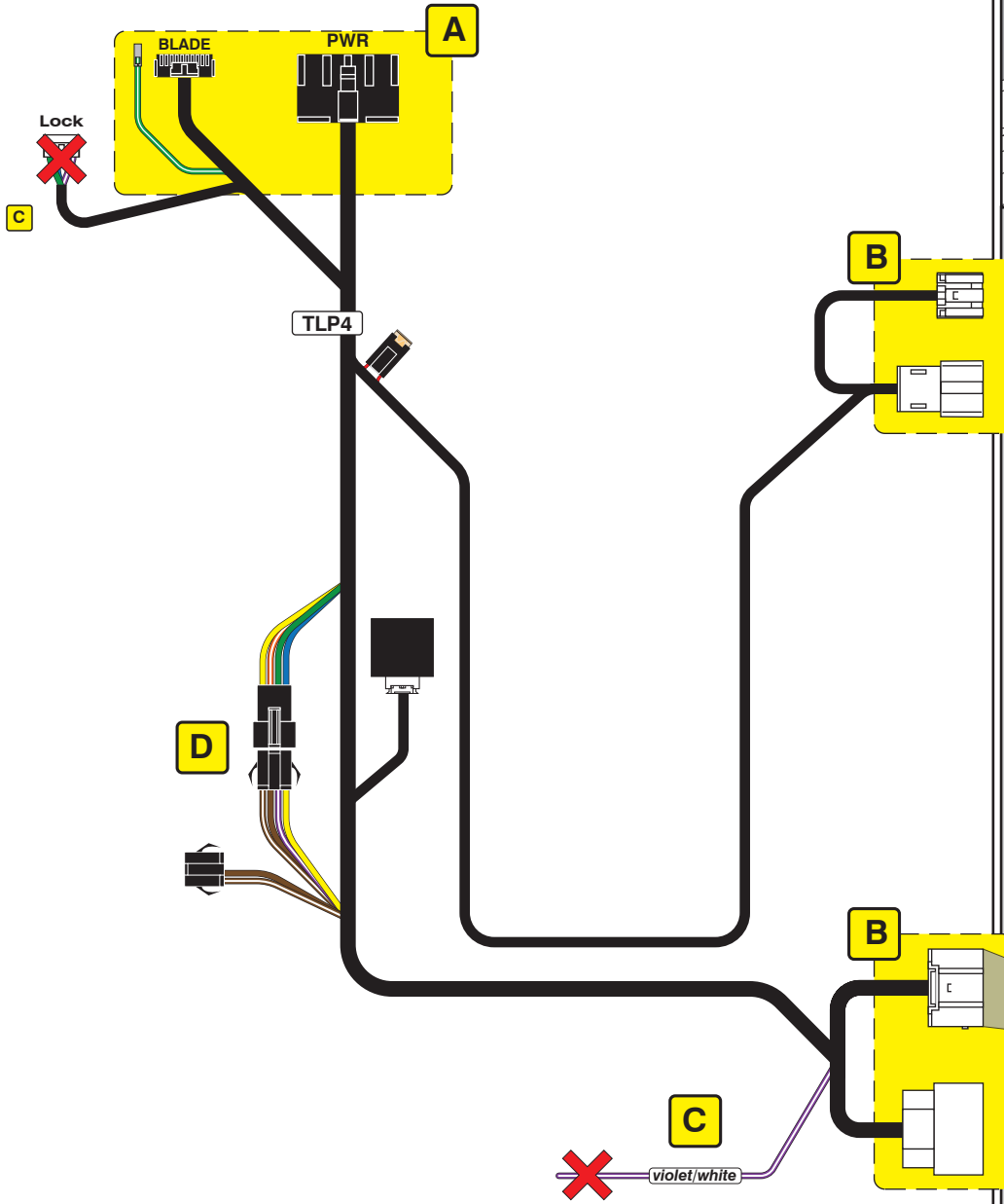
**Jumper Setting**

CM7000/7200 **Cut loop for A/T**

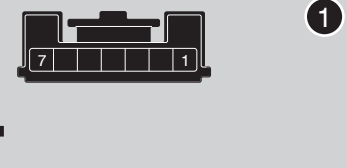
CM-900S/900AS

**CM900AS/900S Jumper**

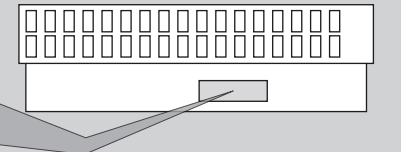
START  
ACC  
IGN1



Steering Lock Connector 1



Main Body ECU 2

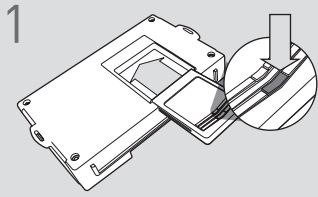


**LED Programming Error Codes**

- Module LED flashing RED during programming
- 1x - No CAN detected, check connections
  - 2x - VIN not read, check connections
  - 3x - VIN unknown, force platform
  - 4x - No IMMO
  - 5x - OEM remote starter detected, remove
  - 6x - Key platform detected, check connections
  - 7x - No RX detected, check connections
  - 8x - No TX detected, check connections

**TAKEOVER NOT SUPPORTED: THE VEHICLE WILL SHUT DOWN UPON OPENING DRIVER'S DOOR**

## CARTRIDGE INSTALLATION



1 Slide cartridge into unit. Notice button under LED.

2

Ready for Module Programming Procedure.

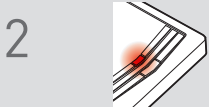
## MODULE PROGRAMMING PROCEDURE

### NOTE

Between each step, LED will turn solid RED, this is the default standby mode.



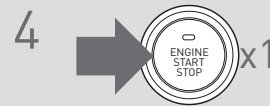
1 Push start button twice [2x] to ON position.



2 LED will turn solid RED.



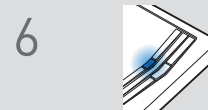
3 Within 5 seconds, LED will flash BLUE rapidly.



4 Push start button once [1x] to OFF position.



5 Press unlock button once [1x] on OEM keyfob.



6 Wait, LED will turn solid BLUE for 2 seconds.

7

Module Programming Procedure completed.

## TAKEOVER NOT AVAILABLE