

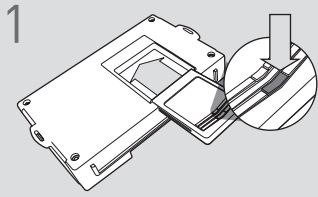
Códigos de error de programación de LED

El LED del módulo parpadea en ROJO durante la programación

- 1x - No se detecta CAN, verifique las conexiones
- 2x - VIN no leído, verifique las conexiones
- 3x - VIN desconocido, plataforma de fuerza
- 4x - Sin IMMO
- 5x - Arrancador remoto OEM detectado, quitar
- 6x - Plataforma clave detectada, verifique las conexiones
- 7x - No se detecta RX, verifique las conexiones
- 8x - No se detecta TX, verifique las conexiones

RECUPERACIÓN NO COMPATIBLE: EL VEHÍCULO SE APAGARÁ AL ABRIR LA PUERTA DEL CONDUCTOR.

CARTRIDGE INSTALLATION



1 Slide cartridge into unit. Notice button under LED.

2

Ready for Module Programming Procedure.

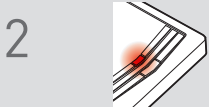
MODULE PROGRAMMING PROCEDURE

NOTE

Between each step, LED will turn solid RED, this is the default standby mode.



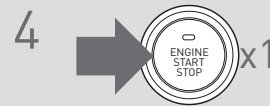
1 Push start button twice [2x] to ON position.



2 LED will turn solid RED.



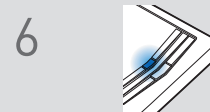
3 Within 5 seconds, LED will flash BLUE rapidly.



4 Push start button once [1x] to OFF position.



5 Press unlock button once [1x] on OEM keyfob.



6 Wait, LED will turn solid BLUE for 2 seconds.

7

Module Programming Procedure completed.

TAKEOVER NOT AVAILABLE