

FTI-TLP4: Vehicle Coverage and Preparation Notes

Make	Model	Year	Install	ECU	Lights	Locks	Trunk/Hatch	I/O Changes
DL-TL6 Toyota	Avalon PTS AT	2013-15	Type 3	3/DKP	Park / Auto Yes	No	No	Green White/Blue N/A

This installation requires **BLADE-AL(DL)-TL6** firmware, flash module and update controller before beginning the installation.

Install Type 3: Main Body ECU, driver side kick panel area, door lock and trunk release connections not required.

CAN: Vehicle CAN data is gathered through the 30-pin connection at the **Main Body ECU**, no other connections are required.

Lights: Parking light and auto-light control are handled using the pre-terminated **green/white** wire bundled with the **BLADE** connector. Remove the (-) pk light wire from the controller's **gray** I/O connector and replace it with the one specified, for status and diagnostic reporting.

Locks: This install does not require any additional connections to the vehicle door locks.
The 6-pin lock connector is not required, do not connect to the controller's lock output port.

Idle Mode is not a supported feature of the FTI-TLP4 Harness: The Idle Mode feature which allows the user to exit a running has been excluded from the FTI-TLP4 harness wiring. *If this feature is desired, please refer to the full BLADE installation diagram for the applicable wiring and make the required connection to the vehicle PTS button.*

TAKEOVER NOT SUPPORTED: THE VEHICLE WILL SHUT DOWN UPON OPENING DRIVER'S DOOR

FTI-TLP4: Installation and Configuration Notes

- A REQUIRED CONNECTIONS
- B REQUIRED CONNECTIONS
- C NOT REQUIRED
- D REQUIRED CONFIGURATION



FEATURE COVERAGE																										
IMMOBILIZER DATA	PTS CONTROL	ARM OEM ALARM	DISARM OEM ALARM	A/M CONTROL FROM OEM REMOTES	A/M RS CONTROL	FRMO OEM REMOTE	PRIORITY UNLOCK	DOOR LOCK	DOOR UNLOCK	TRUNK/HATCH RELEASE	TACH OUTPUT	BRAKE STATUS	E-BRAKE STATUS	DOOR STATUS	TRUNK STATUS	HOOD STATUS	PARKING LIGHTS	AUTOLIGHT CONTROL								

•FT-DAS Required for manual transmission.
•BOTH Red & Red/White MUST be connected with high current application.

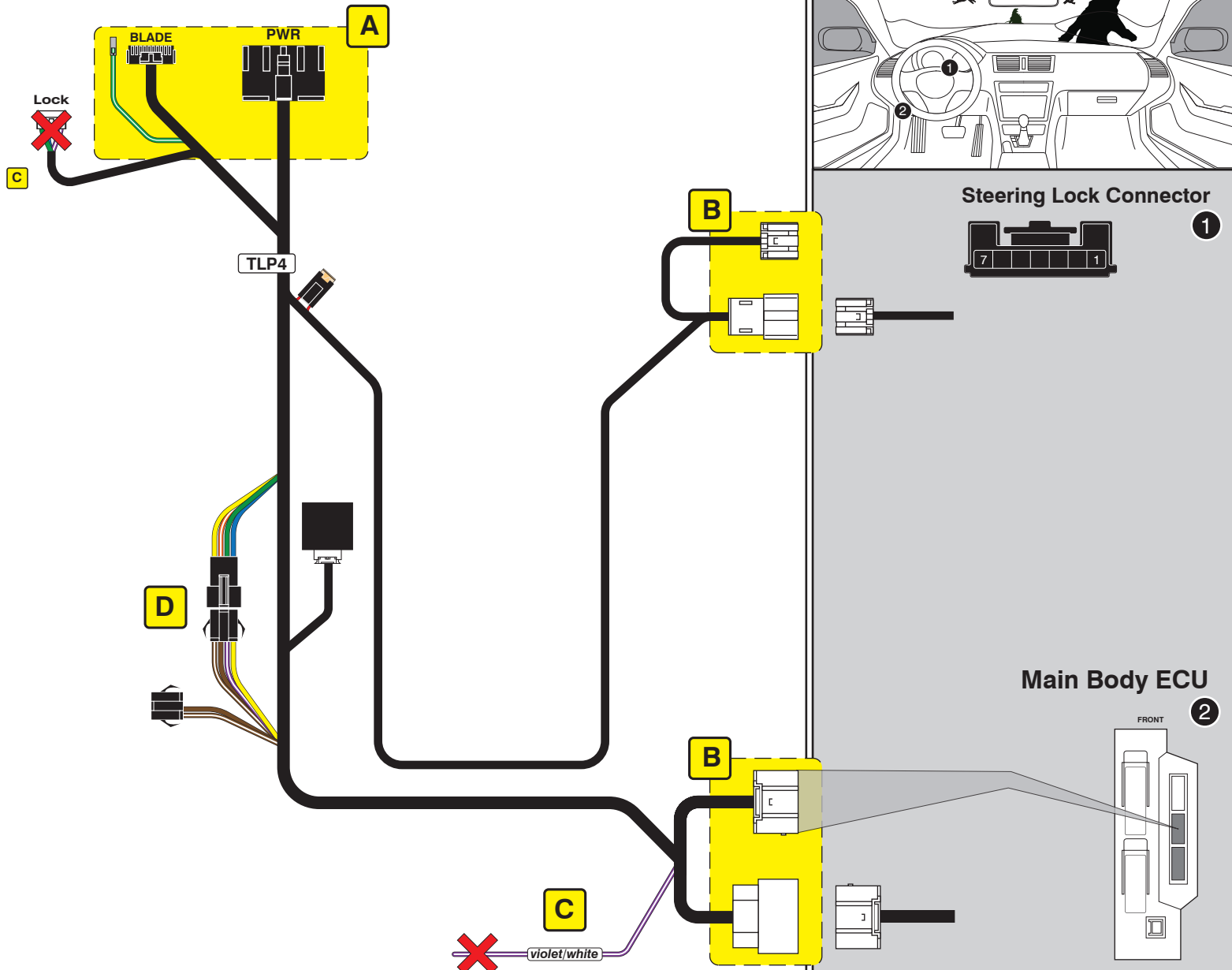
Jumper Setting

Parking Light	Accessory	Ignition (Default)	Trunk	Starter	Parking Light (Default)	(+)-Door Trigger In (Default)	(-)Door Trigger In (Default)	Starter Ignition	Accessory (Default)
---------------	-----------	--------------------	-------	---------	-------------------------	-------------------------------	------------------------------	------------------	---------------------

CM7000/7200 Cut loop for A/T

CM-900S/900AS

CM900AS/900S Jumper



TAKEOVER NOT SUPPORTED: THE VEHICLE WILL SHUT DOWN UPON OPENING DRIVER'S DOOR

LED Programming Error Codes

- Module LED flashing RED during programming
- 1x - No CAN detected, check connections
 - 2x - VIN not read, check connections
 - 3x - VIN unknown, force platform
 - 4x - No IMMO
 - 5x - OEM remote starter detected, remove
 - 6x - Key platform detected, check connections
 - 7x - No RX detected, check connections
 - 8x - No TX detected, check connections

CARTRIDGE INSTALLATION



1 Slide cartridge into unit. Notice button under LED.

2

Ready for Module Programming Procedure.

MODULE PROGRAMMING PROCEDURE

NOTE

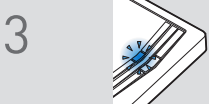
Between each step, LED will turn solid RED, this is the default standby mode.



1 Push start button twice [2x] to ON position.



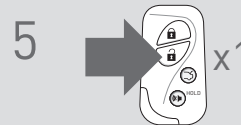
2 LED will turn solid RED.



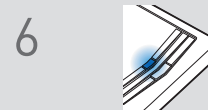
3 Within 5 seconds, LED will flash BLUE rapidly.



4 Push start button once [1x] to OFF position.



5 Press unlock button once [1x] on OEM keyfob.



6 Wait, LED will turn solid BLUE for 2 seconds.

7

Module Programming Procedure completed.

TAKEOVER NOT AVAILABLE